

SBI PO Mains 2016 English Question Paper

Direction (1-5): In each of the following questions a short passage is given with one of the lines in the passage missing and represented by a blank. Select the best out of the five answer choices given, to make the passage complete and coherent (coherent means logically complete and sound).

- Some people who have treated Bitcoin as the medium of exchange it's supposed to be have been hurt also, in two ways. Governments have stolen significant quantities of Bitcoin from e.g. Silk Road customers, and hackers have also stolen quite a bit. Bitcoin could fade away into irrelevance as better, stronger, sounder, more easily anonymized cryptocurrencies replace it. _____ the Holy Grail of Internet commerce in very cheap things — feasible and making borders economically superfluous.
 - Bitcoins serve several vital functions: Not just protecting its users from government and private thievery, but also making "micropayments"
 - Cryptocurrencies serve several vital functions: Not just protecting their users from government and private thievery, but also making "micropayments"
 - Cryptocurrencies serve several vital function: Not just protecting its users from government and private thievery, but also making "micropayments"
 - Cryptocurrencies serve several vital functions: Not just protect it's users from government and private thievery, but also make "micropayments"
 - Bitcoins serves several vital function: Not just protecting their users from government and private thievery, but also make "micropayments"
- The Bahá'í Faith is a religion founded by Bahá'u'lláh in nineteenth-century Persia. Members of the Bahá'í faith understand history as an evolving educational process for humankind, brought about by God's religious messengers known as "Manifestations of God." Bahá'u'lláh is seen as the most recent and pivotal. _____.

It is said that his mission was to establish a firm basis for unity throughout the world and inaugurate an age of peace and justice, which Bahá'is expect will inevitably arise.

- It is viewed the long-expected educator and teacher of all peoples, allegory foretold in the scriptures of Christianity, Islam, Hinduism, and Buddhism.
 - They are viewed as the long-expected educators and teachers of all peoples, allegedly foretold in the scriptures of Christianity, Islam, Hinduism, and Buddhism.
 - He is viewed as the long-expected educator and teacher of all people, allegory foretold in the scriptures of Christianity, Islam, Hinduism, and Buddhism.
 - He is viewed as the long-expected educator and teacher of all peoples, allegedly foretold in scriptures of Christianity, Islam, Hinduism, and Buddhism.
 - He is viewed as the long-expected educator and teacher of all people, barely foretold the scriptures of Christianity, Islam, Hinduism, and Buddhism.
- NASA announced that the Spitzer infrared space telescope had found a system of seven Earth-sized planets, three of which are in its star's habitable zone, the region around a star where liquid water can survive on the surface. The star is called TRAPPIST-1. It is a small red dwarf star 39 light-years from Earth. Initial observations of the system found three planets by their transits—that is, by observing the dimming they cause when they pass in front of their star. _____. They are not too close to the star, so liquid water won't boil away. They are not too far away, so liquid water will not permanently freeze.
 - Follow-up observations of TRAPPIST-1 with Spitzer found that the third planet is four separate planets.
 - Three of these planets—TRAPPIST-1e, TRAPPIST-1f, and TRAPPIST-1g—are within the just-right habitable zone.

- C. This could mean it have weather patterns totally unlike those on Earth, such as strong winds blowing from the day side to the night side, and extreme temperature changes.
- D. The masses are between 0.41 and 1.38 times that of Earth, which means that like Earth they are rocky bodies and not gas giants like Jupiter or Saturn.
- E. This could mean they have weather patterns totally unlike those on Earth, such as strong winds blowing from the day side to the night side, and extreme temperature changes.
4. Reduplication is a word-formation process in which meaning is expressed by repeating all or part of a word. The study of reduplication has generated a great deal of interest in terms of understanding a number of properties associated with the word-formation process. _____ . As for form, the term "reduplicant" has been widely used to refer to the repeated portion of a word, while "base" is used to refer to the portion of the word that provides the source material for repetition.
- A. As in morphology in general, two considerations that arisen in reduplication are related to form and base.
- B. As in morphology in general, two considerations that arises in reduplication are related to form and meaning.
- C. As with morphology in general, two considerations that arise in reduplication are related to form and meaning.
- D. As with morphology in general, two consideration that rises in reduplication are related to form and base.
- E. As in morphology in general, two consideration that arise in reduplication are relate to form and meaning.
5. African elephants in the wild have the shortest sleep period of any mammal, averaging only two hours a night, according to a recent study published in PLoS One on March 1, 2017. Previous elephant sleep studies that had been done on captive elephants had the problem that animals tend to sleep more in captivity than in the wild. _____. To get around these problems, the scientists implanted a

fitness tracker into the trunks of two female African elephants. The elephants were also given a collar that contained a gyroscope and a GPS. The new data about elephant sleep has raised questions for theories about why animals sleep.

- A. Those studies done on wild elephants had the problem that it is hard to observe elephants in the wild at night.
- B. The scientists found out that these sleepless periods seemed to happen when the elephants were disturbed, possibly by predators, poachers, or a bull elephant in musth, the time when male elephants seek to mate.
- C. The scientists found out that elephants seem to enter REM (rapid eye movement) sleep, the type of sleep associated with dreaming, only when lying down.
- D. The scientists found out that these sleepless periods seem to happen when the elephants were disturbed, possibly from predators, poachers, or a bull elephant in musth, the time when male elephants seek to mate.

A team of scientists from South Africa, were interested in the sleep habits of the African elephant because the elephant is the largest land mammal, it tends to be at the extreme end of any study of basic bodily functions, such as sleep.

Direction (6-10): Select the phrase/connector from the given three options which can be used to form a single sentence from the two sentences given below, implying the same meaning as expressed in the statement sentences. Pick out the option which when used to start a sentence combines both the above sentences in one.

6. The global investor's comfort levels with their markets will increase. The runway inflation in these economies abates with the fear of untamed.
- a) With the fear of untamed,
b) The runway inflation
c) As the fear of untamed,
A. a and b B. b and c
C. Only a D. Only b
E. Only c

7. The cabinet approved the proposed merger of State Bank of India and five subsidiaries. This will create the first Indian lender to rank among the world's top 50.
- Creating the first
 - The merger has brought about
 - The approval of
- A. Only a B. Only b
C. Only c D. Only b and c
E. None of the above
8. A combustible mixture of authoritarianism, unemployment and youth has given rise to disaffection with strongmen rulers in many countries. It has in turn spilled over into uprising.
- With many countries,
 - In many countries,
 - Following many countries,
- A. Only a B. Only b
C. Only c D. Both a and b
E. None of them
9. Over 12 million people signed a petition calling for the project to be halted. Alarms were triggered by the revelation of its harmful effects on the environment.
- The harmful effects
 - Signing the petition
 - Alarms triggered by
- A. Only a B. Only b
C. Only c D. Only a and c
E. None of the above
10. The United States is all set to enforce the border adjustment tax. The hope is that it would allow Washington to make a big, corporate tax cut across the border.
- Enforcement of border adjustment tax
 - Hoping
 - A big corporate tax cut
- A. Only a B. Only b
C. Only c D. Only b and c
E. None of the above

Direction (11-15): Five statements are given below, labelled A, B, C, D and E, among these, four statements are in logical order and form a coherent paragraph/ passage. From the given options, choose the option that does not fit into the theme of the passage.

11. A. With this form of demonetization, citizens are given enough time to trade in the old bills for the new,
B. In these scenarios, there is minimal economic and social disruption.
- C. When Lithuania left the litas and adopted the euro in 2015, its currency transition went smoothly,
D. as did Germany and France's adoption of the euro in cash form in 2002, and so on with all 19 countries that have joined the eurozone.
E. A minor country in the grand scheme of things in Europe became a test case for a strategy that could be likened to rolling a snowball uphill.
12. A. This takes us back to John Stuart Mill, the great nineteenth-century economist and philosopher, who believed that nobody can be a good economist if he or she is just an economist.
B. To be sure, most academic disciplines have become highly specialized since Mill's day; and, since the collapse of theology,
C. no field of study has aimed to understand the human condition as a whole.
D. The life insurance industry has been destroyed by high and uncertain inflation as well.
E. But no branch of human inquiry has cut itself off from the whole - and from the other social sciences - more than economics.
13. A. The global cooperation that has emerged lately is certainly welcome.
B. The ocean has suffered decades of abuse and neglect.
C. It has been treated as a free-for-all garbage bin and race-to-the-bottom buffet.
D. We have financed its destruction, with no regard for the consequences.
E. But those consequences have become impossible to ignore.
14. A. Untouchable have to kill or dispose of dead cattle or working with their hides for a living.
B. They pursued activities that brought the participant into contact with emissions of the human body, such as faeces, urine, sweat, and spittle
C. They have to eat the flesh of cattle or of domestic pigs and have to live outside the village.
D. They were not allowed to enter the temples or touch wells, river or ponds.

- E. But now the Untouchability (Offences) Act (1955) provides penalties for preventing anyone from enjoying a wide variety of religious, occupational, and social rights on the grounds that he or she is from a Scheduled Caste or Scheduled Tribe.
15. A. Central electricity Regulatory Commission (CERC) allowed Energy savings certificates to be traded on power exchange platform
- B. The pricing of the certificate would be as per the energy conservation rules.
- C. These cover 65% of the electricity consumed by industries.
- D. The rules prescribe that on the certificate shall be equal to the energy consumed in terms of one metric tonne of oil equivalent.
- E. The market price of the certificate shall be as discovered through the process of bidding at the respective power exchange

Direction (16-20): Read the following passage carefully and answers the questions given below it. Certain words are given in bold to help you locate them while answering some of the questions.

Academics have debated the meaning of "knowledge" since the word was invented, but let's not get into that here. A dictionary definition is "the facts, feelings or experiences known by a person or group of people" (Collins English Dictionary). Knowledge is derived from information but it is richer and more meaningful than information. It includes familiarity, awareness and understanding gained through experience or study, and results from making comparisons, identifying consequences, and making connections. Some experts include wisdom and insight in their definitions of knowledge. In organizational terms, knowledge is generally thought of as being "know how", or "applied action". The last point is an important one. Today's organizations contain a vast amount of knowledge and the NHS is certainly no exception. However, in applying knowledge management principles and practices in our organisation, knowledge is not our end, but the means for further action. What we

are trying to do is to use our knowledge to get better at doing what we do, i.e. health care and health care improvement.

Knowledge management is based on the idea that an organization's most valuable resource is the knowledge of its people. This is not a new idea – organizations have been managing "human resources" for years. What is new is the focus on knowledge. This focus is being driven by the accelerated rate of change in today's organizations and in society as a whole. Knowledge management recognizes that today nearly all jobs involve "knowledge work" and so all staff is "knowledge workers" to some degree or another – meaning that their job depends more on their knowledge than their manual skills. This means that creating, sharing and using knowledge are among the most important activities of nearly every person in every organisation. It is easy to see the importance of knowledge in the health sector. As clinicians, managers and other practitioners, we all rely on what we know to do our jobs effectively.

Do we know everything we need to know or are there gaps in our knowledge? Of course there are Medical advances are being made all the time so there is always new knowledge to be learned. Government policies are constantly evolving, as are management practices. The current modernization programme requires us to let go of what we knew and to learn and apply new knowledge. Changing doctor-patient relationships are requiring us to revisit our whole approach to the provision of health care. And of course, every new patient that comes through our door brings a potential new learning opportunity.

Do we share what we know? The NHS is made up of over a million individuals in hundreds of organisations, each of which have their own knowledge. Is the knowledge of individuals available to the whole organization? Is the knowledge or organizations available to the whole NHS? Not at present. How many times have we lost valuable knowledge and expertise when a staff member moves on? How many times have we "reinvented the wheel" when we could have learned from someone else's experience? How many times have

patients suffered as a result of the "postcode lottery"?

Do we use what we know to best effect? Not always. In the NHS Plan, the NHS was described as "a 1940s infrastructure operating in the 21st century". Clearly our knowledge has not always been applied to best effect, and we have fallen behind the times. How many times have we had an idea about how a process or an activity could be improved, but felt we lacked the time or resources to do anything about it? How many times have we had an idea that might help our colleagues, but we keep quiet because our colleagues might not appreciate us "telling them how to do their job"? How many times have we implemented a new initiative, only to find we reverted back to the "old way" a few months later? Perhaps we have had insights about how our patients' needs could be better met, but there was no forum for us to share and explore those insights so we just forgot about it.

16. Which of the following statement correctly highlight the relationship of information and knowledge?
- A. Information and Knowledge are distinct identities and cannot be interchanged.
 - B. Information added with experience and creativity can be called Knowledge.
 - C. Knowledge is wisdom and insight only and richer than information.
 - D. Certain additions after study or experience can enrich information so much to be identified as knowledge.
 - E. Knowledge is information in itself just richer than it.
17. What can be said about the NHS?
- A. It is a knowledge management company
 - B. It is a health care and health management company
 - C. NHS is not an organization but knowledge management software.
 - D. NHS is a hospital
 - E. Nothing is clear about the NHS through the passage.
18. STATEMENT - There is always knowledge gap in the field of Health Care. What can be said about the given statement on basis of the reading of the passage?

- A. True
- B. False
- C. May be true but no supporting evidence is given
- D. Irrelevant
- E. Judgmental

19. Which statement is not true regarding the information given in the passage?
- A. Knowledge is different from information.
 - B. Knowledge gets lost by employee movement if not managed properly.
 - C. Sometimes colleagues don't share knowledge for personal reasons.
 - D. All workers except management are knowledge workers.
 - E. Most valuable resource in an organization is knowledge of its workers.
20. The author of the passage through last line of the passage seems to be
- A. Optimistic
 - B. Pessimistic
 - C. Ironical
 - D. Contrasting
 - E. Ponderous

Directions (21-27): Read the following passage to answer the given questions :

Political ploys initially hailed as master-strokes often end up as flops. The Rs. 60,000 crore farm loan waiver announced in the budget writes off 100% of overdues of small and marginal farmers holding upto two hectares, and 25% of overdues of larger farmers. While India has enjoyed 8%-9% GDP growth for the past few years, the boom has bypassed many rural areas and farmer distress and suicides have made newspaper headlines. Various attempts to provide relief (employment guarantee scheme, public distribution system) have made little impact, thanks to huge leakages from the government's lousy delivery systems. So, many economists think the loan waiver is a worthwhile alternative to provide relief. However the poorest rural folk are landless labourers who get neither farm loans nor waivers. Half of the small and marginal farmers get no loans from banks, and depend entirely on moneylenders, and will not benefit. Besides, rural India is full of the family holdings rather than individual holdings and family holdings will typically be much larger than two hectares even for dirt-poor farmers who will therefore be

denied the 100% waiver. It will thus fail in both economic and political objectives. IRDP loans to the rural poor in the 1980s demonstrated that crooked bank officials demand bribes amounting to one third the intended benefits. Very few of the intended beneficiaries who merited relief received it. After the last farm loan waiver will similarly slow down fresh loans to deserving farmers. While overdues to co-operatives may be higher, economist Snrjit Bhalla says less than 5% of farmer loans to banks are overdue ie overdues exist for only 2.25 million out of 90 million farmers. If so, then the 95% who have repaid loans will not benefit. They will be angry at being penalised for honesty.

The budget thus grossly overestimates the number of beneficiaries. It also underestimates the negative effects of the waiver encouraging wilful default in the future and discouraging fresh bank lending for some years. Instead of trying to reach the needy, through a plethora of leaky schemes we should transfer cash directly to the needy using new technology like biometric smart cards, which are now being used in many countries and mobile phones bank accounts. Then benefits can go directly to phone accounts operable only by those with biometric cards, ending the massive leakages of current schemes.

The political benefits of the loan waiver have also been exaggerated since if only a small fraction of farm families benefit, and many of these have to pay bribes to get the actual benefit, will the waiver really be a massive vote-winner? Members of joint families will feel aggrieved that, despite having less than one hectare per head, their family holding is too large to qualify for the 100% waiver.

All finance ministers, of central or state governments, give away freebies in their last budgets; hoping to win electoral regards. Yet, four-fifth of all incumbent governments is voted out. This shows that beneficiaries of favours are not notably grateful while those not so favoured may feel aggrieved, and vote for the opposition. That seems to be why election budgets constantly fail to win elections in India and the Joan waiver will not change that pattern.

21. Why do economists feel that loan waivers will benefit farmers in distress?
 - A. It will improve the-standard of living of those farmers who can afford to repay their loans but are exempted.
 - B. Other government relief measures have proved ineffective.
 - C. Suicide rates of farmers have declined after the announcement of the waiver
 - D. Farmers will be motivated to increase the size of their family holdings not individual holdings.
 - E. The government will be forced to re-examine and improve the public distribution system.
22. What message will the loan waiver send to farmers who have repaid loans?
 - A. The Government will readily provide them with loans in the future
 - B. As opposed to money lenders banks are a safer and more reliable source of credit.
 - C. Honesty is the best policy.
 - D. It is beneficial to take loans from co-operatives since their rates of interest are lower.
 - E. They will be angry at being penalised for honesty
23. What was the outcome of IRDP loans to the rural poor?
 - A. The percentage of bank: loan sanctioned to family owned farms increased
 - B. The loans benefited dishonest moneylenders' not landless labourers.
 - C. Corrupt bank officials were the unintended beneficiaries of the loans.
 - D. It resulted in the Government sanctioning thrice the amount for the current loan waiver
 - E. None of these
24. What are the terms of the loan waiver?
 - (A) One-fourth of the overdue loans of landless labourers will be written off.
 - (B) The Rs. 60,000 crore loan waiver has been sanctioned for 2.25 million marginal fanners.
 - (C) Any fanner with between 26 per cent to 100 per cent of their loan repayments overdue will be penalised.

- A. Only (A)
 B. Only (B)
 C. Both (B) and (C)
 D. All (A), (B) and (C)
 E. None of these
25. What is the author's view of the loan waiver?
 A. It will have an adverse psychological impact on those who cannot avail of the waiver
 B. It is a justified measure in view of the high suicide rate among landless labourers.
 C. It makes sound economic and political sense in the existing scenario
 D. It will ensure that the benefits of India's high GDP are felt by the rural poor.
 E. None of these
26. Which of the following cannot be said about loan waiver?
 (A) Small and marginal farmers will benefit the most.
 (B) The loan waiver penalises the serving farmers.
 (C) A large percentage i.e. ninety five percent of distressed farmers will benefit
 A. Only (C)
 B. Both (A) and (C)
 C. Only (A)
 D. Both (B) and (C)
 E. None of these
27. What impact will the loan waiver have on banks?
 A. Banks have to bear the entire brunt of the write off.
 B. Loss of trust in banks by big farmers.
 C. Corruption among bank staff will increase.
 D. Farmers will make it a habit to default on loans
 E. None of these

Direction (28-35): Five options are given in each question. One of the options has either same meaning or opposite meaning. You have to identify the option which has either same or opposite meaning.

28. 'Eloquent'
 A. Aggravate
 B. Exacerbate
 C. Fervent
 D. Acerbate
 E. Pacify
29. Consensus
 A. Fervid
 B. Embitter
 C. Vivid
 D. Discord
 E. Rhetorical
30. Remiss
 A. Forgetful
 B. Watchful
 C. Dutiful
 D. Harmful
 E. Careful
31. Canny
 A. Obstinate
 B. Handsome
 C. Clever
 D. Stout
 E. Responsible
32. Ponder
 A. Think
 B. Evaluate
 C. Anticipate
 D. Increase
 E. Postpone
33. Indiscreet
 A. Reliable
 B. Honest
 C. Prudent
 D. Stupid
 E. Valuable
34. Germane
 A. Responsible
 B. Logical
 C. Possible
 D. Relevant
 E. Repressible
35. Contravenes
 A. Abjure
 B. Accord
 C. Concurrence
 D. Adjudicate
 E. Arbitrate

SOLUTIONS

1. B

The singular countable noun 'function' in option C and E follows the quantifier 'several', which requires a plural noun. The countable noun has to be in accordance with the plural noun, therefore, 'functions' is the correct word thereby eliminating option C and E. The statement before the blanks state that bitcoins are being replaced by Cryptocurrencies. Thus, the next statement states the positive aspect which has to be of cryptocurrency not of bitcoins because of this option A and E got eliminated. Bitcoin or cryptocurrency is a system of digital money transaction so, the suitable pronoun is 'they' not 'it'.

2. D

The sentence after the blank state 'his' that means the blank sentence is about a man. Therefore, eliminating A and B option mentioning 'it' and 'they'. The correct phrase is 'of all peoples' not 'of all people'. Therefore, eliminating option C and E. Allegory means a story, poem, or picture that can be interpreted to reveal a hidden meaning, typically a moral or political one. Allegedly is used to convey that something is claimed to be the case or have taken place, although there is no proof. Therefore, allegory and barely makes no sense in the context of the statement. So, eliminating option E, A and C.

3. B

The statement before the blank is talking about three planets and statement after the blank states the features of those three plants so this implies the statement required should be about the three planets. Option A is in particular about the third plant. In option C, firstly the 'have' should be replaced by 'has' because of the subject pronoun 'it' or the 'it' should be replaced by 'they'. Also, the statement is talking about one thing or one planet. Thus, it doesn't accord with the statement followed by blank having mentioned 'they'. In option D, 'the masses' doesn't seem to fit. It should be 'their masses'. Statement E is a result therefore, it should not be placed in between rather it should be placed at the end of the passage.

4. C

Morphology is the study of the forms of things. "As in" is usually used to cite an example whereas; "As with" is written to suggest "as is the case with" therefore, as with seems more accurate. Thus, eliminating option A and E. In option A, 'arisen'

shows the past tense which is incorrect with the passage simple tense. In option B, the singular verb arises doesn't fit with the plural subject two considerations. In options D and E, it should be two considerations as the subject is plural not singular. In option E, 'relate' form of the verb doesn't fit with 'are'.

5. A

The statement after the blank states 'these problems' whereas; the statement before the blank state only one problem this means that the blank should be such statement which conveys the problems faced by scientists. In statement B, C and D the scientists found out, the information which scientist has found doesn't seem a problem because of which they have to implant fitness tracker into the elephant trunks. Statement E generally states the reason for doing this study. Therefore, statement B, C and D are eliminated.

6. C

All the sentences are related to each other and incomplete as a single sentence. To get meaning, we should combine them with a suitable answer. 'As the fear of untamed' should be the starter of the sentence to get the meaningful sentence. New Sentence: As the fear of untamed, runaway inflation in these economies abates, the global investor's comfort levels with their markets will increase.

7. C

The cabinet's approval has led to the proposed merger of SBI and the five subsidiaries. Approval is the main word here. Hence C is the correct choice. New Sentence: The approval of the proposed merger of State Bank of India and its five subsidiaries by the cabinet will create the first Indian lender to rank among the world's top 50.

8. B

According to the sentences, a combustible mixture of authoritarianism, unemployment and youth has given rise to disaffection with strongmen rulers in many countries which has in turn spilled over into uprising. So, in many countries is the most suitable response. New Sentence: In many countries, a combustible mixture of authoritarianism, unemployment and youth has given rise to disaffection with strongmen rulers which has in turn spilled over into uprising.

9. C

Here the cause of signing the petition is the revelation of the project's harmful effects that triggered an alarm. So it is this alarm that led people to action. Hence, C is the correct choice

New Sentence: Alarms triggered by the revelation of the Project's harmful effects on the environment has led over 12 million people to sign a petition calling for its halt.

10. B

'Hope' is the main word here. The US has taken the decision hoping a certain outcome. Hence, the word hoping can join the two sentences.

New Sentences: Hoping that it would allow Washington to make a big, corporate tax cut across the border, the United States is all set to enforce the border adjustment tax.

11. E

All statements are based on demonetization, while sentence E talks about Greece's Perpetual Crisis.

12. D

All statements except 'D' are based on the economists versus the economy, while sentence D talks about 'The Destructive Power of Inflation'.

13. A

All statements except 'A' are based about the same theme which is The Fight for Ocean Health while sentence A talks about The Next Phase of Climate Action.

14. E

All statements except 'A' are based about the same theme which is The Fight for Ocean Health while sentence A talks about The Next Phase of Climate Action.

15. C

All the statements except 'C' are about the Energy saving certificates. BEE in 2013 launched tradable certificates for industries which achieved energy efficiency standards. Only statement C is very general. It is more about electricity.

16. D

17. B

18. A

19. D

20. B

21. C

22. E

23. C

24. B

25. A

26. B

27. D

28. C

Word most similar in meaning to Eloquent is Fervent, which means having a skilful way with words

29. D

Consensus means general agreement. The word most opposite in meaning to Consensus is Discord

30. E

Remiss means lacking care or attention to duty, negligent.

31. C

Canny means having or showing shrewdness and good judgement, especially in money or business matters.

32. A

Ponder means think about (something) carefully, especially before making a decision or reaching a conclusion.

33. C

Indiscreet means having, showing, or proceeding from too great a readiness to reveal things that should remain private or secret

34. D

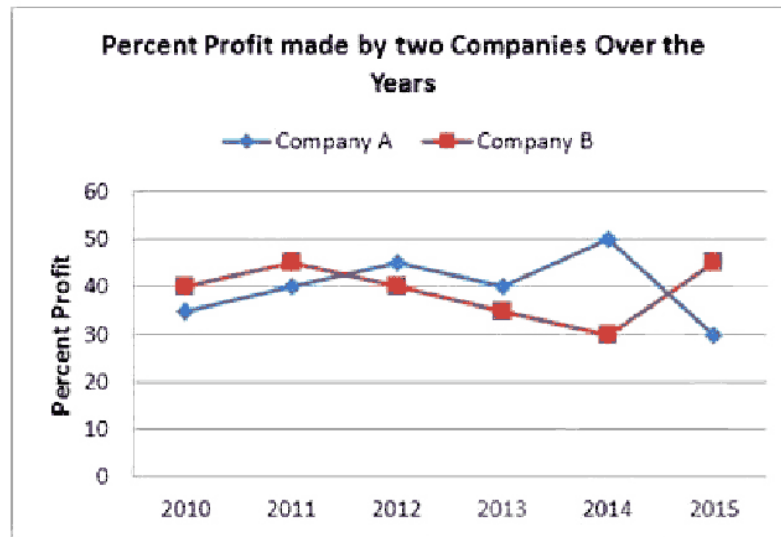
Germane means relevant to a subject under consideration.

35. A

Contravene means to go against or contradict. The word most similar in meaning to contravene is Abjure

SBI PO Mains 2016 Quantitative Aptitude Question Paper

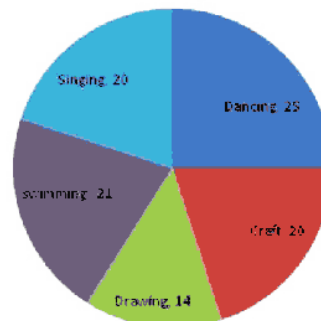
Directions (1-5): Study the following graph carefully to answer the questions that follow



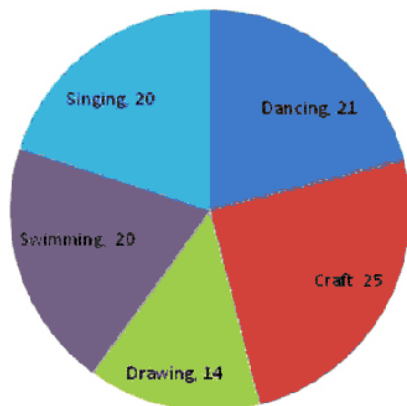
- What is the respective ratio of the amount of profit earned by company A and B together in 2011?
 A. 2 : 9
 B. 7 : 4
 C. 15 : 13
 D. Cannot determine
 E. None of these
- If the amount of profit earned by company A in the year 2013 was Rs 2.5 lakh. What was its expenditure in that year?
 A. 6.75 lakh
 B. 5.75 lakh
 C. 6.25 lakh
 D. Cannot determine
 E. None of these
- What is the average percent profit earned by company B over all the years together in (approx)?
 A. 37
 B. 39
 C. 42
 D. Cannot determined
 E. None of these
- If in the year 2010 the expenditure incurred by company A and B was the same what was the respective ratio of the income of company A and B in that year?

- | | |
|------------------|------------|
| A. 28 : 27 | B. 27 : 28 |
| C. 19 : 13 | D. 23 : 14 |
| E. None of these | |
- In the year 2014 the income of both the companies A and B was the same what was the respective ratio of expenditure of company A to the expenditure of company B in that year?
 A. 15 : 13
 B. 25 : 21
 C. 21 : 25
 D. 13 : 15
 E. None of these

Direction (6-10): Study the pie-chart carefully to answer the following questions
 Percentage of students enrolled in different activities in a school (Total student = 4000)



Percentage break up of girls enrolled in these activities out of the total students. (total number of girls = 2500)



- What is the approximate percentage of boys in the school?
 - 52%
 - 56%
 - 35%
 - 40%
 - 38%
- How many boys are enrolled in Singing and Craft together?
 - 475
 - 520
 - 640
 - 810
 - None of these
- What is the total number of girls enrolled in Swimming and Drawing together?
 - 800
 - 850
 - 840
 - 920
 - None of these
- Number of girls enrolled in Dancing is what per cent of total number of students in the school (rounded off to two digits after decimal)?
 - 16.25%
 - 14.25%
 - 13.12%
 - 9.65%
 - None of these
- What is the respective ratio of number of girls enrolled in Swimming to the number of boys enrolled in Swimming?
 - 3:4
 - 7:9
 - 17:25
 - 25:17
 - None of these

Directions: Study the following questions and choose the correct answer.

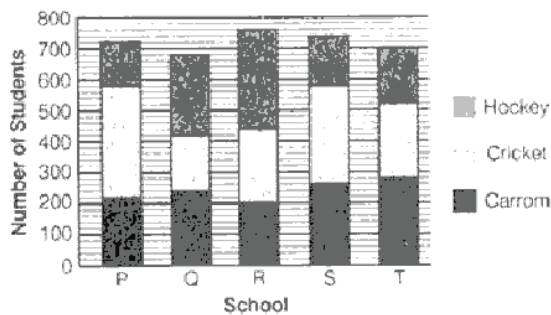
State wise production of different crops for the year 2014-2015 (in million tonnes)

State	Rice	Wheat	Pulses	Total weight of crops
Uttar Pradesh.	17.18	–	12.76	45.91
West Bengal.	–	6.81	5.35	30.35
Madhya Pradesh	13.67	13.72	–	31.71
Bihar	–	12.86	3.11	27.91
Punjab	12.36	–	2.36	29.14
All India	68.64	54.23		138.07

- W.B. produces wheat approximately what percent of the total wheat produced in India?
 - 12.5 %
 - 13.5 %
 - 18%
 - 15%
 - None of These
- The amount of rice produced by U.P. is more than the amount of pulses produced by the other four states listed in the table, by
 - 2.97 m tones
 - 3.16 m tones
 - 2.04 m tones
 - 4.89 m tonnes
 - None of These
- What is difference of the total wheat production was produced by states other than those given in the table?
 - 6.55 million tonnes
 - 8.55 million tonnes
 - 19.55 million tonnes
 - 9.55 million tonnes
 - None of These
- Bihar produced approximately what per cent of the all India production of all the three crops taken together?
 - 20.21%
 - 26.2%
 - 22.18%
 - 22.52%
 - None of These
- What is total wheat production was produced by three states Punjab, Bihar and West Bengal together?
 - 34 million tonnes
 - 36 million tonnes
 - 24 million tonnes
 - 38 million tonnes
 - None of These

Direction: Study the following graph carefully to answer the questions.

Number of Students Playing Carrom, Cricket and Hockey from Different Schools



16. Total number of students playing Carrom and Hockey together from school P is what per cent of the total number of students playing these two games together from school R?
- A. $68\frac{3}{16}$ B. $62\frac{3}{13}$
 C. $69\frac{3}{13}$ D. $63\frac{3}{13}$
 E. $66\frac{3}{13}$
17. If the number of students playing each game in school S is increased by 15% and the number of students playing each game in school Q is decreased by 5%, then what will be the difference between number of students in schools S and Q?
- A. 54 B. 218
 C. 356 D. 224
 E. 205
18. If out of the students playing Cricket from schools Q, S and T 40%, 35% and 45% respectively got selected for state level competition, what was the total number of students got selected for State level competition from these three schools together?
- A. 346 B. 241
 C. 292 D. 284
 E. 268
19. Total number of students playing Hockey from all schools together is approximately what per cent of the total number of students playing Cricket from all schools together?

- A. 84 B. 74
 C. 72 D. 79
 E. 70

20. From school P, out of the students playing Carrom, 40% got selected for State level competition. out of which 25% further got selected for National level competition. From school T, out of the students playing Carrom, 45% got selected for State level competition, out of which two-third further got selected for National level competition. What is the total number of students playing carrom from these two schools who got selected for National level competition?
- A. 106 B. 98
 C. 112 D. 108
 E. 96
21. **Direction:** Each of the questions below consists of a question and two statements numbered I and II given below it. You have to decide whether the data provided in the statements are sufficient to answer the question.
- What is the ratio of the length of a rectangle to the side of a square?
- I. The area of the square is 576 sq cm and the area of the rectangle is 600 sq cm.
 II. The breadth of the rectangle is half the side of the square.
- A. The data in Statement I alone are sufficient to answer the question, while the data in Statement II alone are not sufficient to answer the question.
 B. The data in Statement II alone are sufficient to answer the question, while the data in Statement I alone are not sufficient to answer the question.
 C. The data in either Statement I alone are in Statement II alone are sufficient to answer the question.
 D. The data in both the Statements I and II are not sufficient to answer the question.
 E. The data in both the Statements I and II together are necessary to answer the question.
22. **Directions:** In each of the following questions, a question is followed by information given in them Statements I, II and III. You have to study the question along with the statements and decide the information given in which or the statements/ is necessary to answer the question.

What is the cost of flooring the rectangular hall?

- I. Length and the breadth of the hall are in the ratio of 3:2
 - II. Length of the hall is 48 m and cost of flooring is ₹ 850 Per sq.m.
 - III. Perimeter of the hall is 160 m and cost of flooring is ₹ 850 per sq m
- A. I and II
 - B. I and III
 - C. Only III
 - D. I and either II or III
 - E. Any two of the three

23. **Direction:** In these questions, a question is given followed by information in three statements. You have to consider the information in all the three statements and decide the information in which of the statement(s) is not necessarily required to answer the question and therefore can be dispensed with. Indicate your answer accordingly

How many students from institute 'A' got placement?

- I. Number of students studying in institutes A and B are in the ratio of 3:4 respectively.
 - II. Number of students who got placement from institute B is 120% of the number of students who got placement from institute A
 - III. 80% of the students studying in institute B got placement.
- A. None of the statements can be dispensed with
 - B. Only I
 - C. Only II
 - D. Any one of the three
 - E. Question cannot be answered even with the information in all three statements

24. **Directions:** Each of the questions below consists of a question and two statements numbered, I and II given below it. You have to decide whether the data given in the statements are sufficient to answer the question. Read both statements and choose the most appropriate option.

Among M, N, D, P and K, who earns more than only the least earner among them?

- I. N earns more than M and P but less than only D.
- II. M earns more than P who earns more than K.

- A. If the data in statement I alone are sufficient to answer the question, while the data in statement II alone are not sufficient to answer the question.
- B. The data in statement II alone are sufficient to answer the question, while the data in statement I alone are not sufficient to answer the question.
- C. The data either in statement I alone or in statement II alone are sufficient to answer the question.
- D. If the data in statement I and II together are not sufficient to answer the question.
- E. The data in both statements I and II together are necessary to answer the question.

25. **Directions:** In each of these questions, a question is given followed by information in three statements. You have to find out the data in which statement(s) is sufficient to answer the question and mark your answer accordingly.

What are the marks scored by Abhijit in English?

- I. Marks scored by Abhijit in Maths are more than his marks in Science by 20.
 - II. Total marks scored by Abhijit in Maths, Science and English are 198.
 - III. Marks scored by Abhijit in Science are more than his marks in English by 12.
- A. Any two of the three
 - B. Only II and III
 - C. All I, II and III
 - D. Question cannot be answered even with the information in all the three statements
 - E. None of the above

26. **Directions:** Study the information carefully to answer the following questions: An urn contains 5 red, 3 green, 2 blue and 4 yellow marbles.

If three marbles are picked at random, what is the probability that one is green and two are yellow?

- A. $\frac{3}{14}$
- B. $\frac{2}{91}$
- C. $\frac{9}{182}$
- D. $\frac{7}{545}$
- E. None of these

27. If two marbles are picked at random, what is the probability that either both are red or both are green?

- A. $\frac{5}{7}$
- B. $\frac{5}{14}$
- C. $\frac{1}{7}$
- D. $\frac{1}{14}$
- E. None of these

28. **Directions:** Find the appropriate relation for quantity 1 and quantity 2 in the following question:

Quantity I: the unit digit in $(6817)^{754}$

Quantity II: the unit digit in $(3^{65} \times 6^{59} \times 7^{71})$

- A. Quantity I > Quantity II
- B. Quantity I < Quantity II
- C. Quantity I \geq Quantity II
- D. Quantity I \leq Quantity II
- E. No relation

29. **Directions:** Find the appropriate relation for quantity 1 and quantity 2 in the following question:

An artificial kund is filled by three pipes with uniform flow. The first two pipes operating simultaneously fill the kund at the same time during which the kund is filled by the third pipe alone. The second pipe fills the kund 5 hours faster than the first pipe and 4 hours slower than the third pipe.

Quantity 1: The time required by the first pipe?

Quantity 2: Time taken by all three pipes to fill the Kund simultaneously

- A. Quantity 1 > Quantity 2
- B. Quantity 1 \geq Quantity 2
- C. Quantity 1 < Quantity 2
- D. Quantity 1 \leq Quantity 2
- E. Quantity 1 = Quantity 2 or no relation.

30. **Directions:** Find the appropriate relation for quantity 1 and quantity 2 in the following question:

Quantity 1: In an examination, Ankita scored 35 marks less than Puneeta. Puneeta scored 65 more marks than Meenakshi. Rakhi scored 115 marks, which is 20 marks more than Meenakshi's. Simpy scored 108 marks less than the maximum marks of the test. What approximate percentage of marks did Simpy score in the examination, if she got 67 marks more than Ankita?

Quantity 2: The length of a rectangle is increased by 60%. By what percent would the width have to be decreased to maintain the same area?

- A. Quantity 1 < Quantity 2
- B. Quantity 1 \leq Quantity 2
- C. Quantity 1 \geq Quantity 2

D. Quantity 1 > Quantity 2

E. None of these

Directions (31-32): Read the following information to answer the questions:

There are 650 candidates from five different states to participate in a competition. From state 1, the number of candidates is 12% of the total candidates. From state 2 there are one-fifth of the total candidates. There are 8% of total candidates from state 3. The number of candidates from state 4 and state 5 is equal.

31. How many candidates did participate from state 4?

- A. 390
- B. 195
- C. 78
- D. 187

E. None of these

32. What is the ratio between the number of candidates from state 2 and state 3?

- A. 3 : 5
- B. 2 : 5
- C. 5 : 2
- D. 5 : 3

E. None of these

Directions (33-35): Read the following information to answer the questions given below:

24 men can do a work in X days and 32 women can do the same work in (X + 8) days. The ratio of work done by 15 men and 12 women in the same time is 3:1.

33. What is the value of X?

- A. 15
- B. 10
- C. 12
- D. 18

E. None of these

34. In how many days, the work will be completed if 5 men and 4 women work together?

- A. 24 days
- B. 18 days
- C. 36 days
- D. 48 days

E. 30 days

35. 10 men and 24 women works for 6 days on the same work and the remaining work is done by 18 boys in 18 days. Then find the number of days in which 12 boys can complete the whole work.

- A. 54 days
- B. 45 days
- C. 63 days
- D. 35 days

E. None of these

SOLUTIONS

1. D

Cannot be determined because profit amount cannot be determined.

2. C

Let the expenditure of company A in 2013 was x then

$$40 = \frac{2.5}{x} \times 100 \Rightarrow x = 6.25$$

3. B

$$\text{Required Average} = (40+45+40+35+30+45)/6 \\ = 39.16 = 39(\text{approx.})$$

4. B

Let the expenditure of Companies A and B in 2010 be Rs A lakh each.

For company A

$$35 = \frac{A_1 - A}{A} \times 100 \Rightarrow 135A = 100A_1 \dots\dots (I)$$

For company B

$$40 = \frac{A_2 - A}{A} \times 100 \Rightarrow 140A = 100A_2 \dots\dots (II)$$

Dividing (I) by (II) we get x

$$\text{Required Ratio: } A_1/A_2 = 135/140 = 27/28$$

5. D

$$A = 50 = \frac{x - E_1}{E_1} \times 100$$

$$150 E_1 = 100x \dots\dots (I)$$

$$B = 30 = \frac{x - E_2}{E_2} \times 100$$

$$130 E_2 = 100x \dots\dots (II)$$

$$\text{Required Ratio: } E_1/E_2 = 130/150 = 13:15$$

6. E

$$\text{Boys \%} = \frac{(4000 - 2500)}{4000} \times 100 = 38\% \text{ approx.}$$

7. A

Total students enrolled in singing & craft

$$= \frac{4000 \times (20 + 20)}{100} = 1600$$

Total girls enrolled in singing & craft

$$= \frac{2500 \times (20 + 25)}{100} = 1125$$

$$\text{No. of boys enrolled} = 1600 - 1125 = 475$$

8. B

$$\frac{2500 \times (20 + 14)}{100} = 850$$

9. C

No. of girls enrolled in dancing

$$= \frac{21 \times 2500}{100} = 525$$

$$\% = \frac{525}{4000} \times 100 = 13.12\%$$

10. D

Total students in swimming = 840

No. of girls enrolled in swimming

$$= \frac{2500 \times 20}{100} = 500$$

No. of boys enrolled in swimming = 340

$$\text{Ratio} = 500 : 340 = 25 : 17$$

11. A

Total wheat produces in

W.B. = 6.81 million tonnes

Total wheat produces in India

= 54.23 million tonnes

Required percentage

$$= (6.81 \times 100) / 54.23 = 12.5\%$$

12. C

Total amount of rice produced by

U.P = 17.18 million tonnes

Total amount of pulses produced by the other four states

$$= (5.35 + 4.32 + 3.11 + 2.36)$$

$$= 15.14 \text{ million tonnes}$$

$$\text{Required answer} = 17.18 - 15.14$$

$$= 2.04 \text{ million tonnes}$$

13. D

State that is not in list is produced

$$= (15.97 + 6.81 + 13.72 + 12.86 + 14.42) - 54.23$$

$$= 63.78 - 54.23 = 9.55 \text{ million tonnes}$$

14. A

Required percentage

$$= (27.91 \times 100) / 138.07 = 20.21\%$$

15. A

Total wheat production was produced by three states Punjab, Bihar and West Bengal =
(14.42+12.86+6.81) = 34 million tonnes

16. C

Total number of students playing Carrom and Hockey together from school P = 220 + 140 = 360
Total number of students playing Carrom and Hockey from School R = 200 + 320 = 520
Therefore, required percentage

$$= \frac{360}{520} \times 100\% = 69 \frac{3}{13}\%$$

17. E

New number of students in school S = 115% of 740 = 851
New number of students in school Q = 95% of 680 = 646
Therefore, required difference = 851 - 646 = 205

18. C

Number of students who got selected for state level competition from schools Q, S and T = 40% of 180 + 35% of 320 + 45% of 240 = 72 + 112 + 108 = 292

19. D

Total number of students playing Hockey from all the schools together = 140 + 260 + 320 + 160 + 180 = 1060
Total number of students playing cricket from all the schools together = 360 + 180 + 240 + 320 + 240 = 1340

$$\text{Therefore, required percentage} = \frac{1060}{1340} \times 100\% = 79\%$$

20. A

Number of students who got selected for National level competition from school P (In Carrom)

$$= \frac{25}{100} \times \frac{40}{100} \times 220 = 22$$

Number of students who got selected for National level competition from school T (in Carrom)

$$= \frac{2}{3} \times \frac{45}{100} \times 280 = 84$$

Therefore, total number of students (Playing

carrom) who got selected for National level from these two schools = 22 + 84 = 106

21. E

From statement I, Area of square = 576 sq cm
 \therefore Side of square = 24 cm

Area of rectangle = $l \times b$
 $l \times b = 600$ sq cm

From statement II, Suppose the breadth of the rectangle is x . Then side of the square = $2x$
Combining both the information, we have
 $x = 12$ cm

Now, $l \times 12 = 600$

$$\therefore l = \frac{600}{12} = 50 \text{ cm}$$

$$\therefore \text{Required ratio} = \frac{50}{24} = \frac{25}{12} = 25:12$$

Both the statements together are sufficient.

22. E

From I and II,
Length = $3x = 48$ m
 $\therefore x = 16$

Breadth = $2x = 32$ m

Hence, Area of floor = 48×32

Cost of flooring = $48 \times 32 \times 850 = ₹ 1305600$

From I and III, $2(l + b) = 160$

$2(3x + 2x) = 160$

$10x = 160$

$\therefore x = 16$

\therefore Length = $3 \times 16 = 48$ m

Breadth = $2x = 32$ m

Cost of flooring = $(48 \times 32) \times 850 = ₹ 1305600$

Similarly, from II and III, we can find

$l = 48$ m

$b = 32$ m

and Total cost of flooring = ₹ 1305600

23. E

From I No. of students studying in A and B are $3x$ and $4x$ respectively.

From II No. of students studying in B who got placement

$$= (4x \times 80) \div 100 = 16x/5$$

Hence Question cannot be answered even with the information in all the three statements

Hence option E is correct

24. E

From I and II: $D > N > M > P > K$.

25. C

Suppose marks scored by Abhijit in English = x

From statement I,

Marks in science = x + 12

From statement III,

Marks in mathematics = x + 12 + 20

= x + 32

From statement II,

English + Science + Mathematics = 198

x + x + 12 + x + 38 = 198

3x = 154

x = 154/3

All I, II and III are required to find answer.

26. C

Required probability

$$= \frac{{}^3C_1 \times {}^4C_2}{{}^{14}C_3} = \frac{3 \times 6}{364} = \frac{9}{182}$$

27. C

Required probability

$$= \frac{{}^5C_1 \times {}^3C_2}{{}^{14}C_2} = \frac{(10+3)}{91} = \frac{13}{91} = \frac{1}{7}$$

28. A

Unit digit in $7^4 = 1 \therefore$ Unit digit in $7^{754} =$ Unit digit in $\{7^{4^{188}} \times 7^2\}$

= Unit digit in $(1 \times 49) = 9$

Unit digit in $3^4 = 1 \therefore$ Unit digit in $3^{65} = 3^{64} \times 3^1 = 3$

Unit digit in $6^{59} = 6$, Unit digit in $7^{71} =$ Unit digit in $7^{4^{17}} \times 7^3$

Unit digit in $7^3 = 3 \rightarrow$ Required digit = Unit digit in $(3 \times 6 \times 3) =$ Unit digit in 54
= 4

so Quantity I > Quantity II

29. A

Quantity 1:

Let the first pipe alone takes x hours to fill the tank.

\Rightarrow The second and third pipes will take (x-5) and (x-9) hours respectively.

According to the given information:

$$\therefore \frac{1}{x} + \frac{1}{x-5} = \frac{1}{x-9}$$

$$\Rightarrow \frac{(x-5)+x}{x(x-5)} = \frac{1}{x-9}$$

$$\Rightarrow (x-9)(2x-5) = x^2 - 5x$$

$$\Rightarrow 2x^2 - 5x - 18x + 45 = x^2 - 5x$$

$$\Rightarrow x^2 - 18x + 45 = 0$$

$$\Rightarrow (x-15)(x-3) = 0$$

$$\Rightarrow x = 15, 3$$

The first pipe can take 15 hours to fill the kund.

\therefore 3 hours doesn't satisfy the statement.

Quantity 2:

\therefore Time taken by second pipe = x-5

\Rightarrow Time taken by second pipe = 15-5 = 10 hours

\therefore Time taken by third pipe = x-9

\Rightarrow Time taken by third pipe = 15-9 = 6 hours

Now,

$$\Rightarrow \text{Net part filled in 1 hour} = \frac{1}{15} + \frac{1}{10} + \frac{1}{6}$$

$$\Rightarrow \text{Net part filled in 1 hour} = \frac{4+6+10}{60}$$

$$\Rightarrow \text{Net part filled in 1 hour} = \frac{20}{60} = \frac{1}{3}$$

\therefore The Kund will be full in 3/1 hours if all the pipes are opened simultaneously

Now, comparing

15 > 3

Thus, Quantity 1 > quantity 2

30. D

Quantity 1-

Rakhi's marks = 115

Meenakshi's marks = 115 - 20 = 95

Puneeta's marks = 95 + 65 = 160

Ankita's marks = 160 - 35 = 125

Simpy's marks = 125 + 67 = 192

Total maximum marks = 192 + 108 = 300

Required percentage marks of Simpy

$$= \frac{192}{300} \times 100 = 64\%$$

Quantity 2-

Let length and breadth be 100.

After increase in length it become 160, then reduction in breadth be 'x'

Now, $160 \times x = 100 \times 100$

Hence, $x = \frac{10000}{160} = 62.5$ i. e.,

Reduction in breadth be $100 - 62.5 = 37.5\%$

Hence, Quantity 1 > Quantity 2

31. B

Number of candidates from state 4 and state 5

$$= \frac{650 \times 60}{100} = 390$$

∴ Number of candidates from state 4

$$= \frac{390}{2} = 195$$

32. C

Required ratio = $20 : 8 = 5 : 2$

33. B

$$\frac{M_1 \times D_1}{W_1} = \frac{M_2 \times D_2}{W_2}$$

$$\frac{15m}{3} = \frac{12w}{1}$$

$$5m = 12w$$

$m = 12, w = 5$

given, $24m \times X \text{ days} = 32w \times (X+8) \text{ days}$

$$24 \times 12 \times X = 32 \times 5 \times (X + 8)$$

$$9X = 5X + 40$$

$$4X = 40$$

$$X = 10 \text{ days}$$

34. C

35. A

$$(10m + 24w) \times 6 + 18B \times 18 = 2880$$

$$(120m + 24 \times 5) \times 6 + 18B \times 18 = 2880$$

$$1440 + 18B \times 18 = 2880$$

$$B = 40 / 9$$

$$\text{no. of days} = \frac{\text{total work}}{12 \text{ boys}}$$

$$\text{no. of days} = \frac{2880}{12 \times \frac{40}{9}}$$

$$\text{no. of days} = \frac{2880 \times 9}{12 \times 40}$$

$$\text{no. of days} = 54 \text{ days}$$

SBI PO Mains 2016 Reasoning Question Paper

Directions (1-5): Study the following information carefully and answer the questions given below:

When a word and number arrangement machine is given an input line of words and numbers, it arranges them following a particular rule. The following is an illustration of input and its rearrangement. (All the numbers are two-digit numbers).

Input: dean out 51 27 four 26 aim 16
Step I: 27 dean out 51 four 26 aim 16
Step II: dean 27 out 51 four 26 aim 16
Step III: 51 dean 27 out four 26 aim 16
Step IV: four 51 dean 27 out 26 aim 16
Step V: 16 four 51 dean 27 out 26 aim
Step VI: aim 16 four 51 dean 27 out 26
Step VII: 26 aim 16 four 51 dean 27 out
Step VIII: out 26 aim 16 four 51 dean 27
And Step VIII is the last step of the above arrangement as the intended arrangement is obtained. As per the rules followed in the given steps find out the appropriate steps for the given input.

Input: Intel 90 81 live 40 can 17 open time 52 37 ball ear

- How many steps will be required to complete the given input?
A. Eight
B. Twelve
C. Eleven
D. Thirteen
E. None of these
- How many elements are there between 'ball' and 'open' in the second- last step?
A. One
B. Two
C. Three
D. Four
E. None of these
- What is the position of '40' in step VII?
A. Fifth from the left end
B. Fifth from the right end
C. First from the left end
D. Ninth from the right end
E. None of these
- Which of the following is seventh to the left of 'live' in step V?
A. can
B. 81
C. intel
D. open
E. None of these
- Which of the following is sixth to the right of the third element from the left end in Step X?
A. 37
B. 17
C. ball
D. intel

Directions (6-10): Study the following information carefully and answer the questions given below-

In the following questions, the symbols @, &, %, \$ and * are used with the following meanings:

'M & N' means 'M is not greater than N'.

'M * N' means 'M is not smaller than N'.

'M % N' means 'M is neither greater than nor equal to N'.

'M \$ N' means 'M is neither smaller than nor equal to N'.

'M @ N' means 'M is neither greater than nor smaller than N'.

In each of the following questions assuming the given statements to be true, find out which of the three conclusions (a), (b) and (c) given below them is/are definitely true.

- $G \$ R, R \$ T, K \% T, K * S$
Then which of the following conclusion follows?
(a) $T \$ S$
(b) $G \$ K$
(c) $S \% K$
A. Conclusion (a) Only
B. Conclusion (b) Only
C. Conclusion (a) and (b) Only
D. Conclusion (a) and (c) Only
E. All Follows
- $P \% Q, Q \% N, N @ G, G * R, R \$ S$
Then which of the following conclusion follows
(a) $R \$ Q$
(b) $P \$ S$
(c) $N \% S$
A. Conclusion (a) Only
B. Conclusion (c) Only
C. Conclusion (b) Only
D. Conclusion (b) and (c) Only
E. None of the conclusions follow
- $P @ Q, Q \$ N, N * G, G @ R, R \& S$
Then which of the following conclusion follows
(a) $Q \$ R$
(b) $P * S$
(c) $N @ S$
A. Conclusion (a) Only
B. Conclusion (b) Only
C. Conclusion (a) and (b) Only
D. Conclusion (a) and (c) Only

9. G % H, H * N, N * P, P % M
Then which of the following conclusion follows
(a) H @ P
(b) G \$ M
(c) H \$ P
A. Conclusion (a) Only
B. Conclusion (b) Only
C. Conclusion (a) and (c) Only
D. Either Conclusion (a) or (c) Only
E. Conclusion (c) Only
10. R % T, T @ N, N & P, P \$ M
Then which of the following conclusion follows
(a) T * M
(b) R % P
(c) R * M
A. Conclusion (a) Only
B. Conclusion (b) Only
C. Conclusion (c) Only
D. None Follows
E. All Follows

Directions (11-15): Study the following information carefully and answer the questions given below:

In a certain code language

'form long single tired' is written as '#G4 @E6 %M4 \$D5'

'large statue turn find' is written as '@E6 #E5 \$N4 %D4'

'some liberty fix task' is written as '%X3 \$K4 #Y7 @E4'

'tall figure like start' is written as '\$L4 #E4 @T5 %E6' ###DONE###

11. Which of the following code for 'smart'?
- | | |
|--------|---------|
| A. %S5 | B. @T5 |
| C. %T5 | D. \$S4 |
| E. @L4 | |
12. Which of the following code for 'long'?
- | | |
|------------------|---------|
| A. #G4 | B. @E6 |
| C. %M4 | D. \$D5 |
| E. None of these | |
13. In the given code language, what does the code '@T5' stand for?
- | | |
|------------------|---------|
| A. start | B. like |
| C. Figure | D. tall |
| E. None of these | |

14. Which of the following code for 'fix large'?
- | | |
|------------------|-------------|
| A. @E6 \$K4 | B. %X3 %D4 |
| C. %X3 #E5 | D. #E5 \$K4 |
| E. None of these | |
15. Which of the following code for 'tired'?
- | | |
|------------------|---------|
| A. %M4 | B. @E6 |
| C. #G4 | D. \$D5 |
| E. None of these | |

Direction (16-20): Study the following information carefully and answer the questions given below:

There are five persons P,Q,R,S and T. Two of them ages are 35 and other three ages are viz, 27, 29 and 32. They are working in Google, Sony, Samsung, Apple and Alibaba, but not necessarily in the same order. A person working in Sony and the one who is working in Alibaba are the same age. They belong to different countries, Canada, US, France, China and India, but not necessarily in the same order. The person working in Alibaba is tallest, while the one is working in Google is shortest among the five persons. The one who is working in Sony and his height lies between the one who is working in Samsung and the one who is working in Alibaba respectively. S is working in Sony and his age is 35 while T belongs to France and his age is 32. The person working in Samsung belongs to China and his age is 27. Q belongs to India, while P belongs to Canada and working in Google.

16. Where does Q work?
- | | |
|------------------------|------------|
| A. Sony | B. Alibaba |
| C. Samsung | D. Apple |
| E. Can't be determined | |
17. Where does T work?
- | | |
|------------------------|------------|
| A. Sony | B. Alibaba |
| C. Apple | D. Samsung |
| E. Can't be determined | |
18. Where does R work?
- | | |
|------------------------|------------|
| A. Samsung | B. Alibaba |
| C. Apple | D. Sony |
| E. Can't be determined | |
19. According to Height, who among the following between P and R?
- | |
|--------------------------------------|
| A. The one who is working in Alibaba |
| B. The one who is working in Sony |
| C. The one who is working in Samsung |
| D. Can't be determined |
| E. None of these |

20. Which of the following statement is correct?
- A. T belongs to Canada
 - B. P age is 32
 - C. R works in Alibaba
 - D. S belongs to US
 - E. Q works in Samsung

Directions (21-23): Each passage is followed by a set of five statements. Answer according to the directions given for each question.

There's a lot of outrage on the Internet about migrants coming ashore and immediately taking selfies. You seriously do not want to read the comments in the Daily Express after the site ran a story under a photo of smiling Syrian refugees with phones on selfie sticks. This particular tweet, showing a woman taking a selfie when she reaches land, is doing the rounds of anti-immigrant websites, and is considered proof that these are rich people, "economic migrants" rather than real victims of tragedy.

Personally, I think the first thing I would do if I got off an inflatable dinghy after a long trip like that is take a selfie of myself and my kid to prove that I'd made it. I suspect that the happy Syrians are doing much the same thing. In fact, according to Middle East Online, many migrants consider their smartphones to be more important than food. "Our phones and power banks are more important for our journey than anything, even more important than food," said Wael, a 32-year-old from the devastated Syrian city Homs who reached the Greek resort island of Kos on Thursday morning.

21. Which of the above statements would most weaken the author's argument as presented in the final paragraph of the passage: "I suspect that the happy Syrians are doing much the same thing. "?
- A. It was found that for refugees, taking selfies and posting them on the internet was the only way of telling their families back home that they have made it across the borders.
 - B. Research done on earlier instances of the mass migrations of the past have proved that the first instinct of a refugee on reaching his destination is the hunt

for a suitable shelter, with little regard for exhaustion and communication with leftovers back home.

- C. Migrants are motivated by the love of travel and seeking new places rather than food and shelter.
 - D. A profile study done upon the latest batch of migrants reaching the shores of Europe prove that most of them are erstwhile businessmen, small time industrialists and traders who are looking to set up shop in European countries.
 - E. Middle Eastern immigrants are more concerned with the safety of their cellphone devices than with arranging food and shelter.
22. Which of the above statements strengthens the author's argument "I suspect that the happy Syrians are doing much the same thing. "
- A. It was found that for refugees, taking selfies and posting them on the internet was the only way of telling their families back home that they have made it across the borders.
 - B. Research done on earlier instances of the mass migrations of the past have proved that the first instinct of a refugee on reaching his destination is the hunt for a suitable shelter, with little regard for exhaustion and communication with leftovers back home.
 - C. Migrants are motivated by the love of travel and seeking new places rather than food and shelter.
 - D. A profile study done upon the latest batch of migrants reaching the shores of Europe prove that most of them are erstwhile businessmen, small time industrialists and traders who are looking to set up shop in European countries.
 - E. Middle Eastern immigrants are more concerned with the safety of their cellphone devices than with arranging food and shelter.
23. Which of the above statements can be safely inferred from the passage?
- A. It was found that for refugees, taking selfies and posting them on the internet was the only way of telling their families back home that they have made it

- B. Research done on earlier instances of the mass migrations of the past have proved that the first instinct of a refugee on reaching his destination is the hunt for a suitable shelter, with little regard for exhaustion and communication with leftovers back home.
- C. Migrants are motivated by the love of travel and seeking new places rather than food and shelter.
- D. A profile study done upon the latest batch of migrants reaching the shores of Europe prove that most of them are erstwhile businessmen, small time industrialists and traders who are looking to set up shop in European countries.
- E. Middle Eastern immigrants are more concerned with the safety of their cellphone devices than with arranging food and shelter.

24. **Direction:** Read the following statements and answer the question given below.

U.S. fraternity and sorority members who drink heavily while in school don't tend to drink after graduation, according to a recent study in Psychology of Addictive Behaviours.

Which of the following would be a logical extension of the above passage?

- A. Most men come out of a drinking binge after they cross thirty.
- B. With graduation comes a sense of responsibility which makes students abstain from such vices.
- C. Drinking begins as a group activity and as students leave these groups, the habit of drinking is also left behind.
- D. Drinking heavily during college days make most students realize the harmful effects of alcoholic drinks.
- E. None of these

25. **Direction:** Read the following statements and answer the question given below.

During peak hours the local trains of city M are chaotic. Generally, peak hours are a specific time period in the morning when everyone goes to work and in the evening when people return. Some people feel that the state government has not taken any measures in the past two years to deal with the situation.

Which of the following weakens the perception of the people?

- A. In the past one year the state government has increased the frequency of trains in peak hours and has also increased the number of passengers per train.
- B. In the past two years the state government has received many petitions signed by the locals of city M travelling by trains, suggesting that much improvement is required in the current condition of the trains.
- C. The first-class passengers of the local trains feel that their plight is worse than that of the second-class passengers in the trains.
- D. As the population of the city is ever increasing due to high rate of migration and better job opportunity, there is a surge in the number of people travelling by trains.
- E. A passenger has given a statement that 20 years ago it was possible to get inside the train.

Directions: Read the following information carefully and answers the given question.

The municipal authority has made English language as one of the compulsory subjects in all primary schools under its control from the current academic year.

26. Which of the following can be an assumption according to the given information? (An assumption is something that is supposed or taken for granted).
- A. The students in the primary school run by municipal authority are not taught English so far.
 - B. The parents of the primary school students do not have working knowledge in English language so far.
 - C. All the primary schools outside the control of municipal authority teach English language as one of the compulsory subjects
 - D. Other subjects can be changed according to the will of the students.
 - E. Use of English is continuously growing so it should be taught at primary levels in school and it should not be neglected at this level.

27. **Directions:** In each of the following questions, two statements numbered I and II are given. These may cause an effect relationship between the two statements. These two statements may be the effect of the same cause or independent causes. These statements may be independent causes without having any relationship. Read both the statements in each question and mark your answer as:

Statements:

- I. The university has instructed all the colleges under its jurisdiction to ban use of mobile phones inside the college premises.
 II. Majority of the teachers of the colleges signed a joint petition to the university complaining the disturbances.

- A. If statement I is the cause and II is its effect.
 B. If statement II is the cause and I is its effect.
 C. If both the statements I and II are independent causes.
 D. If both the statements I and II are effects of independent causes.
 E. If both the statements I and II are effects of some common cause.

Directions (28-29): In each of the following questions, a statement is followed by two courses of action. A course of action is taken for redressal, follow up, etc. Read the statement carefully and answer:

28. **Statement:** Several unscrupulous and non-affiliated colleges have started to lure unsuspecting students by giving attractive advertisements.

Course of Action:

- I. Students should read the advertisements and decide themselves.
 II. Students and guardians should contact the University itself and verify the data provided.

- A. Only course of action I follows
 B. Only course of action II follows
 C. Either I or II follows
 D. Neither I nor II follows
 E. Both I and II follow

29. **Statement:** An unacceptable number of children die during the first year of their lives. The high incidence of infant deaths is a major cause of concern for the health ministry.

Course of Action:

- I. All government hospitals should be privatised to improve health conditions.

- II. Governments should higher levels of their budgets to health services.

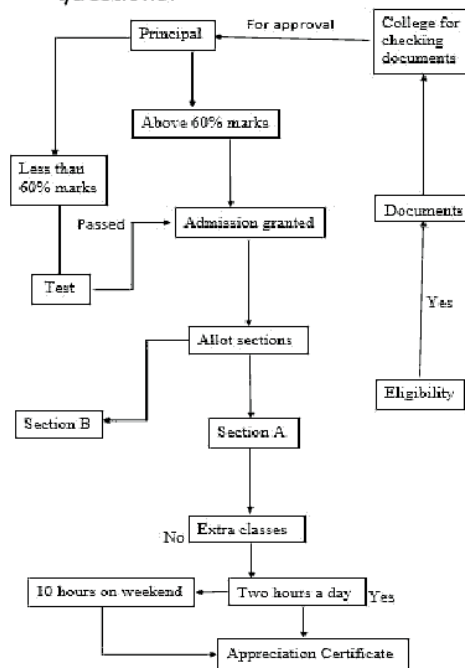
- A. Only course of action I follows
 B. Only course of action II follows
 C. Either I or II follows
 D. Neither I nor II follows
 E. Both I and II follow

30. The district administration has issued a circular to all the farmers under its jurisdiction advising them for not using pesticides indiscriminately as it may pollute the ground water.

Which of the following can be assumed from the given statement?

- A. People may stop using ground water if the farmers continue to use pesticides indiscriminately.
 B. The polluted ground water can cause health problems.
 C. Farmers may refrain from using pesticides indiscriminately.
 D. People in the district are majorly dependent on ground water for drinking use.
 E. None of these

Directions (31-35): The procedure for the admission in the college by the students is depicted in the Data flow diagram. After analyzing the given Data flow diagram, go through the following questions:



31. After which step the college should grant admission to the students?
- After obtaining the principal approval.
 - After getting the documents verified by the college.
 - After showing the certificate depicting the required percentage marks.
 - After fulfilling the eligibility criterion and documents verified by the college.
 - Cannot be determined.
32. What step should be taken by the student if the eligibility is not met?
- Go to the principal or concerned authority to see into the matter.
 - Report to the college and check if the eligibility norms should be relaxed.
 - If obtained the 60% marks, then admission is granted.
 - Data insufficient.
 - None of these.
33. What is the main condition that is not highlighted to allot the section A to the student?
- The section A is committed to the bright students only.
 - The section A is for the students who have scored more than 60% marks.
 - The section A students selection procedure is based on which conditions.
 - The section A is for those who have appeared for the test and eligible for the extra classes.
 - The section A must be ready to take the extra classes for the appreciation certificate.
34. What is the most sufficient condition to obtain an appreciation certificate?
- The person should enroll in section A only.
 - The admission is mere requirement to obtain the appreciation certificate.
 - The student should complete the extra classes on time.
 - If the students opt for weekend extra classes, then he/she can obtain the appreciation certificate.
 - The student should be in section A and attend the extra classes.
35. What is the next step taken by the student if the test conducted by the college is not passed?
- Then he cannot obtain the admission

- The student can go back for the approval of the principal.
- Apply for the another college having the less than 60% marks criterion.
- None of the information is true.
- The student will request the management for retest.

Directions (36-40) : Study the following information carefully and answer the questions given below:

Ten persons are sitting in two parallel rows containing five people in such a way that there is an equal distance between adjacent persons. In Row - 1, Mohan, Naresh, Omesh, Rahul and Prateek are seated (but not necessarily in the same order) and all of them are facing South. In Row -2, Ashish, Bipin, Chinu, Dinu and Jatin are seated (but not necessarily in the same order) and all of them are facing North. One seat is vacant in each row. All of them like a different colour-Red, Purple, Yellow, Orange, Blue, Green, Black, White, Pink and Grey, but not necessarily in the same order.

- Vacant seat of row-2 faces the one who sits third to the right of Rahul. Chinu neither like Orange nor Yellow. The person who likes Grey is facing South Direction.
- Naresh likes Pink and faces the one who likes Green. Only three seats are there between Rahul and Naresh.
- The person who likes Orange is facing North Direction. The person who likes Green and Vacant seat of row-2 are next to each other. The one who likes Black sits second to the right of Mohan.
- Vacant seat of row-1 is neither an immediate neighbour of Naresh nor Rahul.
- One of the immediate neighbours of vacant seat of row-1 faces Jatin. The one who likes White sits at one of the extreme ends of the line.
- Only three seats are there between Jatin and the one who faces Omesh. The one who likes Red sits at one of the extreme ends of the line.
- There are two seats between one who likes Grey and the one who likes White. Ashish sits second to the left of the seat facing Mohan.

- 8). The person who likes Blue faces North Direction. Bipin is not an immediate neighbour of Vacant seat of row-2. Naresh does not face Dinu.
- 9). There are three seats between one who likes Red and the one who likes Orange.
- 10). The person who likes Yellow faces one of the immediate seats of the one who likes Grey.
36. How many persons live between Naresh and the one who likes White?
 A. 3 B. 4
 C. 2 D. 1
 E. None
37. Who sits 3rd to the left of the vacant seat of row-2?
 A. Ashish B. No one is sitting
 C. Chinu D. Jatin
 E. Bipin
38. Find the odd one out?
 A. Omesh B. Ashish
 C. Chinu D. Rahul
 E. Bipin
39. Which of the following combination is not true?
 A. Chinu-Red B. Omesh-Black
 C. Dinu-Yellow D. Rahul-White
 E. Jatin-Orange
40. Which of the following Colour does Bipin likes?
 A. Orange B. Green
 C. Pink D. Blue
 E. None of these

Directions (41-45): In each of the following questions, two rows of numbers are given. The resultant number of each row is to be worked out separately based on the following rules and then answer the questions that follow. The operation of numbers progress from left to right.

Rules -

- (i) If an odd number is followed by another odd number which is a perfect square, then they are to be added.
- (ii) If an even number is followed by an odd number or an odd number is followed by an even number, they are to be multiplied.
- (iii) If an even number is followed by another even number, the first number is to be divided by the second number.
- (iv) If an even number which is a multiple of 5 is followed by an odd number which is also a multiple of 5, then second number is to be subtracted from the first number.
41. If x is the resultant of the first row, what is the resultant of the second row?
 A. 12 B. 6
 C. 18 D. 16
 E. None of these
42. What is the product of the resultant of the two rows?
 A. 108 B. 102
 C. 98 D. 128
 E. None of these
43. If N is the resultant of the first row, what is the sum of the resultant of the two rows?
 A. 350 B. 370
 C. 380 D. 330
 E. None of these
44.
$$\begin{matrix} 7 & 9 & 9 \\ 72 & 8 & 25 \end{matrix}$$

 What is the sum of the resultants of both rows?
 A. 110 B. 144
 C. 178 D. 134
 E. None of these
45.
$$\begin{matrix} 4 & 5 & 3 \\ P & 6 & 5 \end{matrix}$$

 If P is the resultant of the first row, what is the difference of the resultants of both rows?
 A. 45 B. 50
 C. 55 D. 60
 E. None of these

SOLUTIONS

In the rearrangement numbers and words are arranged in alternate steps on the left. First odd numbers are arranged in ascending order and then even numbers are arranged in ascending order. The words which start with consonants are arranged first in alphabetical order and then the words which start with vowels are also arranged in alphabetical order.

Input: Intel 90 81 live 40 can 17 open time 52 37 ball ear

Step I: 17 Intel 90 81 live 40 can open time 52 37 ball ear

Step II: ball 17 Intel 90 81 live 40 can open time 52 37 ear

Step III: 37 ball 17 Intel 90 81 live 40 can open time 52 ear

Step IV: can 37 ball 17 Intel 90 81 live 40 open time 52 ear

Step V: 81 can 37 ball 17 Intel 90 live 40 open time 52 ear

Step VI: live 81 can 37 ball 17 Intel 90 40 open time 52 ear

Step VII: 40 live 81 can 37 ball 17 Intel 90 open time 52 ear

Step VIII: time 40 live 81 can 37 ball 17 Intel 90 open 52 ear

Step IX: 52 time 40 live 81 can 37 ball 17 Intel 90 open ear

Step X: ear 52 time 40 live 81 can 37 ball 17 Intel 90 open

Step XI: 90 ear 52 time 40 live 81 can 37 ball 17 Intel open

Step XII: Intel 90 ear 52 time 40 live 81 can 37 ball 17 open

Step XIII: open Intel 90 ear 52 time 40 live 81 can 37 ball 17

1. D
2. A
3. C
4. B
5. C
6. C

On decoding and combining the expressions, we get,

$G > R > T > K \geq S$

Now we will check each option

Option (a) $T \& S \Rightarrow T > S$ (True)

Option (b) $G \& K \Rightarrow G > K$ (True)

Option (c) $S \% K \Rightarrow S < K$ (False)

7. E

On decoding and combining the expressions, we get,

$P < Q < N = G \geq R > S$

Now we will check each option

Option (a) $R \& Q \Rightarrow R > Q$ (False)

Option (b) $P \& S \Rightarrow P > S$ (False)

Option (c) $N \% S \Rightarrow N < S$ (False)

8. A

On decoding and combining the expressions, we get,

$P = Q > N \geq G = R \leq S$

Now we will check each option

Option (a) $Q \& R \Rightarrow Q > R$ (True)

Option (b) $P * S \Rightarrow P \geq S$ (False)

Option (c) $N @ S \Rightarrow N = S$ (False)

9. D

On decoding and combining the expressions, we get,

$G < H \geq N \geq P < M$

Now we will check each option

Option (a) $H @ P \Rightarrow H = P$ (False)

Option (b) $G \& M \Rightarrow G > M$ (False)

Option (c) $H \& P \Rightarrow H > P$ (False)

Since $H \geq P$, either (a) or (c) will be correct.

10. B

On decoding and combining the expressions, we get,

$R < T = N \leq P > M$

Now we will check each option

Option (a) $T * M \Rightarrow T \geq M$ (False)

Option (b) $R \% P \Rightarrow R < P$ (True)

Option (c) $R * M \Rightarrow R \geq M$ (False)

Solution (11-15)

In this code language, there are some letter given we have to find the exact code used for them.

Example- long

Step I- first we will count the letters of that word that is 4, then we put digit 4 at the right end.

Step II- we will put the last letter of that word then it will like- G4

Step III- at the last step 'l' is coded for '#' (first letter of each word is coded by a specific symbol like here 'l' is coded for '#'). We can find the first coded symbol by looking at the other given words.

So 'long' will be- #G4

11. B

12. A

13. A

14. B

15. C

(16-20)

Height	Person	Company	Country	Age
1	Q	Alibaba	India	35
2	S	Sony	US	35
3	R	Samsung	China	27
4	T	Apple	France	32
5	P	Google	Canada	29

16. B

17. C

18. A

19. E

20. D

21. B

This proves that taking selfies after landing is not an instinctive reaction and hence, an anomaly that deserves attention.

22. A

This provides support to the theory presented by the author

23. E

This is proved by the statement of the 32 year old refugee, as mentioned in the final line of the passage.

24. C

The passage only provides the information that students drink in school but seem to stop bingeing after they graduate. Option [A] is incorrect as there is no mention in the passage that students are only males and that they graduate at thirty. Options [B] and [D] are incorrect because it is not mentioned so in the passage. Since the passage talks about student groups - 'fraternity and sorority members' - a logical extension would be that it is these groups that prod students to begin drinking and with the breaking of these groups, the habit is also broken. Hence, [C].

25. A

Option A is a positive response to the situation. Hence, it weaknes the preception of the people.

26. E

Use of English is continuously growing so it should be taught at primary levels in school and it should not be neglected at this level.

27. B

Majority of the teachers of the colleges signed a joint petition to the university complaining the disturbances.

28. D

If the ads are misleading, reading them carefully might not help at all, neither would contacting the university because the authorities would simple reinforce the lie.

29. B

There is no evidence in the statement to suggest that privatisation will help in the reduction of infant deaths. Hence, only Action II follows.

30. C

(A), (B) and (D) are irrelevant as nothing is mentioned about them. The district administration has issued a circular to make the farmers aware of hazards that indiscriminate use of pesticides poses to ground water and plead them to refrain from the same. Hence (3) is an assumption in the given statement.

31. C

The college should grant the admission after the step that shows the certificate depicting the marks to be above 60%.

32. D

As the eligibility is fulfilled then only the further procedure is done, but if the eligibility is not fulfilled then no clear instruction is indicated, that means the data is insufficient.

33. C

The most important condition that is missing in allotting the section A is that the selection should be made on what conditions, that thing is not defined or missing in the diagram.

34. E

The main requirement is to get admission in the section A and complete the 2 hours a day condition or 10 hours per weekend condition of extra class.

35. D

As the test is passed, the student will obtain the admission but if the test is not passed, then none of the information that is given in the options is true

Solution (36-40):

Vacant seat of row-2 faces the one who sits third to the right of Rahul. Only three persons sit between Rahul and Naresh. So we get 2 possibilities-

Case-1

Row-1/South	Naresh			Rahul	
Row 2/North		Vacant			

Case-2

Row-1/South		Naresh			Rahul
Row-2/North			Vacant		

Vacant seat of row-1 is neither an immediate neighbour of Naresh nor Rahul. Naresh likes Pink and faces the one who likes Green. One of the immediate neighbour of vacant seat of row-1 faces Jatin. Only three seats between Jatin and

the one who faces Omesh. From this Case-1 is invalid.

Case-1

Row-1/South	Naresh/Pink		Vacant		Rahul	
Row-2/North	Green	Vacant		E		

Only three seats between E and the one who faces O. From this Case-1 is invalid. Now continue with Case-2.

Case-2

Row-1/South	Omesh / Black	Naresh / Pink	Mohan / Grey	Vacant	Prateek / Purple	Rahul / White
Row 2/North	Ashish / Red	Green / Chinu	Vacant	Dinu / Yellow	Jatin / Orange	Bipin / Blue

Ashish sits second to the left of the one facing Mohan. The one who likes Black sits second to the right of Mohan. Bipin is not an immediate neighbour of Vacant seat of row-2. The person who likes Grey facing South Direction. The one who likes White sits at one of the extreme ends of the line. There are two seats between one who likes Grey and the one who likes White. The one who likes Red sits at one of the extreme ends of the line. There are three seats between one who likes Red and the one who likes Orange. The person who likes Yellow faces one of the immediate neighbours of the one who likes Grey. The person who likes Blue faces North Direction.

So Final arrangement will be likes this-

Row-1/South	Omesh / Black	Naresh / Pink	Mohan / Grey	Vacant	Prateek / Purple	Rahul / White
Row-2/North	Ashish / Red	Chinu / Green	Vacant	Dinu / Yellow	Jatin / Orange	Bipin / Blue

- 36. C
- 37. B
- 38. C
- 39. A

40. D

41. B

Resultant of first row, $x -$

By rule iii, $248/8 = 31$, Now using rule i, $x = 31 + 25 = 56$

Resultant of 2nd row, $3 \times 56 = 168$, by rule iii, $168/8 = 21$

42. E

Resultant of first row -

$$24 \times 3 = 72$$

$$72/18 = 4$$

$$4/2 = 2, \text{ Resultant of first row} = 2$$

Resultant of second row -

$$17 + 81 = 98$$

$$98/14 = 7$$

$$7 \times 8 = 56, \text{ Resultant of second row} = 56$$

$$\text{Product of two} = 56 \times 2 = 112$$

43. C

44. C

Resultant of first row is 144

$$7+9 = 16$$

$$16 \times 9 = 144$$

resultant of 2nd row is

$$72/8 = 9$$

$$9+25 = 34$$

$$\text{So, the sum is } 144 + 34 = 178$$

45. C

Resultant of first row is 60

$$4 \times 5 = 20$$

$$20 \times 3 = 60$$

$$P = 60$$

resultant of the second row is 5

$$60/6 = 10$$

$$10 - 5 = 5$$

$$\text{So the difference of both resultant is } 60 - 5 = 55$$
