

SBI Clerk Prelims - 2018

Direction (1-7): Read the given passage carefully and answer the questions that follow. Certain words are printed in bold to help you locate them while answering some of these.

The first and most important step to effective financial planning is developing and implementing a budget. That, of course, sounds easy and even simplistic. But it's more difficult than it seems. Budgeting simply means to live within one's financial means. You have a limited amount of money to spend each month, so you need to separate your needs from your wants. Your "needs" usually include housing, utilities, food and clothing, medical facilities the things you can't live without. Once your needs are taken care of, any remaining money can go to unnecessary wants those items that are nice to have, but not required to live. They usually include things like cable TV, Internet service, restaurant meals, cell phones with many features, etc. You need to be careful not to confuse wants and needs. A very common reason people get into serious debt is by failing to live within their means. They use credit to supplement their wants, but eventually this will cause financial trouble. Like our family budget, the nation's General Budget has two major parts: Revenue and Expenditure. Assessing the revenues from different central taxes is the primary function of the Department of Revenue and the expenditure estimates for the current and the next year for various expenditure heads are assessed by the Department of Expenditure. The Department of Expenditure also assesses the resources of the public-sector undertakings (PSUs). The Budget division is a part of the Department of Economic Affairs. The Finance Secretary coordinates the overall Budget-making process. All of them keep the finance minister informed and seek directions from time to time. The Chief Economic

Advisor **aids** the concerned departmental officer in this process. Leaving aside the tax receipts, the other sources of the revenue which go into the Budget are the dividends paid by the PSUs on the government shareholdings, including the **interim** dividends and the capital receipts on account of the divestment of the government share holdings. Besides external receipts on account borrowing from international agencies like World Bank, ADB, etc, are also estimated and included in the assessment of the gross budgetary resources of various programmes under various ministries. For the expenditure side, various ministries providing initial estimates of plan and non-plan expenditures. The ministries discuss the plan expenditures with the Planning Commission. The Planning commission allocates resources for continuing plan programme. After the estimation of income and expenditure of the government the concept revenue deficit is brought into focus to discuss as it cause of major concern to the Government of India. Revenue deficit indicates the excess of expenditure over receipts in the revenue budget of the government. Revenue deficit means the government is not able to finance its day to day expenses or what we call the current expenditure out of its normal revenue sources like taxes. In India, the central government's budget had a surplus until 1977. But in 1978 budget, revenue deficit appeared for the first time. Since then there is revenue deficit in all years and the government is borrowing to finance the revenue deficit. Borrowing this year to finance revenue deficit will create interest payments in future (which is revenue expenditure). Increasing borrowing – interest payments – revenue deficit- borrowing explains the vicious circle of debt for the government. In this way, interest payment became the largest

expenditure item for the government A high revenue deficit gives a warning signal to the government to either curtail its expenditure or increase its revenue. The government missing its fiscal deficit target for the year means that either the revenue it collected fell short of projections, or that its expenditure was higher than planned. On the other hand, it can be said that the revenue deficit can be controlled by government by reducing its expenditure and by increasing its receipts from the various sources of tax. Data for the first eight months of 2017-18 show that the government's revenue deficit has widened at an alarming pace. Revenue deficit is the gap between the government's revenue expenditure and revenue receipts. While revenue expenditure increased in April-November 2017 by over 13 per cent over the same period of 2016, the government's revenue receipts increased by less than 2 per cent.

Source: <https://www.greenpath.com>

1. Which of the following is the source of the revenue which goes into the Budget?
 - A. Tax Receipt
 - B. Capital receipts on account of the divestment of the government share holdings
 - C. Dividends paid by the PSUs on the government shareholdings
 - D. Interim dividends paid by the PSUs on the government shareholdings
 - E. All of these
2. Which of the following are the functions of Department of Expenditure?
 - 1) Assessing the revenues from different central taxes
 - 2) Assessment of expenditure estimates for the current and the next year for various expenditure heads.
 - 3) Assessing the resources of the public-sector undertakings
 - A. Only 1
 - B. Only 2
 - C. Only 1 and 3
 - D. Only 2 and 3
 - E. All of these

3. What does the term Revenue Deficit mean?
 - A. The government fails to take care of its daily expenses through the revenue sources like taxes.
 - B. The government runs out of finance and has to borrow from agencies like World Bank, ADB, etc.
 - C. The government faces a state of cash crunch through which it is not able to maintain sufficient currency flow in the financial market.
 - D. The government imposes unjustified amount of taxes on the people to overcome its financial crises.
 - E. None of these
4. What according to the passage do people do to fulfil their wants after they run out of their budget?
 - A. People tend to confuse between needs and wants and end up converting their needs into wants.
 - B. People work hard to and try to earn more to fulfil their wants which becomes their need
 - C. People take credits to fulfil their wants and end up in troublesome debts.
 - D. People try to cut down on their needs as there they are not left with sufficient money.
 - E. People borrow money from financial institutions at low rate of interests.
5. How did the year 1978 become a benchmark with respect to Central Government's budget?
 - A. The budget in this year accounted for an extraordinary surplus that had never existed in the history of India.
 - B. The financial budget in this year was not presented.
 - C. India saw a revenue deficit for the first time in this year and from this year and after this the revenue deficit occurred in all years.
 - D. The budget in this year was challenged by the opposition parties as the government borrowed to finance the revenue deficit.

E. The budget in this year was unique as it witnessed a balanced revenue surplus.

6. Which of the following is the MOST SIMILAR in meaning to the given word?

Aids

- A. Amplifies B. Assists
C. Expands D. Borrows
E. Discriminates

7. Which of the following is the MOST OPPOSITE in meaning to the given word?

Interim

- A. Medieval B. Tentative
C. Interval D. Permanent
E. Unstable

8. **Direction:** Read the sentence to find out whether there is any error in it. The error, if any, will be in one part of the sentence. If the given sentence is correct as it is, the answer is 'No error'. Ignore the errors of punctuation, if any.

The ruling party stood/ for implementation of the bill/ and was ready to/ stake their political existence.

- A. The ruling party stood
B. For implementation of the bill
C. And was ready to
D. Stake their political existence
E. No Error

9. **Direction:** Read the sentence to find out whether there is any error in it. The error, if any, will be in one part of the sentence. If the given sentence is correct as it is, the answer is 'No error'. Ignore the errors of punctuation, if any.

Delegation is the transfer of/ authority through superior to subordinate/ at different levels/ in an organized sector.

- A. Delegation is the transfer of
B. Authority through superior to subordinate
C. At different levels
D. In an organized sector
E. No error

10. **Direction:** Read the sentence to find out whether there is any error in it. The error, if any, will be in one part of the sentence. If the given sentence is

correct as it is, the answer is 'No error'. Ignore the errors of punctuation, if any.

It must be noted that/ decentralization should be applied/ along with caution as it can/ lead to organizational disintegration.

- A. It must be noted that
B. Decentralization should be applied
C. Along with caution as it can
D. Lead to organizational disintegration
E. No error

11. **Direction:** Read the sentence to find out whether there is any error in it. The error, if any, will be in one part of the sentence. If the given sentence is correct as it is, the answer is 'No error'. Ignore the errors of punctuation, if any.

Sometimes, when you are used to/ see a player in the commentary/ box over a long period, you tend to/ forget what a great player he was.

- A. Sometimes, when you are used to
B. See a player in the commentary
C. Box over a long period, you tend to
D. Forget what a great player he was
E. No error

12. **Direction:** Read the sentence to find out whether there is any error in it. The error, if any, will be in one part of the sentence. If the given sentence is correct as it is, the answer is 'No error'. Ignore the errors of punctuation, if any.

There is no one/ I have met or heard of/ whom I can consider knowledgeable/ than my English teacher.

- A. There is no one
B. I have met or heard of
C. Whom I can consider knowledgeable
D. Than my English teacher
E. No error

13. **Direction:** Read the sentence to find out whether there is any error in it. The error, if any, will be in one part of the sentence. The number corresponding to that part will be your answer. If the given sentence is correct as it is, mark the answer as No error. Ignore the errors of punctuation if any.

The teacher instructed the students (A)/ to have a thoroughly reading (B)/ of each chapter (C)/ mentioned in the syllabus. (D)

- A. 1
- B. 2
- C. 3
- D. 4
- E. No error

14. **Direction:** Read the sentence to find out whether there is any error in it. The error, if any, will be in one part of the sentence. If the given sentence is correct as it is, the answer is 'No error'. Ignore the errors of punctuation, if any.

The shortest boy of the school/ didn't hesitate to join/ the basketball team which/ was full of tall boys.

- A. The shortest boy of the school
- B. didn't hesitate to join
- C. the basketball team which
- D. was full of tall boys
- E. No error

15. **Direction:** Read the sentence to find out whether there is any error in it. The error, if any, will be in one part of the sentence. If the given sentence is correct as it is, the answer is 'No error'. Ignore the errors of punctuation, if any.

In such delicate matters,/ we often take/ his advice as he has/ been effectively handling such cases for a decade.

- A. In such delicate matters,
- B. We often take
- C. His advice as he has
- D. Been effectively handling such cases for a decade
- E. No error

16. **Direction:** A sentence with one blank is given, indicating that something has been omitted. Choose the word that best fits the blank appropriately.

As the festival approaches, the number of customers _____

- A. Will have increased
- B. Has increasing
- C. Will be increased
- D. Increases
- E. Increased

17. **Direction:** A sentence with one blank is given, indicating that something has been omitted. Choose the word that best fits the blank appropriately.

You will have to undergo a _____ of tests before the interview.

- A. Large
- B. Series
- C. Design
- D. Booklet
- E. Delegation

18. **Direction:** In the given question, a statement with a single blank is given. Choose the most effective word from the given options to complete the sentence meaningfully.

One has to be very _____ during the monsoons as the road becomes slippery.

- A. Smart
- B. Cautious
- C. Presentable
- D. Prepared
- E. Healthy

19. **Direction:** A sentence with one blank is given, indicating that something has been omitted. Choose the word that best fits the blank appropriately.

The judge used his _____ in settling the matter.

- A. Know
- B. Tactics
- C. Discretion
- D. Brains
- E. Bias

20. **Direction:** A sentence with one blank is given, indicating that something has been omitted. Choose the word that best fits the blank appropriately.

The Board members could not arrive at a _____ regarding the employee.

- A. Judgement
- B. Progress
- C. Policy
- D. Dissent
- E. Action

21. **Direction:** In the given question, a statement divided into different segments is given. The first segment is fixed, rearrange the other segments to form a coherent statement.

It was hard for the Afghans/ leading to the subtle plummeting of the morale (P)/ to withstand the wave after wave of enemy attacks (Q)/ their plight further worsened the situation (R)/ and the indifference of the allies towards (S)

- A. QSRP
- B. PQRS
- C. RQPS
- D. SRPQ
- E. RQSP

22. **Direction:** *In the given question, a statement divided into different segments is given. The first segment is fixed, rearrange the other segments to form a coherent statement.*

The federation was keen on maintaining an/ exclusive membership profile and thus introduced (P)/ segregational policies adopted by premier organizations (Q)/ an invite-only policy for the new entrants (R)/ causing a sudden outcry against the (S)

A. PRSQ B. SRPQ
C. PQRS D. QSRP
E. SQRP

23. **Direction:** *In the given question, a statement divided into different segments is given. The first segment is fixed, rearrange the other segments to form a coherent statement.*

Introduction of the finance bill was delayed/ budget allocation for the cottage (P)/ debating over the renewal of the last year's (Q)/ by a week as the lawmakers were busy (R)/ industry which got wasted (S)

A. PQRS B. SPQR
C. RQPS D. QRPS
E. RSQP

24. **Direction:** *In the given question, a statement divided into different segments is given. The first segment is fixed, rearrange the other segments to form a coherent statement.*

As the files were being arranged/ been lost for several decades now (P)/ which were believed to have (Q)/ into a stack, the butler cam (R)/ across information about several of the family heirlooms (S)

A. RSQP B. PQRS
C. SRQP D. QSRP
E. SPQR

25. **Direction:** *In the given question, a statement divided into different segments is given. The first segment is fixed, rearrange the other segments to form a coherent statement.*

The dissolution of the assembly/ in the state which was (P)/ was followed by a prolonged (Q)/ already marred with political instability (R)/ tug of war for seizing the power (S)

- A. RSPQ B. QSRP
C. PSRQ D. PRQS
E. PQRS

26. **Direction:** *In the given question, an idiom/phrase highlighted in bold is given in a sentence. Choose the most suitable meaning of the idiom/phrase.*

You must not waste your leisure time doing nothing, rather you should engage yourself in such activities that will **blow off steam** and recharge you for the future endeavours.

- A. Release surplus energy
B. Take steam bath
C. To make someone fidgety
D. To exercise the brain
E. To cause distress

27. **Direction:** *In the given question, an idiom/phrase highlighted in bold is given in a sentence. Choose the most suitable meaning of the idiom/phrase.*

I hope you **pardon my French** that I used during the serious and intense discussion we were having yesterday.

- A. Excuse my use of incorrect French
B. Excuse my inappropriate language
C. Excuse my untidiness
D. Excuse my behaviour
E. Excuse my tardiness

28. **Direction:** *In the given question, an idiom/phrase highlighted in bold is given in a sentence. Choose the most suitable meaning of the idiom/phrase.*

The teacher **looked over** my homework and found it very well put together.

- A. Watched B. Pioneered
C. Suspected D. Belittleed
E. Examined

29. **Direction:** *In the given question, an idiom/phrase highlighted in bold is given in a sentence. Choose the most suitable meaning of the idiom/phrase.*

I **heard it on the grapevine** that the vacancies are going to be increased this year for many posts.

- A. To hear some official news about something
- B. To inform people about something
- C. To acquire information by unofficial communication
- D. To be sure of something
- E. To deny a fact

30. **Direction:** *In the given question, an idiom/phrase highlighted in bold is given in a sentence. Choose the most suitable meaning of the idiom/phrase.*

The prisoners **broke out** of jail when the guards weren't looking.

- A. Raised
- B. Surrendered
- C. Escaped
- D. Perpetuated
- E. Considered

31. If each vowel of the word NICELY is changed to the next letter in the English alphabetical series and each consonant is changed to the previous letter in the English alphabetical series and then the alphabets are arranged in alphabetical order, which of the following will be fourth from the left?

- A. M
- B. J
- C. B
- D. O
- E. K

Direction (32-36): *The questions are based on the six three-digit numbers given below.*

648 384 296 444 763 521

32. If we change the first and second digit of each number then which of the following is third lowest (original number)?

- A. 384
- B. 444
- C. 648
- D. 763
- E. None of these

33. If in each number 2 is added to the first digit henceforth the first and third digits are interchanged, then which of the following is second largest (original number)?

- A. 444
- B. 296
- C. 763
- D. 521
- E. None of these

34. If all the numbers are arranged in ascending order then what is the difference between number which is third from the left and the number which is second from the right?

- A. 176
- B. 204
- C. 178
- D. 139
- E. None of these

35. If one is subtracted from all even digits then how many numbers have repetitive digits?

- A. One
- B. Two
- C. Three
- D. Four
- E. None of these

36. What is the resultant if the first digit from right side of the second highest number is divided by the second digit from right side of the fourth lowest number?

- A. One
- B. Two
- C. Three
- D. Four
- E. None of these

Direction (37-41): *Study the information given below and answer the questions based on it.*

Twelve people are sitting in two parallel rows containing six people each, in such a way that there is an equal distance between adjacent persons. In row 1, M, N, O, P, Q and R seated and all of them are facing south. In row 2, A, B, C, D, E and F are seated and all of them are facing north. Each member in row 1 is facing another member of row 2.

Two persons are sitting between M and N. Neither of them is at corner. The one who is facing D is neighbor of N. O is 2nd to the right of Q. O is not neighbor of N. The one who is facing O is 2nd to the left of F. More than two people sit between C and B. More than 2 people sit between E and the one who is facing M. The immediate neighbor of R is facing B. P is not sitting any extreme end of the line.

48. Who's lecture on Saturday?
 A. Jatin B. Lokesh
 C. Hitesh D. Mahesh
 E. None of these
49. Which of the following combinations is true according to the given information?
 A. Lokesh-Thursday-History
 B. Jatin-Wednesday-Chemistry
 C. Mahesh-Monday-History
 D. Ipsita-Friday-Economics
 E. None of these
50. What is true regarding Hitesh?
 A. History-Wednesday
 B. Economics-Friday
 C. Economics-Thursday
 D. Economics-Tuesday
 E. None of these
51. Who's lecture was on the last day ?
 A. Garima B. Ipsita
 C. Mahesh D. Hitesh
 E. None of these

Direction (52-54): Study the information given below and answer the questions based on it.

There are eight members i.e. A, B, C, D, E, F, G and H in the family. It is three generation family and two couples are in the family. Both parents of each child are alive. F is brother of D, who is father of E. H is aunt of G and daughter of C. B is mother of G. C is mother of F. G is a male. Equal number of males and females are there in the family.

52. How is E related to B?
 A. Father B. Brother
 C. Son D. Daughter
 E. Uncle
53. How is C related to B?
 A. Mother B. Sister-in-law
 C. Mother-in-law D. Aunt
 E. Sister
54. Which of the following doesn't belong to the group?
 A. A B. F
 C. D D. B
 E. G

Direction (55-57): Study the information given below and answer the questions based on it.

E is 9 m to the south of F. F is 5 m to the east of G. G is 4 m to the north of H. I is 3 m west of H. J is 7 m south of I. K is 8 m east of J.

55. If S is 5 m to the west of E, then what is the distance between H and S?
 A. 8 m B. 9 m
 C. 5 m D. 2 m
 E. 6 m
56. How far and in which direction is F from K?
 A. 11 m to the south
 B. 7 m to the north
 C. 11 m to the north
 D. 7 m to the south
 E. 11 m to the west
57. If T is 4m to south of F then who will be 8m to the west of T?
 A. I B. J
 C. H D. K
 E. None of these

Direction (58-60): Study the information given below and answer the questions based on it.

Among five persons – S, M, N, T and D each has different height. Only two persons are shorter than S. T is shorter than S but taller than D. The one who is the second tallest among them is of 175 cm.

58. Which of the following statement is definitely true with respect to the given information?
 A. D is definitely 175cm
 B. M is possibly 157cm
 C. T is shorter than S
 D. N is shorter than S
 E. None of the above
59. If height of M is 180 cm, then which of the following is the height of N?
 A. 177cm B. 157cm
 C. 155cm D. 170cm
 E. 175cm

60. How many persons are shorter than N?
 A. 2
 B. 3
 C. 4
 D. Cannot be determined
 E. 1
61. How many such pair of letters are there in the word 'TROUBLED' which have as many letters between them in the word as they have between them in the English alphabet?
 A. 2
 B. 3
 C. 4
 D. 5
 E. 1
62. **Direction:** *The question below consists of a question and two statements numbered I and II given below it. You have to decide whether the data provided in which of the statements are sufficient to answer the question. Choose your answer from the options based on this.*
 H is the mother of T. How is T related to W?
 I. W is the only daughter of H.
 II. W is the sister of T.
 A. The data in statement I alone are sufficient to answer the question, while the data in statement II alone are not sufficient to answer the question.
 B. The data in statement II alone are sufficient to answer the question, while the data in statement I alone are not sufficient to answer the question.
 C. The data either in statement I alone or in statement II alone are sufficient to answer the question.
 D. The data in both the statement I and II together are not sufficient to answer the question.
 E. The data in both statement I and II together are necessary to answer the question.
63. **Direction:** *The question below consists of a question and two statements numbered I and II given below it. You have to decide whether the data provided in which of the statements are sufficient to answer the question.*

Choose your answer from the options based on this.

Six persons Akhilesh, Bhavesh, Cindy, Divakar, Erika and Farheen are having different heights. Who among the following is the tallest person?
 I. Only two persons are taller to Bhavesh but only one person is shorter to Erika. Akhilesh is taller to Cindy but not the tallest.

II. Divakar is taller to Akhilesh but shorter to Farheen. Akhilesh is taller to Cindy but shorter to Bhavesh.

A. The data in statement I alone are sufficient to answer the question, while the data in statement II alone are not sufficient to answer the question.

B. The data in statement II alone are sufficient to answer the question, while the data in statement I alone are not sufficient to answer the question.

C. The data either in statement I alone or in statement II alone are sufficient to answer the question.

D. The data in both the statements I and II together are not sufficient to answer the question.

E. The data in both the statements I and II together are necessary to answer the question.

64. **Direction:** *The question below consists of a question and two statements numbered I and II given below it. You have to decide whether the data provided in which of the statements are sufficient to answer the question. Choose your answer from the options based on this.*

What is the code of "Actor"?

I. In a certain language, "road trip wine" is written as "bk mk tk" and "wine actor photo" is written as "gk rk bk".

II. In a certain language, "photo wine cycle" is written as "bk ak rk" and "cycle actor photo" is written as "gk ak rk".

A. The data in statement I alone are sufficient to answer the question, while the data in statement II alone are not sufficient to answer the question.

84. **Direction:** Each question contains Quantity I and Quantity II. Read the contents clearly and answer your questions accordingly.

Quantity I: if the length of a rectangle is increased by 20% while the breadth of the rectangle is decreased by 10% then find percentage change in area of the rectangle?

Quantity II: if the side of a triangle is increased by 30% while the height of a triangle is decreased by 20% then find the percentage change in area of the triangle?

- A. Quantity I > Quantity II
- B. Quantity I \geq Quantity II
- C. Quantity I < Quantity II
- D. Quantity I \leq Quantity II
- E. Quantity I = Quantity II or Relation cannot be established

85. **Direction:** Each question contains Quantity I and Quantity II. Read the contents carefully and answer your questions accordingly.

Quantity I: there are three numbers in the ratio 5:6:10. The sum of the largest and the smallest numbers is 126 more than the other number. Find the largest number?

Quantity II: 12% of first number is equal to 25 % second number. The difference of these two numbers is 78. Then find the largest number?

- A. Quantity I > Quantity I
- B. Quantity I \geq Quantity II
- C. Quantity I < Quantity II
- D. Quantity I \leq Quantity II
- E. Quantity I = Quantity II or Relation cannot be established

86. **Direction:** Each question contains Quantity I and Quantity II. Read the contents clearly and answer your questions accordingly.

Quantity I: 3 years ago the ratio of age of A and B is 3: 4 after 2 years the sum of their ages is 45. Then find the present age of A?

Quantity II: 5 years ago, the ratio of age of p and Q is 3: 4 P's age after 6 years is equal to the present age of Q. then find the present age of P?

- A. Quantity I > Quantity II
- B. Quantity I \geq Quantity II
- C. Quantity I < Quantity II
- D. Quantity I \leq Quantity II
- E. Quantity I = Quantity II or Relation cannot be established

87. **Direction:** Each question contains Quantity I and Quantity II. Read the contents clearly and answer your questions accordingly.

Quantity I: The SI on a certain sum of money for 3 years at 5% per annum is Rs 4800. Then the principle is?

Quantity II: The CI on a certain sum of money for 2 years at 6% per annum is Rs. 3708. Then the principle is?

- A. Quantity I > Quantity II
- B. Quantity I \geq Quantity II
- C. Quantity I < Quantity II
- D. Quantity I \leq Quantity II
- E. Quantity I = Quantity II or Relation cannot be established

88. **Direction:** Each question contains Quantity I and Quantity II. Read the contents clearly and answer your questions accordingly.

Quantity I: Vipin can swim at 6 km/hr in still water. The river flows at 3 km/hr and it takes 8 hours more upstream than downstream for the same distance. How far is the place?

Quantity II: A man can row 25 km/hr in still water and the river is running at 15 km/hr. if the man takes 2 hr to row to a place and back, how far is the place?

- A. Quantity I > Quantity II
- B. Quantity I \geq Quantity II
- C. Quantity I < Quantity II
- D. Quantity I \leq Quantity II
- E. Quantity I = Quantity II or Relation cannot be established

89. **Direction:** In the question, two equations I and II are given. You have to solve both the equations and give answer
 $x^2 - 11x + 28 = 0$
 $y^2 - 18y + 81 = 0$
 A. $x > y$ B. $x < y$
 C. $x = y$, or relation cannot be established between x and y
 D. $x \geq y$ E. $x \leq y$
90. $3x^2 - 14x + 16 = 0$
 $5y^2 - 16y + 12 = 0$
 A. $x > y$
 B. $x < y$
 C. $x = y$, or relation cannot be established between x and y
 D. $x \geq y$
 E. $x \leq y$
91. **Directions:** In each of these questions, two equations (I) and (II) are given.
 I. $2x^2 + 19x + 42 = 0$
 II. $4y^2 + 43y + 30 = 0$
 A. $x > y$ B. $x < y$
 C. $x \geq y$ D. $x \leq y$
 E. $x = y$ or no relation can be established between ' x ' and ' y '.
92. **Directions:** In each of the following questions two equations I and II are given. Solve both the equations and give answer:
 I. $x^2 + 2x - 195 = 0$
 II. $y^2 + 30y + 225 = 0$
 A. $x = y$ or relation can't be established between x and y
 B. $x > y$ C. $x < y$
 D. $x \geq y$ E. $x \leq y$
93. **Direction:** In the question given below, two equations are provided. Solve the equations and establish the relationship between x and y
I. $2x^2 - 13x - 189 = 0$
II. $2y^2 - 3y - 189 = 0$
 A. $x > y$ B. $x \geq y$
 C. $x < y$ D. $x \leq y$
 E. $x = y$ or the relationship cannot be established
94. Two number P & Q are 20 % and 28 % less than a number X. What is the percentage the number Q is smaller than the number P?
 A. 10% B. 23%
 C. 12% D. 13%
 E. 15 %
95. The ages of Sunil and Anil are in the ratio 8:7, after 6 years, the ratio of their ages will be 19 : 17. What is the difference in their present ages?
 A. 10 years B. 6 years
 C. 8 years D. 4 years
 E. 12 years
96. **Direction:** What should come in place of question mark (?) in the following question?
 $600 + 300 \div 15 = ? \times 31$
 A. 18 B. 25
 C. 40 D. 20
 E. 15
97. **Direction:** What should come in place of question mark (?) in the following question?
 $65\% \times 700 + \sqrt{196} - 9 \times 3 = ?$
 A. 522 B. 442
 C. 402 D. 362
 E. 592
98. **Direction:** What should come in place of question mark (?) in the following question?
 $41\% \text{ of } 600 - 250 = ? - 77\% \text{ of } 900$
 A. 889 B. 589
 C. 789 D. 689
 E. 489
99. **Direction:** What should come in place of question mark (?) in the following question?
 $12.5 \times 3.2 \times 8.8 = ?$
 A. 358 B. 355
 C. 354 D. 356
 E. None of these
100. **Direction:** What should come in place of question mark (?) in the following question?
 $52000 \div 40 \div 65 \times 30 = ? - \sqrt{400}$
 A. 580 B. 620
 C. 720 D. 780
 E. 480

Solutions

1. Ans. E.

According to the sixth paragraph of the passage, "Leaving aside the **tax receipts**, the other sources of the revenue which go into the Budget are the **dividends paid by the PSUs** on the government shareholdings, including the interim **dividends** and the **capital receipts** on account of the divestment of the government shareholdings." Thus, option E is the correct answer.

2. Ans. D.

Read the fourth paragraph carefully. Statement 1 as stated is the primary function of the Department of Revenue. On the other hand, statements 2 and 3 are the functions of the Department of Expenditure. Thus, option D is the correct answer.

3. Ans. A.

According to the seventh paragraph of the passage, "Revenue deficit indicates the excess of expenditure over receipts in the revenue budget of the government. Revenue deficit means the government is not able to finance its day to day expenses or what we call the current expenditure out of its normal revenue sources like taxes." Only option A can be inferred from this. Thus, option A is the correct answer.

4. Ans. C.

According to the third paragraph of the passage, "A very common reason people get into **serious debt** is by failing to live within their means. They **use credit to supplement their wants**, but eventually this will cause financial trouble." Hence, in order to fulfil their needs people tend to take credit and ultimately end up indebted. Thus, option C is the correct answer.

5. Ans. C.

According to the eighth paragraph of the passage, "In India, the central government's budget had a surplus until 1977. But in 1978 budget, revenue deficit appeared for the first time. Since then there is revenue deficit in all years and the government is borrowing to finance the revenue deficit." Clearly, option C is the correct answer.

6. Ans. B.

"To aid" means to give financial or material help. So, option B is the best-fit answer. Amplify- increase

7. Ans. D.

"Interim" means in or for the intervening period; provisional. Options B and C are synonyms of the word and A and E are irrelevant. "Permanent" is the word which best explains the opposite meaning of "interim". Thus, option D is the correct answer.

8. Ans. D.

The error lies in the 4th part of the sentence. The subject is 'the ruling party' which is singular; hence 'their' should be replaced by 'its' as their is a possessive pronoun for plural subjects and its is the possessive for singular subjects.

9. Ans. B.

The error lies in the second part of the sentence.

The correct usage for transfer is 'from.....to.....' and not 'through.....to.....'.

Hence, 'through' must be replaced with 'from'.

10. Ans. C.

The error lies in the third part of the sentence.

The word 'along' is unnecessary and must be omitted.

Along denotes accompaniment. The context of the sentence doesn't talk about accompaniment.

11. Ans. B.

The error lies in the second part of the sentence. The form V + -ing is called a *gerund* if it serves as a noun. In the given sentence "to" has been used as a preposition (in a prepositional phrase) and not an infinitive, thus, the gerund form "seeing" is correct. E.G. I look **forward to** meeting my relatives. Thus, option B is correct.

Here, 'used to' is used in the present tense to indicate that one has a habit of doing something.

12. Ans. C.

The error lies in the third part of the sentence.

Use of 'than' suggests that the sentence makes a comparison between two people. In such a case comparative degree is used before the adjective. Therefore, more should be written before knowledgeable.

13. Ans. B.

The error lies in the second part of the sentence.

Thoroughly should be replaced by thorough. Thoroughly has been derived the term thorough.

Thoroughly is used as an adverb and means in a thorough or complete manner. Thorough is used as an adjective and means carefully without missing or omitting any detail. The word reading has been used as a noun and should be qualified by an adjective.

14. Ans. A.

The error lies in the first part of the sentence.

After superlative adjectives, majorly two prepositions are used: of and in.

We use **in** with a singular word referring to a place or group.

Eg: I am the happiest woman in the world.

We use **of** before plurals, before time periods such as year/month.

Eg: Sunday is the best day of the week.

Here, in this case, the subject is the 'school', thus, it should be 'in the school'.

15. Ans. E.

There is no error in the sentence.

16. Ans. D.

The given sentence is in simple present tense and states a general fact, hence the latter half of the sentence with the blank will also be in the simple present tense. Since the subject in the latter part of the sentence is singular .i.e. 'the number', the verb will be followed accordingly.

Hence, option D is the correct answer.

17. Ans. B.

The trick here is to follow the structure of the statement. The blank is followed by 'of' and thus the blank will take a filler that can be followed grammatically by 'of' and also

manages to give a proper meaning.

On the basis of these filters, none of the options except option B makes any sense.

18. Ans. B.

'Cautious' can be used to make the sentence meaningful which means alert or be careful. The context of the statement is that of the monsoon season being a bit troublesome due to slippery roads which need to be navigated with care. 'Prepared' and 'smart' may appear to be true but we need to choose the most suitable response which in this case is 'cautious'.

Hence, 'cautious' is the correct answer.

19. Ans. C.

To settle a dispute, one needs to have a sound decision-making ability to be able to judge both the sides. Also, a judge is a free body to decide upon any issue.

'Know' is a verb which means to be aware of through observation, inquiry, or information.

'Tactics' refer to an action or strategy carefully planned to achieve a specific end. A judge doesn't need tactics to make a judgment.

'Discretion' means the freedom to decide what should be done in a particular situation.

'Brains' refer to the intellectual capacity.

'Bias' means inclination or prejudice for or against one person or group, especially in a way considered to be unfair.

Hence option C is the correct response.

20. Ans. A.

Judgement means the ability to make considered decisions or come to sensible conclusions.

Progress means advancement.

Policy means a strategy or an approach.

Dissent means lack of approval.

Action means activity.

The Board members are usually involved in making decisions. Hence, a word that conveys the related meaning should be used to fill the blank. No other word except judgement makes sense in the given context.

Hence, 'judgement' is the correct answer.

21. Ans. A.

Clearly, only segment Q fits after the first segment. This eliminates all the options except A.

Option B: It is incorrect because it ends in S which ends in 'towards' which can't be used to any statement.

Option C: It is incorrect for the same reason as option B.

Option D: 'towards their plight further worsened' makes no sense; hence it can be eliminated.

Option E: R is a clear misfit after the first segment; hence it can also be eliminated. Hence, the correct sequence is QSRP.

22. Ans. A.

'an' at the end of the first fixed segment indicates that Q, R and S can't follow the first segment.

This leaves us with only one choice i.e. P.

This eliminates options B, D, and E.

There are only two such options: option A and C.

Option C can be eliminated since part S ends with 'the' which can't be used as the end of the master statement.

Hence, the correct sequence is PRSQ.

23. Ans. C.

This question can be best solved by the elimination technique.

'was delayed budget allocation', 'was delayed industry which' and 'was delayed debating over' do not make sense; hence P, Q and S can't follow the first segment.

This eliminates options A, B and D.

Option E places S after R which makes the resultant segment as 'lawmakers were busy industry' which is illogical; hence option E can also be eliminated.

Hence, the correct sequence is RQPS.

24. Ans. A.

The most logical segment that can follow the first segment is R, 'being arranged into a stack'.

This leaves us with only one option i.e. option A.

Hence, the correct answer is RSQP.

25. Ans. D.

Clearly, R and S can't follow the first segment. This eliminates option A.

Option B: It is incorrect since P ends with was, which can't be used to end the statement.

Option C: It is incorrect since the statement can't end in 'by a prolonged'.

Option D: It makes a coherent statement; hence put it on hold.

Option E: It is incorrect because P ends in 'was' and Q begins with 'was'. Two 'was' can't be used together.

Hence, the correct sequence is PRQS.

26. Ans. A.

The idiom "blow off steam" means to express one's anger, usually noisily and harmlessly, thereby relieving one's tension. The above sentence states that one should not waste one's time and utilise it in releasing negative energies to get charged up. Only option A goes with this meaning, hence option A is correct.

27. Ans. B.

The phrase "pardon my French" is usually used humorously to denote an excuse for using taboo words or inappropriate words. The above sentence speaks of a person asking another person to excuse him for using inappropriate language during their discussion. Out of the given option, option B is correct.

28. Ans. E.

"Look over" means to examine something closely. The correct answer is option E.

Belittle means to undervalue someone or something.

Pioneer means to introduce or start.

29. Ans. C.

The idiom "to hear it on the grapevine" means to hear about something from informal communication or to hear a gossip.

The above sentence talks about the rumour that is spread about the number of vacancies for various posts. Hence, option C is correct.

30. Ans. C.

A forcible escape from a prison is called a breakout. The correct answer is option C. Perpetuate means to preserve or continue. Hence option C is the correct response.

31. Ans. E.

N I C E L Y
| | | | |
M J B F K X

Thus after arranging the letters as per English alphabetical series; we get;
M J B F K X

B F J **K** M X

Thus 4th letter from the left end will be K.

32. Ans. C.

648 384 296 444 763 521

468 834 926 444 673 251

After rearranging

926 834 673 468 444 251

Hence, option C is the correct response.

33. Ans. B.

648 384 296 444 763 521

848 485 694 446 369 127

After rearranging

848 694 485 446 369 127

Hence, option B is the correct response.

34. Ans. B.

648 384 296 444 763 521

After rearrangement.

296 384 444 521 648 763

648 - 444 = 204

35. Ans. C.

648 384 296 444 763 521

After rearrangement

537 373 195 333 753 511

Hence, C is the correct response.

36. Ans. D.

648 384 296 444 763 521

2nd highest number - 648

4th lowest number - 521

$8/2 = 4$

37. Ans. C.

All the persons are at the end except B.

- Two persons are sitting between M and N. Neither of them is at corner. The one who is facing D is neighbor of N.

Case 1A:

Row 1		N			M	
Row 2	D					

Case 1B:

Row 1		N			M	
Row 2			D			

Case 2A:

Row 1		M			N	
Row 2						D

Case 2B:

Row 1		M			N	
Row 2				D		

Take case 1A:

O is 2nd to the right of Q. O is not neighbor of N. The one who is facing O is 2nd to the left of F. More than two people sit between C and B it means at least 3 people sit between C and B from this cannot be possible so this case gets rejected.

Row 1		N		O	M	Q
Row 2	D					F

Take case 1B:

O is 2nd to the right of Q. O is not neighbor of N. The one who is facing O is 2nd to the left of F. More than 2 people sit between E and the one who is facing M so E must be at the left end. More than two people sit between C and B it means at least 3 people sit between C and B from this cannot be possible so this case gets rejected.

Row 1		N		O	M	Q
Row 2	E		D			F

Take case 2A:

O is 2nd to the right of Q. O is not neighbor of N. The one who is facing O is 2nd to the left of F. More than 2 people sit between E and the one who is facing M it means 3 people are between them but from this cannot be possible so this case gets rejected.

Row 1	O	M	Q		N	
Row 2			F			D

Take case 2B:

O is 2nd to the right of Q. O is not neighbor of N. The one who is facing O is 2nd to the left of F. More than 2 people sit between E and the one who is facing M so E must be at the right end. More than two people sit between C and B it means at least 3 people sit between C and B so either C or B at the left

end. P is not at any corner so P is facing D and R must be at the end. The immediate neighbor of R is facing B it means N is facing B and C must be at the end and A is facing M.

Here is the final arrangement:

Row 1	O	M	Q	P	N	R
Row 2	C	A	F	D	B	E

38. Ans. D.

D is facing P.

- Two persons are sitting between M and N. Neither of them is at corner. The one who is facing D is neighbor of N.

Case 1A:

Row 1		N			M	
Row 2	D					

Case 1B:

Row 1		N			M	
Row 2			D			

Case 2A:

Row 1		M			N	
Row 2						D

Case 2B:

Row 1		M			N	
Row 2				D		

Take case 1A:

O is 2nd to the right of Q. O is not neighbor of N. The one who is facing O is 2nd to the left of F. More than two people sit between C and B it means at least 3 people sit between C and B from this cannot be possible so this case gets rejected.

Row 1		N		O	M	Q
Row 2	D					F

Take case 1B:

O is 2nd to the right of Q. O is not neighbor of N. The one who is facing O is 2nd to the left of F. More than 2 people sit between E and the one who is facing M so E must be at the left end. More than two people sit between C and B it means at least 3 people sit between C and B from this cannot be possible so this case gets rejected.

Row 1		N		O	M	Q
Row 2	E		D			F

Take case 2A:

O is 2nd to the right of Q. O is not neighbor of N. The one who is facing O is 2nd to the left of F. More than 2 people sit between E and

the one who is facing M it means 3 people are between them but from this cannot be possible so this case gets rejected.

Row 1	O	M	Q		N	
Row 2			F			D

Take case 2B:

O is 2nd to the right of Q. O is not neighbor of N. The one who is facing O is 2nd to the left of F. More than 2 people sit between E and the one who is facing M so E must be at the right end. More than two people sit between C and B it means at least 3 people sit between C and B so either C or B at the left end. P is not at any corner so P is facing D and R must be at the end. The immediate neighbor of R is facing B it means N is facing B and C must be at the end and A is facing M.

Here is the final arrangement:

Row 1	O	M	Q	P	N	R
Row 2	C	A	F	D	B	E

39. Ans. D.

3 persons sit between O and N.

- Two persons are sitting between M and N. Neither of them is at corner. The one who is facing D is neighbor of N.

Case 1A:

Row 1		N			M	
Row 2	D					

Case 1B:

Row 1		N			M	
Row 2			D			

Case 2A:

Row 1		M			N	
Row 2						D

Case 2B:

Row 1		M			N	
Row 2				D		

Take case 1A:

O is 2nd to the right of Q. O is not neighbor of N. The one who is facing O is 2nd to the left of F. More than two people sit between C and B it means at least 3 people sit between C and B from this cannot be possible so this case gets rejected.

Row 1		N		O	M	Q
Row 2	D					F

Take case 1B:

O is 2nd to the right of Q. O is not neighbor of N. The one who is facing O is 2nd to the left of F. More than 2 people sit between E and the one who is facing M so E must be at the left end. More than two people sit between C and B it means at least 3 people sit between C and B from this cannot be possible so this case gets rejected.

Row 1		N		O	M	Q
Row 2	E		D			F

Take case 2A:

O is 2nd to the right of Q. O is not neighbor of N. The one who is facing O is 2nd to the left of F. More than 2 people sit between E and the one who is facing M it means 3 people are between them but from this cannot be possible so this case gets rejected.

Row 1	O	M	Q		N	
Row 2			F			D

Take case 2B:

O is 2nd to the right of Q. O is not neighbor of N. The one who is facing O is 2nd to the left of F. More than 2 people sit between E and the one who is facing M so E must be at the right end. More than two people sit between C and B it means at least 3 people sit between C and B so either C or B at the left end. P is not at any corner so P is facing D and R must be at the end. The immediate neighbor of R is facing B it means N is facing B and C must be at the end and A is facing M.

Here is the final arrangement:

Row 1	O	M	Q	P	N	R
Row 2	C	A	F	D	B	E

40. Ans. B.

R is 3rd to the left of Q.

- Two persons are sitting between M and N. Neither of them is at corner. The one who is facing D is neighbor of N.

Case 1A:

Row 1		N			M	
Row 2	D					

Case 1B:

Row 1		N			M	
Row 2			D			

Case 2A:

Row 1		M			N	
Row 2						D

Case 2B:

Row 1		M			N	
Row 2				D		

Take case 1A:

O is 2nd to the right of Q. O is not neighbor of N. The one who is facing O is 2nd to the left of F. More than two people sit between C and B it means at least 3 people sit between C and B from this cannot be possible so this case gets rejected.

Row 1		N		O	M	Q
Row 2	D					F

Take case 1B:

O is 2nd to the right of Q. O is not neighbor of N. The one who is facing O is 2nd to the left of F. More than 2 people sit between E and the one who is facing M so E must be at the left end. More than two people sit between C and B it means at least 3 people sit between C and B from this cannot be possible so this case gets rejected.

Row 1		N		O	M	Q
Row 2	E		D			F

Take case 2A:

O is 2nd to the right of Q. O is not neighbor of N. The one who is facing O is 2nd to the left of F. More than 2 people sit between E and the one who is facing M it means 3 people are between them but from this cannot be possible so this case gets rejected.

Row 1	O	M	Q		N	
Row 2			F			D

Take case 2B:

O is 2nd to the right of Q. O is not neighbor of N. The one who is facing O is 2nd to the left of F. More than 2 people sit between E and the one who is facing M so E must be at the right end. More than two people sit between C and B it means at least 3 people sit between C and B so either C or B at the left end. P is not at any corner so P is facing D and R must be at the end. The immediate neighbor of R is facing B it means N is facing B and C must be at the end and A is facing M.

Here is the final arrangement:

Row 1	O	M	Q	P	N	R
Row 2	C	A	F	D	B	E

41. Ans. C.

A and M are facing each other.

- Two persons are sitting between M and N. Neither of them is at corner. The one who is facing D is neighbor of N.

Case 1A:

Row 1		N			M	
Row 2	D					

Case 1B:

Row 1		N			M	
Row 2			D			

Case 2A:

Row 1		M			N	
Row 2						D

Case 2B:

Row 1		M			N	
Row 2				D		

Take case 1A:

O is 2nd to the right of Q. O is not neighbor of N. The one who is facing O is 2nd to the left of F. More than two people sit between C and B it means at least 3 people sit between C and B from this cannot be possible so this case gets rejected.

Row 1		N		O	M	Q
Row 2	D					F

Take case 1B:

O is 2nd to the right of Q. O is not neighbor of N. The one who is facing O is 2nd to the left of F. More than two people sit between E and the one who is facing M so E must be at the left end. More than two people sit between C and B it means at least 3 people sit between C and B from this cannot be possible so this case gets rejected.

Row 1		N		O	M	Q
Row 2	E		D			F

Take case 2A:

O is 2nd to the right of Q. O is not neighbor of N. The one who is facing O is 2nd to the left of F. More than two people sit between E and the one who is facing M it means 3 people are between them but from this cannot be possible so this case gets rejected.

Row 1	O	M	Q		N	
Row 2			F			D

Take case 2B:

O is 2nd to the right of Q. O is not neighbor of N. The one who is facing O is 2nd to the left of F. More than 2 people sit between E and the one who is facing M so E must be at the right end. More than two people sit between C and B it means at least 3 people sit between C and B so either C or B at the left end. P is not at any corner so P is facing D and R must be at the end. The immediate neighbor of R is facing B it means N is facing B and C must be at the end and A is facing M.

Here is the final arrangement:

Row 1	O	M	Q	P	N	R
Row 2	C	A	F	D	B	E

42. Ans. D.

Thus P lives on the 5th number floor.

8 th box	W
7 th box	Q
6 th box	V
5 th box	P
4 th box	T
3 rd box	R
2 nd box	U
1 st box	S

Hence Option D is correct.

43. Ans. A.

U lives exactly between the floors of R and S.

8 th box	W
7 th box	Q
6 th box	V
5 th box	P
4 th box	T
3 rd box	R
2 nd box	U
1 st box	S

Hence Option A is correct

44. Ans. C.

W lives on the topmost floor.

8 th box	W
7 th box	Q
6 th box	V
5 th box	P
4 th box	T
3 rd box	R
2 nd box	U
1 st box	S

Hence Option C is correct

45. Ans. B.

All the others occur at odd places except V which occurs at even place. Thus V does not belong to the group.

8 th box	W
7 th box	Q
6 th box	V
5 th box	P
4 th box	T
3 rd box	R
2 nd box	U
1 st box	S

Hence Option B is correct

46. Ans. E.

The solution to the above puzzle is: 4 persons that is V, P, T and R live between Q and U.

8 th box	W
7 th box	Q
6 th box	V
5 th box	P
4 th box	T
3 rd box	R
2 nd box	U
1 st box	S

Hence Option E is correct

47. Ans. C.

History taught by Garima on Monday. Mahesh teaches on Sunday but not Chemistry. The one who taught Economics teach on Tuesday and the one who taught Chemistry teach on Saturday. Kriti teaches on Wednesday. Ipsita teach History but not on Thursday. That means Ipsita teaches on Friday. Lokesh teaches Economics but neither on Tuesday nor on Saturday. That means Lokesh teaches on Thursday. Mahesh teaches on Sunday but not Chemistry. So chemistry will come on Wednesday. Hitesh did not teach Chemistry.

So the final arrangement is,

Garima	Monday	History
Hitesh	Tuesday	Economics
Ipsita	Friday	History
Jatin	Saturday	Chemistry
Kriti	Wednesday	Chemistry
Lokesh	Thursday	Economics
Mahesh	Sunday	History

48. Ans. A.

Garima	Monday	History
Hitesh	Tuesday	Economics
Ipsita	Friday	History
Jatin	Saturday	Chemistry
Kriti	Wednesday	Chemistry
Lokesh	Thursday	Economics
Mahesh	Sunday	History

49. Ans. E.

Garima	Monday	History
Hitesh	Tuesday	Economics
Ipsita	Friday	History
Jatin	Saturday	Chemistry
Kriti	Wednesday	Chemistry
Lokesh	Thursday	Economics
Mahesh	Sunday	History

50. Ans. D.

Garima	Monday	History
Hitesh	Tuesday	Economics
Ipsita	Friday	History
Jatin	Saturday	Chemistry
Kriti	Wednesday	Chemistry
Lokesh	Thursday	Economics
Mahesh	Sunday	History

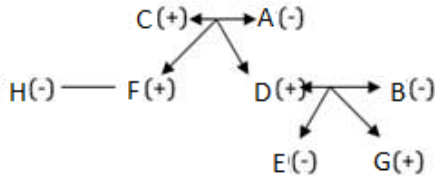
51. Ans. C.

Garima	Monday	History
Hitesh	Tuesday	Economics
Ipsita	Friday	History
Jatin	Saturday	Chemistry
Kriti	Wednesday	Chemistry
Lokesh	Thursday	Economics
Mahesh	Sunday	History

52. Ans. D.

C is mother of F. H is aunt of G and daughter of C. So H is sister of F. F is brother of D who is father of E. So D must have wife and C

must have husband and rest persons are not married as only two couples are in the family. B is mother of G and H is aunt of G so B must be wife. of D and then A is husband of C. As equal number of males and females are there in the family so E is female.

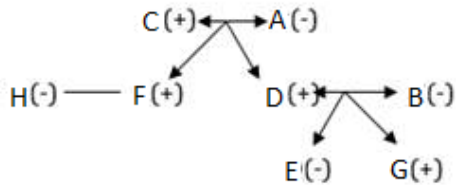


Q is daughter of N.

Hence, option D.

53. Ans. C.

C is mother of F. H is aunt of G and daughter of C. So H is sister of F. F is brother of D who is father of E. So D must have wife and C must have husband and rest persons are not married as only two couples are in the family. B is mother of G and H is aunt of G so B must be wife. of D and then **A is husband of C**. As equal number of males and females are there in the family so E is female.

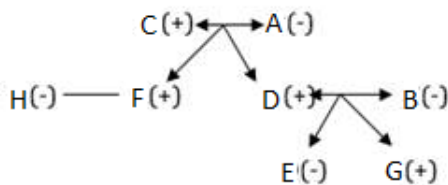


C is mother-in-law of B.

Hence, option C.

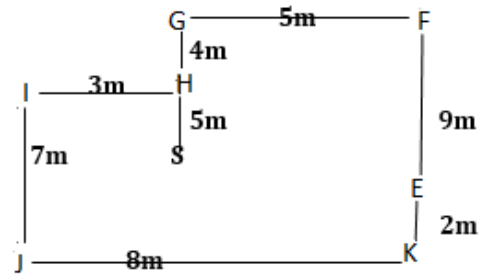
54. Ans. D.

C is mother of F. H is aunt of G and daughter of C. So H is sister of F. F is brother of D who is father of E. So D must have wife and C must have husband and rest persons are not married as only two couples are in the family. B is mother of G and H is aunt of G so B must be wife. of D and then **A is husband of C**. As equal number of males and females are there in the family so E is female.



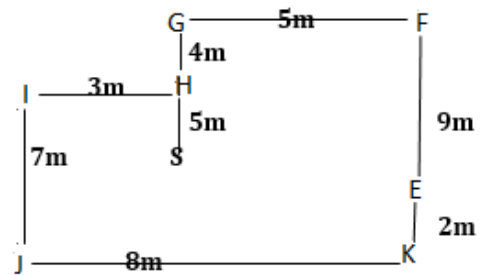
All the persons are male except N.
Hence, option D.

55. Ans. C.



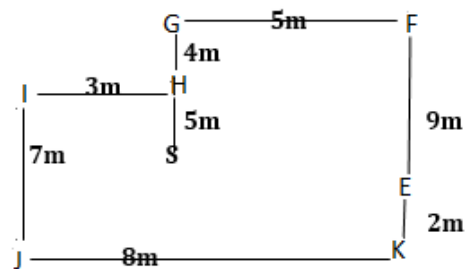
S will be west of E and south of H. The distance between S & H will be 5 m.

56. Ans. C.



F is 11 m north of K.

57. Ans. A.



If T is 4m south of F then it will be horizontally collinear with I & H. Point I will be 8m west of point T.

58. Ans. C.

Among five persons – S, M, N, T and D each has different height. Only two persons are shorter than S. T is shorter than S but taller than D. The one who is the second tallest among them is of 175 cm.

S > 2people

D < T < S < M/N < M/N

59. Ans. E.

Among five persons – Sonu, Monu, Nonu, Tonu and Donu each has different height. Only two persons are shorter than Sonu. Tonu is shorter than Sonu but taller than Donu. The one who is the second tallest among them is of 175 cm.

Sonu > 2people

$D < T < S < M/N < M/N$

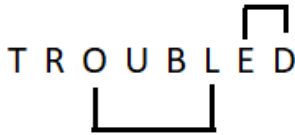
60. Ans. D.

Among five persons – Sonu, Monu, Nonu, Tonu and Donu each has different height. Only two persons are shorter than Sonu. Tonu is shorter than Sonu but taller than Donu. The one who is the second tallest among them is of 175 cm.

Sonu > 2people

$D < T < S < M/N < M/N$

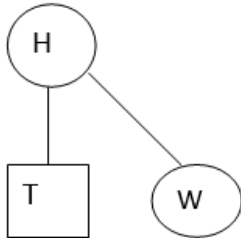
61. Ans. A.



Hence, there are two pairs.

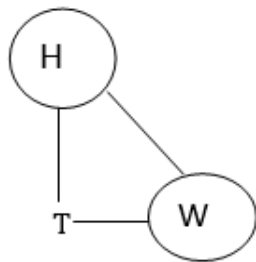
62. Ans. A.

I. W is the only daughter of H.



Since, W is the only daughter, so T is the son and T is the brother of W.

II. W is the sister of T.



So, T may be Sister or Brother of W,
So, data in Statement I alone are sufficient to answer the question.

63. Ans. E.

From I and II,

Only two persons are taller to B but only one person is shorter to E.

___ > ___ > Bhavesh > ___ > Erika > ___

Akhilesh is taller to Cindy but shorter to Bhavesh.

___ > ___ > Bhavesh > Akhilesh > Erika > Cindy

Divakar is taller to Akhilesh but shorter to Farheen.

Divakar > Farheen > Bhavesh > Akhilesh > Erika > Cindy

So, Statement I and II together are necessary to answer the question.

Hence, option E.

64. Ans. B.

From II,

cycle/photo = ak/rk

actor = gk

So, only II statement is sufficient.

Hence, option B.

65. Ans. D.

The first, the seventh, the ninth and the tenth letters of the word RECREATIONAL are R, T, O and N respectively. Meaningful word from these letters is only TORN. The third letter of the word is 'R'.

66. Ans. A.

Given number series -

18, 29, 42, 53, ?, 77

The pattern is as follows -

$18 + 11 = 29$

$29 + 13 = 42$

$42 + 11 = 53$

$53 + 13 = \mathbf{66}$

$66 + 11 = 77$

67. Ans. C.

Given number series -

36, 18, 6, 3, 1, ?

The pattern is as follows:

$36/2 = 18$

$18/3 = 6$

$6/2 = 3$

$3/3 = 1$

$1/2 = \mathbf{0.5}$

68. Ans. B.

Given number series

$$131 + 17 = 148$$

$$148 + 19 = 167$$

$$167 + 23 = 190$$

$$190 + 29 = 219$$

$$219 + 37 = 256$$

Here addition is based on

$$17 + 2 = 19, 19 + 4 = 23,$$

$$23 + 6 = 29, 29 + 8 = 37$$

69. Ans. E.

Given number 8, 6, 9, 23, ?

The pattern of given series is:

$$8 \times 1 - 2 = 6$$

$$6 \times 2 - 3 = 9$$

$$9 \times 3 - 4 = 23$$

$$23 \times 4 - 5 = \mathbf{87}$$

70. Ans. D.

Given number series

$$-1, 244, 163, 190, 181, ?$$

The pattern is as follows

$$1 + 243 = 244$$

$$244 - 81 = 163$$

$$163 + 27 = 190$$

$$190 - 9 = 181$$

$$181 + 3 = \mathbf{184}$$

71. Ans. B.

Total no. of students in these subjects

$$=(20\%+22\%+28\%) \text{ of } 3000=2100$$

$$\text{Average no. of students}=700$$

72. Ans. A.

$$\text{Economics appeared students } =75\% \text{ of } 20\% \text{ of } 3000=450$$

$$\text{Failed students}=20\% \text{ of } 450=90$$

73. Ans. D.

Required difference

$$=(20\%+28\%)-(22\%+15\%)=11\% \text{ of } 3000=330$$

74. Ans. C.

$$\text{Required difference}=\frac{(4-3)}{7} \text{ of } 28\% \text{ of } 3000=120$$

75. Ans. A.

$$\text{No. of male students } =80\% \text{ of } 15\% \text{ of } 3000+60\% \text{ of } 15\% \text{ of } 3000=630$$

76. Ans. D.

As per the **BODMAS** rule, the priority in which the operations should be done is:

Priority wise operations	Symbol
B-Bracket	()
O-Of	Of
D-Division	/, ÷
M-Multiplication	*, ×
A-Addition	+
S-Subtraction	-

Note: Addition and subtraction can be treated on same priority (from left to right) when they are in consecutive order.

$$? = 1234 + 2345 - 3456 + 4567$$

$$? = 3579 - 3456 + 4567$$

$$? = 123 + 4567$$

$$? = 4690$$

77. Ans. E.

As per the **BODMAS** rule, the priority in which the operations should be done is:

Priority wise operations	Symbol
B-Bracket	()
O-Of	Of
D-Division	/, ÷
M-Multiplication	*, ×
A-Addition	+
S-Subtraction	-

Note: Addition and subtraction can be treated on same priority (from left to right) when they are in consecutive order.

$$(115/5) + 12 \times 6 = ? + (64/4) - 35$$

$$23 + 72 = ? + 16 - 35$$

$$95 = ? - 19$$

$$95+19 = ?$$

$$? = 114$$

78. Ans. A.

$$\frac{45}{100} \times 400 + \sqrt{?} = \frac{56}{100} \times 750 - \frac{40}{100} \times 350$$

$$180 + \sqrt{?} = 420 - 140$$

$$180 + \sqrt{?} = 280$$

$$\sqrt{?} = 280 - 180$$

$$\sqrt{?} = 100$$

$$? = 100^2$$

$$? = 10000$$

79. Ans. B.

Distance travelled by boat in

$$\text{upstream}=24\text{km}$$

$$\text{Time taken} = 6 \text{ h}$$

$$\text{Speed of the boat in upstream} = \frac{24}{6} = 4 \text{ km/h}$$

And distance travelled by boat in downstream = 20 km
 Time taken = 4h
 Speed of the boat in downstream = 20/4 km/h = 5 km/h
 Now, speed of the boat in still water = 1/2 [speed of the boat in upstream + speed of the boat in downstream]
 = 1/2 [4 + 5] = 1/2 × 9 = 4.5 km/h
 And speed of the current = 1/2 [speed of the boat in downstream - speed of the boat in upstream] = 1/2 [5 - 4] = 1/2 × 1 = 0.5 km/h

80. Ans. D.

$$p = \frac{PX4X9}{100} - \frac{PX2X12}{100} = 480$$

$$= \frac{12p}{100} = 480$$

$$P=4000$$

81. Ans. A.

Total sum of age of 80 students of the class = 15 X 80 = 1200 years

15 students → 15 X 16 = 240 years

25 students → 25 X 14 = 350 years

Sum of 40 students = 590 years

Total age of remaining 40 students = 1200 - 590 = 610

So, average age = $\frac{610}{40} = 15.25$ years

82. Ans. D.

Clearly, If 60 % is equally divided then remaining 40% of total profit will be divided between 2 persons A and B in ratio of (profit of A) : (profit of B) = 12,500 : 8500 = 125 : 85 = 25:17

now difference in amount = 25-17 = 8

this difference = 240

therefore

$$40\% \text{ of total profit} = 240 \times \frac{(25+17)}{(25-17)} = 1260$$

$$\therefore 100\% \text{ profit} = 1260 / 40 \times 100 = 3150$$

83. Ans. D.

Ratio of length and breadth is 6 : 5

∴ Length = 6x

Breadth = 5x

$$\therefore \text{Area} = l \times b = 30x^2$$

$$\therefore \text{Perimeter} = 2(l + b)$$

$$= 2(6x + 5x)$$

$$= 22x$$

$$\therefore \frac{30x^2}{22x} = 60/11$$

$$\therefore X = 4$$

$$\therefore \text{Length} = 6x$$

$$= 6 \times 4 = 24 \text{ units}$$

84. Ans. A.

$$\text{Quantity I} = 20\% - 10\% - (20 \times 10 / 100)\% = +8\%$$

$$\text{Quantity II} = 30\% - 20\% - (30 \times 20 / 100)\% = +4\%$$

Hence Quantity I > Quantity II

85. Ans. C.

Quantity I = Let the three numbers will be 5x, 6x and 10x respectively

$$\text{ATQ } 10x + 5x - 6x = 126$$

$$9x = 126$$

$$X = 14$$

So largest number = 10x = 10 × 14 = 140

Quantity II = let x and y are two numbers

ATQ

$$12\% \text{ of } x = 25\% \text{ of } y$$

And their difference is 78

$$\text{So first no.} = 150$$

$$2^{\text{nd}} \text{ no.} = 72$$

Hence Quantity I < Quantity II

86. Ans. C.

Quantity I = Let 3 year ago the age of A and B be 3x and 4x respectively

Then

$$\text{ATQ } 3x + 5 + 4x + 5 = 45$$

$$X = 5$$

Hence present age of A = 3x + 3 = 18 year

Quantity II = Let 5 year ago the age of p and q be 3x and 4x respectively

Then ATQ

$$3x + 11 = 4x + 5$$

$$X = 6$$

Hence present age of P = 3x + 5 = 23

Hence Quantity I < Quantity II

87. Ans. A.

Quantity I = 15% of Principle = 4800

$$\text{Principle} = \text{Rs.} 32000$$

Quantity II = 12.36% of Principle = 3708

$$\text{Principle} = \text{Rs.} 30000$$

Hence Quantity I > Quantity II

88. Ans. A.

Quantity I: let d be the distance covered

ATQ

$$d/(6-3)-d/(6+3)=8$$

$$d=36\text{km}$$

Quantity II: ATQ

$$d/(25-15)+d/(25+15)=2$$

$$D=16\text{km}$$

Hence Quantity I > Quantity II

89. Ans. B.

$$x^2 - 11x + 28 = 0$$

$$x^2 - 7x - 4x + 28 = 0$$

$$x(x-7) - 4(x-7) = 0$$

$$(x-4)(x-7) = 0$$

$$x = 4, 7$$

$$y^2 - 18y + 81 = 0$$

$$y^2 - 9y - 9y + 81 = 0$$

$$y(y-9) - 9(y-9) = 0$$

$$(y-9)(y-9) = 0$$

$$y = 9, 9$$

So, $x < y$.

90. Ans. C.

$$3x^2 - 14x + 16 = 0$$

$$3x^2 - 6x - 8x + 16 = 0$$

$$3x(x-2) - 8(x-2) = 0$$

$$(3x-8)(x-2) = 0$$

$$x = 8/3 \text{ or } 2$$

$$5y^2 - 16y + 12 = 0$$

$$5y^2 - 10y - 6y + 12 = 0$$

$$5y(y-2) - 6(y-2) = 0$$

$$(5y-6)(y-2) = 0$$

$$y = 6/5 \text{ or } 2$$

Can't be determined.

91. Ans. E.

$$\text{I. } 2x^2 + 19x + 42 = 0$$

$$2x^2 + 12x + 7x + 42 = 0$$

$$2x(x+6) + 7(x+6) = 0$$

$$(2x+7)(x+6) = 0$$

$$x = -7/2, -6$$

$$\text{II. } 4y^2 + 43y + 30 = 0$$

$$4y^2 + 40y + 3y + 30 = 0$$

$$4y(y+10) + 3(y+10) = 0$$

$$(4y+3)(y+10) = 0$$

$$y = -3/4, -10$$

So answer is no relation.

92. Ans. D.

$$\text{I. } x^2 + 2x - 195 = 0$$

$$= (x+15)(x-13)$$

$$\Rightarrow x = -15, 13$$

$$\text{II. } y^2 + 30y + 225 = 0$$

$$= (y+15)(y+15)$$

$$\Rightarrow y = -15, -15$$

So $x \geq y$

93. Ans. E.

$$\text{I. } 2x^2 - 13x - 189 = 0$$

$$2x^2 - 27x + 14x - 189 = 0$$

$$x(2x-27) + 7(2x-27) = 0$$

$$x = -7, 27/2$$

$$\text{II. } 2y^2 - 3y - 189 = 0$$

$$2y^2 - 21y + 18y - 189 = 0$$

$$y(2y-21) + 9(2y-21) = 0$$

$$y = -9, 21/2$$

When x , as well as y , have both positive and negative values then **no relationship can be established** between them because if we consider x to be positive then the negative value of y will be lesser than x . If we consider x to be negative then positive value of y will be greater than x .

94. Ans. A.

Let the number X is 100

Then, P = 80

Q = 72

So, Percentage decrease from P to Q

$$\text{is } \frac{8-72}{80} \times 100 = 10\%$$

A is the right choice.

95. Ans. D.

suppose the ages of Sunil and Anil are $8x$ yr and $7x$ yr, respectively.

After 6 yr,

$$\frac{8x+6}{7x+6} = \frac{19}{17}$$

$$\frac{8x+6}{7x+6} = \frac{19}{17}$$

$$136x + 102 = 133x + 114$$

$$136x - 133x = 114 - 102$$

$$3x = 12$$

$$X = 12/3 = 4$$

$$\text{Age of Sunil} = 8x = 8 \times 4 = 32 \text{ yr}$$

$$\text{Present age Anil} = 7x = 7 \times 4 = 28 \text{ yr}$$

$$\text{Required difference} = (32 - 28) = 4 \text{ yr}$$

96. Ans. D.

As per the **BODMAS** rule, the priority in which the operations should be done is:

Priority wise operations	Symbol
B-Bracket	()
O-Of	Of
D-Division	/, ÷
M-Multiplication	*, ×
A-Addition	+
S-Subtraction	-

Note: Addition and subtraction can be treated on same priority (from left to right) when they are in consecutive order.

$$600 + (300/15) = ? \times 31$$

$$600 + 20 = ? \times 31$$

$$? = 620/31 = 20$$

97. Ans. B.

As per the **BODMAS** rule, the priority in which the operations should be done is:

Priority wise operations	Symbol
B-Bracket	()
O-Of	Of
D-Division	/, ÷
M-Multiplication	*, ×
A-Addition	+
S-Subtraction	-

Note: Addition and subtraction can be treated on same priority (from left to right) when they are in consecutive order.

$$65\% \times 700 + 14 - 9 \times 3$$

$$65 \times (700/100) + 14 - 27$$

$$455 + 14 - 27 = 442$$

98. Ans. D.

$$41\% \text{ of } 600 - 250 = ? - 77\% \text{ of } 900$$

$$\Rightarrow 246 - 250 = ? - 693$$

$$\Rightarrow 246 - 250 + 693 = ?$$

$$\Rightarrow ? = 689$$

99. Ans. E.

$$12.5 \times 3.2 \times 8.8 = 352$$

100. Ans. B.

$$52000 \div 40 \div 65 \times 30 = ? - \sqrt{400}$$

$$(52000 \div 40) \div 65 \times 30 = ? - 20$$

$$(1300 \div 65) \times 30 = ? - 20$$

$$20 \times 30 = ? - 20$$

$$600 = ? - 20$$

$$? = 620$$
