

## SBI Clerk Prelims Previous Year Question Paper 2021

**Directions (1-5):** Read each sentence to find out whether there is any grammatical or idiomatic error in it. The error, if any, will be in one part of the sentence. The number of that part is the answer. If there is no error the answer is (e). (Ignore errors of punctuation, if any.)

**Q1.** Despite of the rising share of (A) / the Delta variant, the overall incidence in (B)/ Germany has been steadily (C)/ declining in recent weeks (D)/

- (a) C
- (b) B
- (c) A
- (d) D
- (e) No Error

**Q2.** The recently discovery of hundreds of graves (A)/ in Canada has put the spotlight back (B)/ on its dark past, when indigenous people (C)/ faced systemic discrimination and violence (D)/

- (a) A
- (b) B
- (c) C
- (d) D
- (e) No Error

**Q3.** I would've gotten (A)/ a perfect score(B)/ accept I made (C)/ simple mistakes. (D)

- (a) D
- (b) C
- (c) B
- (d) A
- (e) No Error

**Q4.** He lifted the nest (A)/ gently and put it in a (B)/ safety place in the (C)/ forks of the tree. (D)/

- (a) A
- (b) D
- (c) C
- (d) B
- (e) No Error

**Q5.** Sometimes very terrible (A)/ accidents happens, (B)/ and many people are burned (C)/ and injured. (D)

- (a) D
- (b) C
- (c) B
- (d) A
- (e) No Error

**Directions (6-10):** In each of the questions given below a sentence is given with three words in bold. Choose the option which gives the correct sequence of these words to make the sentence grammatically and contextually correct.

**Q6.** His **culture (A)** manners and varied **pleasant(B)**, not less than his artistic skill, **contributed(C)** to render him popular.

- (a) ACB
- (b) BAC
- (c) CAB
- (d) BCA
- (e) No rearrangement required

**Q7.** It was **fairly (A)** **detrimental (B)** that his prison stay, especially during the pandemic, was **obvious (C)** to his well-being

- (a) ACB
- (b) BAC
- (c) CAB
- (d) BCA
- (e) No rearrangement required

**Q8.** To make matters worse, credible reports that some of the electronic evidence **malware (A)** in this case could have been **planted (B)** remotely by **gathered (C)** were never investigated.

- (a) ACB
- (b) BAC
- (c) CAB
- (d) CBA
- (e) No rearrangement required

**Q9.** We must understand mental health **conditions (A)** for what they are and for how they are **disadvantages (B)** with **associated (C)**.

- (a) ACB
- (b) BAC
- (c) CAB
- (d) BCA
- (e) No rearrangement required

**Q10.** Aviation websites are **infrastructure (A)** with reports of a rapid **abuzz (B)** of aviation **upgradation (C)** in Tibet.

- (a) ACB
- (b) BAC
- (c) CAB
- (d) BCA
- (e) No rearrangement required

**Directions (11-18):** Given below is a paragraph that has blank spaces. Corresponding to each blank, five options are given, out of which only one is appropriate. Choose the option that fits most suitably in the given blank making sentence grammatically and contextually correct.

Getting a good night's sleep is just as essential as a healthy diet and \_\_\_\_\_(11)\_\_\_\_\_ exercise. Unfortunately, according to the National Sleep Foundation, 62% of the American adult population \_\_\_\_\_(12)\_\_\_\_\_ from sleep issues every couple of nights per week.

Sleep deprivation negatively \_\_\_\_\_(13)\_\_\_\_\_ the quality of your life, as well as your overall health. In fact, multiple studies show that lack of \_\_\_\_\_(14)\_\_\_\_\_ sleep can negatively impact your hormones, exercise performance, brain functioning, and energy levels.

In addition, it can \_\_\_\_\_(15)\_\_\_\_\_ to moodiness, memory issues, and trouble thinking properly and focusing. Worse of all, \_\_\_\_\_(16)\_\_\_\_\_ sleep can cause high blood pressure, weight gain, and a weak immune system. In-depth studies also reveal that chronic poor sleepers are at a higher risk of developing cancer and dying from it.

If you're planning to \_\_\_\_\_(17)\_\_\_\_\_ your health, \_\_\_\_\_(18)\_\_\_\_\_ the quality of your sleep, and lose weight, you must get a good night's sleep.

**Q11.** (a) regular

- (b) system
- (c) seldom
- (d) active
- (e) unusual

**Q12.** (a) address

- (b) indicate
- (c) results
- (d) suffers
- (e) remarks

**Q13.** (a) affect

- (b) effect
- (c) impacts
- (d) observes
- (e) facilitate

**Q14.** (a) additional

- (b) adequate
- (c) advanced
- (d) anticipated
- (e) barely

**Q15.** (a) lead

- (b) indicated
- (c) consist
- (d) transformed
- (e) caused

**Q16.** (a) absolute

- (b) desperate
- (c) disability
- (d) emotional
- (e) chronic

**Q17.** (a) retrieval

- (b) estimate
- (c) optimize
- (d) decline
- (e) degrade

**Q18.** (a) lower

- (b) corrupt
- (c) aggregate
- (d) improve
- (e) impair

**Directions (19-23):** In the following question, sentences are given with a part in bold. The given phrase in the bold may or may not contain an error. The options following can replace the incorrect phrase. The correct phrase that is to be replaced will be your answer. If the sentences are correct then select 'No improvement required' as your answer.

**Q19.** The petition contended that the establishments and factories **were operates in violation of** environmental norms and affected public health.

- (a) has been operating in violation of
- (b) were operating in violation of
- (c) were operates in violation on
- (d) was operating in violation of
- (e) No improvement required

**Q20.** The Delhi Commission for Women (DCW) **was issued a notice to the police** regarding the same and sought a detailed action taken report.

- (a) had issued a notice to the police
- (b) have issue a notice to the police
- (c) has been issuing a notice to the police
- (d) has issue a notice to the police
- (e) No improvement required

**Q21.** Ravi was sent to Taloja Jail, where some of his co-accused **have now spend more than three years** without bail or trial.

- (a) have now spent more than three year
- (b) have now spend more then three years
- (c) have now spent more then three years
- (d) have now spent more than three years
- (e) No improvement required

**Q22. With technology becoming smarter,** there has been a corresponding increase in cyber fraud, harassments and threats.

- (a) On technology becoming smarter
- (b) At technology becoming smarter
- (c) On technology became smarter
- (d) With technology has become smarter
- (e) No improvement required

**Q23. A good coach had the skills** of his entire team accounted for, and knows where to put them for the best results.

- (a) have the skills
- (b) have a skill
- (c) has the skills
- (d) had skills
- (e) No improvement required

**Directions (24-30):** Read the following passage and answer the given questions below it with the help of the information provided in it.

Screaming is a unique noise. Research suggests when we scream in fear, the noise serves the dual purpose of sharpening our own focus in the face of a threat as well as of warning others. In fact, our brains process screams in a unique way. Most noises we hear are delivered from our ear to an area of the brain devoted to analyzing a sound and breaking it into its component parts, such as gender, age, and tone; high or low; a brass, stringed or electric instrument — or several combined; a ribbit or a coo, and what animal makes that sound. This **indicates** that we differentiate all the noises we hear everyday, even subconsciously.

A scream is different though, according to David Poeppel, PhD, a professor of psychology and neural science at New York University. Poeppel is the lead author of a 2015 study that looked into what happens in the body when people scream in fear. A scream goes straight from the ear to the amygdala, the part of the brain that processes fear and kickstarts the body's fight-or-flight response. The sound jolts our brains into increased alertness and analysis. This is especially true for screams when we're scared. These have a unique sound signature encompassed by the term "roughness." This roughness is what serves to alert others to danger. Humans and other animals scream for many reasons — in joy, in surprise, in fear. But we've evolved to be able to produce different shrieks and to be able to discern the difference when we hear them. (Incidentally, roughness is also why we find the sound of a baby crying and fingernails on chalkboards disturbing; both sounds have high roughness.) If we **focus on** the sounds that gain our attention, we will be able to tell which one is rough and which is not.

But what about people who have the opposite reaction when they're scared? What about the people who don't scream in fear, but become speechless in the face of a threat? This has been less studied, but it's likely a part of the third, overlooked response to terror: paralysis. Contrary to pop medicine, fight and flight aren't the only two reactions to something scary. Humans, like other animals, also evolved the option to freeze, or "play dead" in the face of a threat. This happens involuntarily, when the cerebellum, the part of the brain that regulates muscle activity, overpowers other terrified brain responses and basically shuts down all movement. Since screaming takes quite a few muscles (probably a little less than the 100 used for speaking), a person frozen in fear is rendered mute as well as immobile.

**Q24.** Choose the statement(s) which is/are TRUE based on the information given in the passage.

- (I) Our systems are built in a way that only allows us to scream in dangerous or threatening situations.
  - (II) One of the ways humans tackle fear is by going into a freeze mode and acting dead which is a similar action to animals.
  - (III) The brain sorts the noises we hear regularly on the basis of factors such as gender or high or low tone, age, etc.
- (a) Both II and III
  - (b) Both II and I
  - (c) Only III
  - (d) Both I and III
  - (e) Only I

**Q25.** According to the article, what contributes to alerting someone of the danger a person is in?

- (a) The gestures and expressions we make when we are confronted with a seemingly dangerous situation.
- (b) The scream one lets out when faced with danger holds an element of roughness which is crucial for letting others know of the possible danger.
- (c) Secretion of certain fluids and juices in our bodies by our organs play a part in accomplishing the above said thing.
- (d) The frequency of our screams, i.e., how often we shout in the given amount of time can alert others of the presence of danger.
- (e) None of the above

**Q26.** Among the following statements, choose option(s) which are FALSE in accordance with the information given in the passage.

- (I) The part of the brain that understands the fear of the situation and sends us into a full blown fight/flight response is called amygdala.
  - (II) The number of muscles used in the process of speaking are over 100.
  - (III) The purpose of a scream is to vent out your anger and release the emotions a person has been withholding inside.
- (a) Both I and II
  - (b) Only III
  - (c) Only II
  - (d) Only I
  - (e) Both II and III

**Q27.** Choose the option which states the reason for why some people go mute when they are scared.

- (a) The brain finds it hard to concentrate between how to combat the dangerous situation and figuring out how to talk which leaves a person mute.
- (b) Some people find that they don't want to express their feelings of terror and fright which is why they choose to remain quiet in those moments.
- (c) A certain part of the brain responsible for overlooking muscle activity takes over other responses of the brain and forces every movement of the body to shut down, including speech.
- (d) Being quiet has been found to help do away with the dangerous and harmful factors that a person might be facing at that exact moment.
- (e) None of the above

**Q28.** Among all the three responses to fear, how does a scream help us in possible dangerous situations?

- (a) The brain processes the scream in a part which helps activate our fight or flight mode which then helps us become aware and scan the situation.
- (b) Scream can notify the people in your surroundings like your neighbours or anybody in close vicinity to you.
- (c) When you scream, your vocal cords stretch and become flexible enough to scream louder and warn others of the situation.
- (d) None of the above
- (e) All of the above

**Q29.** Select the word which is similar in meaning to the highlighted word **INDICATES**.

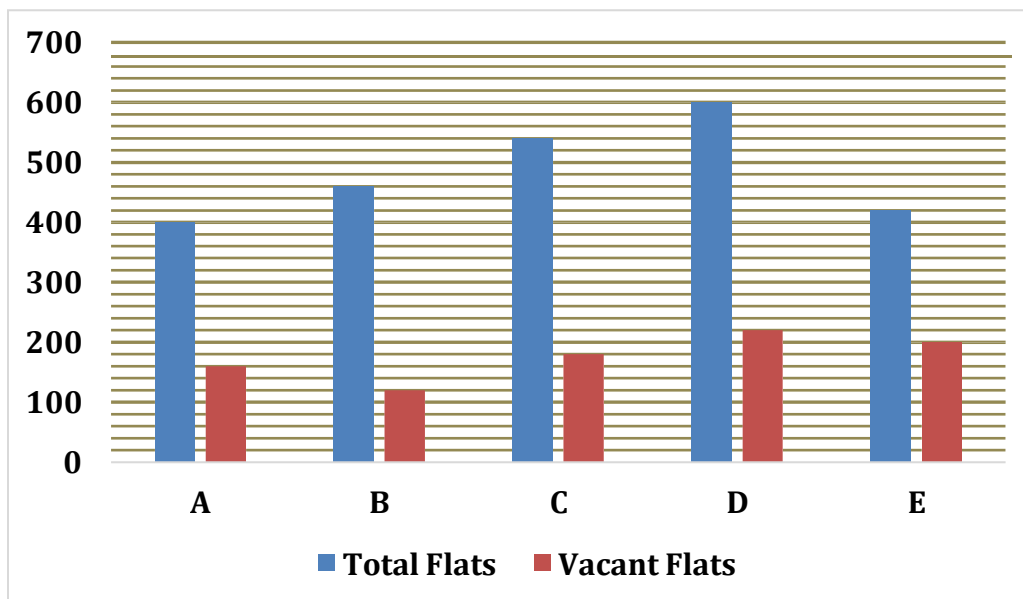
- (a) announces
- (b) signals
- (c) bargains
- (d) divides
- (e) flows

**Q30.** Choose the phrase which will replace the phrase '*focus on*' as highlighted in the passage.

- (a) drain out
- (b) tear apart
- (c) fire away
- (d) concentrate on
- (e) mix into

Direction (31-35): Read the data given below and answer the following questions.

The bar graph given below shows the total no. of flats and no. of vacant flats in five buildings.



Note – Total Flats = Vacant Flats + Occupied flats

Q31. No. of vacant flats in building C and D together are approximate what percentage of no. of occupied flats in building D and E together.

- (a) 60%
- (b) 84%
- (c) 67%
- (d) 55%
- (e) 80%

Q32. What is the respective ratio of occupied flats in building A and E together to vacant flats in C and D together?

- (a) 23 : 20
- (b) 17 : 19
- (c) 5 : 4
- (d) 11 : 17
- (e) 15 : 23

Q33. Average no. of vacant flats in building A and E is what percentage of occupied flats in building C.

- (a) 25%
- (b) 50%
- (c) 75%
- (d) 60%
- (e) 40%

Q34. Total flats in building B and D together are how much more or less than that in building A and C together.

- (a) 160
- (b) 180
- (c) 140
- (d) 120
- (e) 100

Q35. If 3 people live in each occupied flat of building A and 2 people live in each occupied flat of building B, then find total no. of people living in building A and B.

- (a) 1000
- (b) 1600
- (c) 1400
- (d) 1200
- (e) 1800

Directions (36-40): What will come in the place of the question mark (?) in the following number series?

Q36. 0.2, 2.7, 7.7, 15.2, ?, 37.7

- (a) 24.2
- (b) 30.2
- (c) 25.2
- (d) 21.2
- (e) 27.2



Q37. 15, 60, 210, 630, 1575, ?

- (a) 2450
- (b) 2700
- (c) 2550
- (d) 3150
- (e) 3250

Q38. 45, 49, 40, 65, 16, ?

- (a) 137
- (b) 121
- (c) 97
- (d) 143
- (e) 109

Q39. 4, 9, 28, ?, 566, 3397

- (a) 123
- (b) 113
- (c) 177
- (d) 141
- (e) 219

Q40. 22, 30, 41, 56, ?, 102

- (a) 74
- (b) 76
- (c) 72
- (d) 84
- (e) 86

Direction (41-45): the data given below shows the information of total students in class A, B and C which are divided in three groups X, Y and Z.

Class A: Total no. of students are 90. 30 students are in group X. ratio of number of students in group Y and Z is 1: 2.

Class B: Total no. of students are 80. The ratio of no. of students in group X, Y and Z is 8: 5: 3.

Class C: the no. of students in group Y are half of that in group X. The no of students in group X of class C are 20 more than that in group X of class A. no. of students in group Z of class C are 20% less than that in group X of same class.

Q41. What is the total no. of students in group Y of all the classes?

- (a) 95
- (b) 70
- (c) 120
- (d) 80
- (e) 60

Q42. No. of students in group X of class B are what percentage of no. of students in groups Y of class C.

- (a) 160%
- (b) 80%
- (c) 100%
- (d) 150%
- (e) 75%

Q43. There is total 34 girls in class A. If 12 girls are in group X, then find the no. of boys in group Y and Z together in class A.

- (a) 38
- (b) 34
- (c) 30
- (d) 32
- (e) 36

Q44. Total no. of students in group X is how much more or less than that in group Z.

- (a) 20
- (b) 25
- (c) 15
- (d) 50
- (e) 35

Q45. Find the respective ratio between average students in group X in class A and B to total students in class C.

- (a) 12: 17
- (b) 7: 23
- (c) 4: 21
- (d) 7: 12
- (e) 11: 16

Q46. Ratio between length of trains A and B is 3 : 5. Speed of train A is 72 km/h and that of train B is 54 km/h & they are running opposite to each other. If train A crosses train B in 16 seconds, then find length of train B.

- (a) 350 m
- (b) 250 m
- (c) 450 m
- (d) 150 m
- (e) 320 m

Q47. The perimeter of circle of radius 28 cm is 32 cm more than perimeter of square. Find the area of the square.

- (a) 1225
- (b) 1296
- (c) 1156
- (d) 1089
- (e) 1444

Q48. A boat in upstream can travel 5 km in 30 minutes. If the speed of the stream is 1.5 kmph, then find the total distance cover by the boat when boat takes 46 hours to travel from A to b then return to B.

- (a) 260 km
- (b) 220 km
- (c) 280 km
- (d) 520 km
- (e) 144 km

Q49. Difference of the interest received when a sum is invested at 15% p.a. at SI for two years and the interest received when that sum is invested at 20% p.a. for one year compounded half yearly is Rs 432, find the sum?

- (a) Rs. 5400
- (b) Rs. 5000
- (c) Rs. 4500
- (d) Rs. 4000
- (e) Rs. 4800

Q50. In an election only two candidates participate. Candidate 'P' got 50% less votes than 'Q'. Had Q got 200 votes less there would have been a tie. What is the 8 times of the number of total votes polled.

- (a) 800
- (b) 7200
- (c) 3200
- (d) 9600
- (e) 3600

Q51. A pen was marked up by 50% above cost price and allowed Rs 100 discount on marked price. If shopkeeper still made a profit of Rs. 100, then find the selling price of the pen (in Rs.)?

- (a) 450 Rs.
- (b) 600 Rs.
- (c) 500 Rs.
- (d) 400 Rs.
- (e) 350 Rs.

Q52. A container contains total 120 liters mixture of milk and water in which quantity of water is 20 liters. If 36 liters mixture taken out from container and 6 liters milk added, then find quantity of water in what percent (approximate) less than that of milk in final mixture?

- (a) 82%
- (b) 88%
- (c) 78%
- (c) 86%
- (e) 90%

Q53. A and B starts a partnership business by investing Rs. 35000 & Rs. 40000 respectively. After six months C joined them and at the end of year profit share of C is Rs. 9000 out of total profit of Rs. 39000. Find the investment of C?

- (a) 54000 Rs.
- (b) 36000 Rs.
- (c) 60000 Rs.
- (d) 45000 Rs.
- (e) 40000 Rs.

Q54. Pipe A & pipe B together can fill half of a tank in 7 hours, while pipe C can empty 40% of the same tank in  $x$  hours. When all three pipes open together in same empty tank, then it completely filled in  $26\frac{1}{4}$  hours.

Find value of  $x$ ?

- (a) 18
- (b) 12
- (c) 16
- (d) 24
- (e) 9

Q55. Average of present age of A & B is 30 years and C is four years older than A. Four years ago ratio of age of A to C was 3 : 4. Find the sum of ages of A, B & C five years hence will be?

- (a) 85 years
- (b) 95 years
- (c) 90 years
- (d) 105 years
- (e) 75 years

Directions (56-65): - What will come in place of (?) question mark in the following questions.

Q56.  $512 \div ? \times 6 = 192$

- (a) 11
- (b) 18
- (c) 12
- (d) 16
- (e) None of these

Q57.  $(48\% \text{ of } 625) \div 0.75 = ?$

- (a) 800
- (b) None of these
- (c) 40
- (d) 4000
- (e) 400

Q58.  $65\% \text{ of } 480 - ? + 175 = 350$

- (a) 125
- (b) 129
- (c) 137
- (d) 147
- (e) 153

Q59.  $45 + 20\% \text{ of } ? = \frac{460}{4}$

- (a) 250
- (b) 450
- (c) 400
- (d) 350
- (e) 360

Q60.  $(4)^? \times 2 = \frac{(16)^2}{\sqrt[4]{16}}$

- (a) 2
- (b) 3
- (c) 4
- (d) 1
- (e) None of these

Q61.  $4 \times (? + 120) = (8)^3$

- (a) 6
- (b) 12
- (c) 8
- (d) 4
- (e) 16

Q62.  $\frac{56}{?} + (8)^3 = 13\% \text{ of } 4000$

- (a) 7
- (b) 8
- (c) 14
- (d) 28
- (e) None of these

Q63.  $4\frac{3}{12} + 1\frac{3}{4} - ? = \sqrt[3]{64}$

- (a)  $\frac{5}{2}$
- (b)  $1\frac{1}{2}$
- (c) 1
- (d) 4
- (e) 2

Q64.  $756 \div 14 \times 5 - \sqrt{7921} = ?$

- (a) 183
- (b) 179
- (c) 178
- (d) 181
- (e) 187

Q65.  $462 \div 5.25 + 24 \times 12 = ?$

- (a) 372
- (b) 390
- (c) 376
- (d) 370
- (e) 400

**Directions (66-70):** Study the following information to answer the given questions:

Eight persons sit around a circular table. All of them face inside. F sits third to the right of E. Only one person sits between H and F. A sits opposite to D. C sits third to the left of G. C is not an immediate neighbor of B. D is not an immediate neighbor of H. G is an immediate neighbour of E.

**Q66.** Who among the following sits opposite to G?

- (a) H
- (b) B
- (c) D
- (d) F
- (e) None of these

**Q67.** Who among the following sits second to the left of the one who sits third to the right of H?

- (a) B
- (b) D
- (c) A
- (d) E
- (e) None of these

**Q68.** What is the position of C with respect to D?

- (a) Third to the right
- (b) Second to the right
- (c) Immediate left
- (d) Second to the left
- (e) None of these

**Q69.** Who among the following person sit third to the left of A?

- (a) F
- (b) B
- (c) G
- (d) C
- (e) None of these

**Q70.** Which of the following statement is true about H?

- (a) H sits second to the left of F
- (b) H faces B
- (c) D sits third to the right of H
- (d) E is not an immediate neighbor of H
- (e) Both (b) and (d)

**Directions (71-73):** In each of the questions below are given some statements followed by some conclusions. You have to take the given statements to be true even if they seem to be at variance with commonly known facts. Read all the conclusions and then decide which of the given conclusions logically follows from the given statements, disregarding commonly known facts. Give answer

**Q71. Statements:**

All Cloud are Rain.

Only a few Cloud are Water.

**Conclusions:**

**I.** Some Water is Rain

**II.** All Rain is Water

(a) Both I and II follow

(b) Either I or II follows

(c) Only II follows.

(d) Only I follows.

(e) Neither I nor II follows

**Q72. Statements:**

Only a few Apple is Mango.

Some Mango is Guava.

**Conclusions:**

**I.** All Guava is Apple

**II.** Some Guava is not Apple

(a) Both I and II follow

(b) Either I or II follows

(c) Only II follows.

(d) Only I follows.

(e) Neither I nor II follows

**Q73. Statements:**

All Green is Blue.

All Blue is Yellow.

No Blue is Pink.

**Conclusions:**

**I.** No Green is Pink

**II.** Some Yellow is not pink

(a) Both I and II follow

(b) Either I or II follows

(c) Only II follows.

(d) Only I follows.

(e) Neither I nor II follows

**Q74.** How many pairs of letters are there in the word 'CONDITION', each of which have as many letters between them (both forward and backward direction) in the word as they have between them according to English alphabetical order?

- (a) None
- (b) Two
- (c) Four
- (d) Three
- (e) None of these

**Directions (75-79):** Study the following arrangement carefully and answer the questions given below.

@ E K & Y R © C A M ® U L \$ V Q # P % S I W \* O T ϕ G

**Q75.** If all consonants are replaced its next letter, then how many alphabets are repeated in the new arrangement?

- (a) Four
- (b) One
- (c) Three
- (d) Two
- (e) None

**Q76.** How many such symbols are there in the above arrangement each of which is immediately preceded by a consonant but not immediately followed by a Vowel?

- (a) None
- (b) Four
- (c) Two
- (d) Three
- (e) More than Four

**Q77.** Four of the following five are alike in a certain way based on their position in the above arrangement and so form a group. Which is the one that does not belong to that group?

- (a) ER&
- (b) CUM
- (c) L#V
- (d) PW%
- (e) SOW

**Q78.** How many such alphabets are there in the above arrangement each of which is immediately preceded and immediately followed by a symbol?

- (a) None
- (b) One
- (c) Two
- (d) Three
- (e) More than three



**Q79.** Which of the following element is 10<sup>th</sup> to the right of the element which is 18<sup>th</sup> from the right end?

- (a) #
- (b) P
- (c) %
- (d) S
- (e) None of these

**Q80.** If we form a meaningful word by the 3<sup>rd</sup>, 4<sup>th</sup>, 7<sup>th</sup> and 8<sup>th</sup> letter of the word 'CONSISTENT', then which of the following will be the first letter of the word thus formed. If more than one word is formed mark Y as your answer. If no meaningful word is formed, mark X as your answer?

- (a) X
- (b) N
- (c) Y
- (d) S
- (e) E

**Directions (81-85):** Study the following information carefully and answer the questions given below. Eight persons A, B, C, D, E, F, G and H sit in a row facing to the north direction but not necessarily in the same order.

B sits 3<sup>rd</sup> from the right end. Three persons sit between H and B. D is the only neighbour of F. E sits immediate left of G, who sits 2<sup>nd</sup> to the right of A.

**Q81.** Who among the following sits 2<sup>nd</sup> to the left of F?

- (a) B
- (b) H
- (c) A
- (d) D
- (e) None of these

**Q82.** Which of the following statement is true as per the given information?

- (a) Two persons sit between E and D
- (b) A sits immediate right of C
- (c) C sits at one of the extreme ends
- (d) Both (a) and (c)
- (e) All are true

**Q83.** Four of the following five are alike in a certain way and so form a group. Find the one who does not belong to that group?

- (a) C
- (b) H
- (c) G
- (d) A
- (e) B

**Q84.** Who among the following are immediate neighbours of G?

- (a) F
- (b) C
- (c) B
- (d) E
- (e) Both (c) and (d)

**Q85.** What is the position of D with respect to G?

- (a) 3<sup>rd</sup> to the left
- (b) Immediate left
- (c) 2<sup>nd</sup> to the right
- (d) 3<sup>rd</sup> to the right
- (e) None of these

**Q86.** Five persons A, B, C, D and E arranged in a row. One person sits between A and B. One person sits between A and D. C sits 3<sup>rd</sup> to the right of D. What is the position of A with respect to E?

- (a) Immediate right
- (b) 2<sup>nd</sup> to the left
- (c) Immediate left
- (d) 3<sup>rd</sup> to the right
- (e) None of these

**Directions (87-89):** Study the following information carefully and answer the questions given below. Point A is in 8m north of point B. Point C is in 4m east of point B. Point D is in 5m south of point C. Point F is in 5m north of Point E, which is 8m east of point D. Point F is in 4m west of point G. Point H is in 8m north of Point G.

**Q87.** What is the shortest distance between Point A and Point H?

- (a) 12m
- (b) 14m
- (c) 16m
- (d) 18m
- (e) None of these

**Q88.** What is the direction of Point H with respect to Point D?

- (a) North-east
- (b) North
- (c) South-east
- (d) North-west
- (e) None of these

**Q89.** What is the shortest distance between Point F and Point C?

- (a) 5m
- (b) 8m
- (c) 10m
- (d) 12m
- (e) None of these

**Directions (90-93):** Study the following information to answer the given questions:

Eight boxes are placed one above the other in a stack. Not more than two boxes are placed above box Q. Three boxes are placed between box Q and T. Two boxes are placed between box U and S, which is placed below box T. Box U does not place immediate above box T. Box P is placed immediate above box V. Box R is placed above box W but does not place above box V.

**Q90.** Which of the following box is placed immediate above box W?

- (a) S
- (b) T
- (c) Q
- (d) U
- (e) None of these

**Q91.** How many boxes are placed between P and R?

- (a) Four
- (b) One
- (c) Two
- (d) Three
- (e) None of these

**Q92.** The number of boxes are placed between Q and W is same as the number of boxes are placed between\_ and\_?

- (a) P, Q
- (b) V, U
- (c) R, S
- (d) W, T
- (e) None of these

**Q93.** Which of the following box is placed immediate below box S?

- (a) V
- (b) R
- (c) P
- (d) W
- (e) None

**Directions (94-96):** In each of the questions below are given some statements followed by two conclusions. You have to take the given statements to be true even if they seem to be at variance with commonly known facts. Read all the conclusions and then decide which of the given conclusions logically follows from the given statements disregarding commonly known facts.

- (a) If only conclusion I follows.
- (b) If only conclusion II follows.
- (c) If either conclusion I or II follows.
- (d) If neither conclusion I nor II follows.
- (e) If both conclusions I and II follow.

**Q94. Statements:**  $M < N \leq O < R = S < T$

**Conclusion I:**  $M = O$       **II:**  $N < S$

**Q95. Statements:**  $C \geq D = E \leq F < G \leq H$

**Conclusion I:**  $C \geq F$       **II:**  $F > C$

**Q96. Statements:**  $S > U \geq V = W \leq X; W \leq Y \leq Z$

**Conclusion I:**  $S > W$       **II:**  $U \geq Y$

**Direction (97-100):** Study the following information carefully and answer the questions given below. Ten persons sit in two parallel rows containing 5 persons in each row in such a way that there is an equal distance between adjacent persons. In the 1<sup>st</sup> row P, Q, R, S and T sit and all of them face south. In the 2<sup>nd</sup> row A, B, C, D and E sit and all of them face north but not necessarily in the same order.

Two persons sit between E and D, who sits diagonally opposite to S. E faces Q, who sits 3<sup>rd</sup> to the right of R. C faces P but not an immediate neighbour of D. B sits to the left of A.

**Q97.** What is the position of D with respect to A?

- (a) Immediate left
- (b) 3<sup>rd</sup> to the right
- (c) Immediate right
- (d) 2<sup>nd</sup> to the left
- (e) None of these

**Q98.** Who among the following faces to T?

- (a) A
- (b) D
- (c) B
- (d) Either (a) or (c)
- (e) None of these

**Q99.** Four of the following five are alike in a certain way and so form a group. Find the one who does not belong to that group?

- (a) T
- (b) Q
- (c) C
- (d) B
- (e) P

**Q100.** How many persons sit between Q and T?

- (a) One
- (b) Three
- (c) None
- (d) Two
- (e) None of these

## Solutions

### S1. Ans.(c)

**Sol.** The correct choice is option (c). In part (A), 'despite of' is incorrect as 'despite' is never followed by 'of'.

### S2. Ans.(a)

**Sol.** The error lies in part (A) of the sentence. Here 'recently' should be 'recent' as we need adjective here while 'recently' is adverb.

### S3. Ans.(b)

**Sol.** The error lies in part (C). Here 'accept' should be 'except'. Accept is contextually incorrect in the given sentence.

accept means to agree to take something that somebody offers you

except means not including somebody/something; apart from the fact that

### S4. Ans.(c)

**Sol.** The error lies in part (C). Here 'safety' should be 'safe' as we need an adjective here for the noun 'place'.

### S5. Ans.(c)

**Sol.** The error lies in part (B). Here 'happens' should be replaced by 'happen' as to comply with the rule of subject verb agreement, we need plural verb for the plural subject (accidents).

### S6. Ans.(b)

**Sol.** The correct sequence of words is BAC. Therefore the correct sentence will be "His pleasant manners and varied culture, not less than his artistic skill, contributed to render him popular."

### S7. Ans.(a)

**Sol.** The correct sequence is ACB. Therefore the correct sentence will be "It was fairly obvious that his prison stay, especially during the pandemic, was detrimental to his well-being"

### S8. Ans.(d)

**Sol.** The correct sequence is CBA. Therefore the correct sentence will be "To make matters worse, credible reports that some of the electronic evidence gathered in this case could have been planted remotely by malware were never investigated"

**S9. Ans.(a)**

**Sol.** The correct sequence is ACB. Therefore the correct sentence will be “We must understand mental health conditions for what they are and for how they are associated with disadvantages”

**S10. Ans.(d)**

**Sol.** The correct sequence is BCA. Therefore the correct sentence will be “Aviation websites are abuzz with reports of a rapid upgradation of aviation infrastructure in Tibet.”

**S11. Ans.(a)**

**Sol.** The paragraph illustrates the importance of sleep just as nutrition and exercise is to maintain a healthy body and mind. Therefore, the most suitable word for the given blank is ‘regular’ as it contributes to the theme of the passage about addressing healthy sleep routines.

Regular- recurring at uniform intervals.

System- a set of things working together as parts of a mechanism or an interconnecting network; a complex whole.

Seldom- not often; rarely

active- engaging or ready to engage in physically energetic pursuits.

Unusual- not habitually or commonly occurring or done.

**S12. Ans.(d)**

**Sol.** The given sentence contributes to the central theme of the paragraph which is about healthy sleeping habits by providing a statistical data of adults experiencing sleeping issues. Thus, the most suitable word for the given blank is ‘suffers’. All the other words are either grammatically or contextually incorrect.

Suffers- experience or be subjected to (something bad or unpleasant).

Address- think about and begin to deal with (an issue or problem).

Indicate- point out; show.

Results- a favourable outcome of an undertaking or contest.

Remarks- say something as a comment; mention.

**S13. Ans.(c)**

**Sol.** The given paragraph mentions the harmful repercussions of sleep deprivation. Therefore, the most suitable word for the given blank is ‘impacts.’

Impacts- a marked effect or influence.

Affect- Affect is usually a verb, and it means to impact or change.

Effect- Effect is usually a noun that you would use to indicate the result of a change.

Observes- notice or perceive (something) and register it as being significant.

Facilitate- make (an action or process) easy or easier.

**S14. Ans.(b)**

**Sol.** The most suitable word for the given blank is adequate which means 'satisfactory or acceptable in quality or quantity' as the passage refers to the harmful impacts on quality of life due to deprived sleep. All the other words are contextually incorrect.

Additional- added, extra, or supplementary to what is already present or available

Advanced- modern and recently developed.

Anticipated- regard as probable; expect or predict.

Barely- only just; almost not.

**S15. Ans.(a)**

**Sol.** A Modal verb is followed by another verb in the base form. Since 'can' is a modal verb, the main verb should be in its base form. This shortlists our options to 'lead' and 'consist'. Lead means cause (a person or animal) to go with one by holding them by the hand, a halter, a rope, etc. while moving forward; while consist means be composed or made up of. Hence, 'lead' is the most suitable word.

Indicated- point out; show.

Transformed- make a marked change in the form, nature, or appearance of.

Caused- make (something, especially something bad) happen.

**S16. Ans.(e)**

**Sol.** The given sentence of the passage mentions the conditions which further aggravate the condition of sleep deprivation. Thus, the most suitable word for the given blank is 'chronic' which means (of an illness) persisting for a long time or constantly recurring.

Absolute- not qualified or diminished in any way; total.

Desperate- (of an act) tried in despair or when everything else has failed.

Disability- a physical or mental condition that limits a person's movements, senses, or activities.

Emotional- relating to a person's emotions.

**S17. Ans.(c)**

**Sol.** The passage mentions that chronic sleep deprivation leads to all sorts of negative effects on physical and social well-being. Hence, it is concluded by advising the readers to improve the quality of sleep if one wants to achieve a healthy lifestyle. Therefore the most suitable word for the given blank is 'optimize'.

Optimize- make the best or most effective use of (a situation or resource).

Retrieval- the process of getting something back from somewhere.

Estimate- roughly calculate or judge the value, number, quantity, or extent of.

Decline- diminish in strength or quality; deteriorate.

Degrade- lower the quality of; cause to deteriorate.

**S18. Ans.(d)**

**Sol.** The most suitable word for the given blank is 'improve' which means make or become better. All the other words are contextually incorrect.

Lower- less high in position.

Corrupt- evil or morally depraved.

Aggregate- a whole formed by combining several separate elements.

Impair- weaken or damage (something, especially a faculty or function).

**S19. Ans.(b)**

**Sol.** The given highlighted phrase is incorrect. The sentence is in past continuous tense hence 'operates' in statement is incorrect hence option (c) is also incorrect. In option (a), 'has' is incorrect because subject (establishments and factories) is plural here therefore option (d) is also incorrect. Hence correct choice is option (b).

**S20. Ans.(a)**

**Sol.** The highlighted phrase in the statement is incorrect as sentence is in Past indefinite. In option (b), 'have' is incorrect as subject (DCW) is singular. Option (c) is in Perfect continuous hence incorrect. In Option (d), 'issue' is incorrect as 'has+v3' is correct.

**S21. Ans.(d)**

**Sol.** In the highlighted phrase 'spend' is incorrect because sentence is in past tense and third form of spend is 'spent' therefore option (b) is also incorrect. In option (a), 'year' should be 'years'. In option (b), 'then' should be 'than' hence option (c) is also incorrect.

**S22. Ans.(e)**

**Sol.** The highlighted phrase in the sentence is correct hence no improvement required is correct choice.

**S23. Ans.(c)**

**Sol.** The correct replacement of the highlighted phrase is "has the skills" as the sentence follows the structure of present tense. Moreover, the subject of the sentence is singular. Hence, option (c) is the correct choice.

**S24. Ans.(a)**

**Sol.** The correct choice for the answer is option (a): *Both II and III.*

Statement II is true because it is stated in the last paragraph of the passage that "humans, like other animals, also evolved the option to freeze, or "play dead" in the face of a threat."

Statement III is true because in the first paragraph it says: *Most noises we hear are delivered from our ear to an area of the brain devoted to analyzing a sound and breaking it into its component parts, such as gender, age, and tone; high or low; a brass, stringed or electric instrument — or several combined; a rabbit or a coo, and what animal makes that sound.*

Statement I is incorrect because in the last paragraph it says "Humans and other animals scream for many reasons — in joy, in surprise, in fear." This tells us that there can be many reasons for humans screaming besides fear.

Hence, option (a) is the correct choice for the answer.



**S25. Ans.(b)**

**Sol.** The correct choice for the answer is option (b): *The scream one lets out when faced with danger holds an element of roughness which is crucial for letting others know of the possible danger.*

This answer is found in the second paragraph where it says: This is especially true for screams when we're scared. These have a unique sound signature encompassed by the term "roughness." This roughness is what serves to alert others to danger.

The rest of the options are not mentioned anywhere in the passage given. Therefore they cannot be considered for the answer.

Hence, option (b) is the correct choice for the answer.

**S26. Ans.(e)**

**Sol.** The correct choice for the answer is option (e): Both II and III

Statement II is false as the passage says: Since screaming takes quite a few muscles (probably *a little less than* the 100 used for speaking), a person frozen in fear is rendered mute as well as immobile.

Statement III is also false because it can be found in the article that: Research suggests when we scream in fear, the noise serves the *dual purpose of sharpening our own focus in the face of a threat as well as of warning others.*

The facts present in the passage help us figure out why the statements II and III are false.

Hence, option (e) is the correct choice for the answer.

**S27. Ans.(c)**

**Sol.** The correct choice for the answer is option (c): *A certain part of the brain responsible for overlooking muscle activity takes over other responses of the brain and forces every movement of the body to shut down, including speech.*

The answer is found towards the end of the last paragraph: *This happens involuntarily, when the cerebellum, the part of the brain that regulates muscle activity, overpowers other terrified brain responses and basically shuts down all movement. Since screaming takes quite a few muscles (probably a little less than the 100 used for speaking), a person frozen in fear is rendered mute as well as immobile.*

All the other options are nowhere to be found in the above passage.

Hence, option (c) is the correct choice for the answer.

**S28. Ans.(a)**

**Sol.** The correct choice for the answer is option (a): *The brain processes the scream in a part which helps activate our fight or flight mode which then helps us become aware and scan the situation.*

This answer is present in the second paragraph: *A scream goes straight from the ear to the amygdala, the part of the brain that processes fear and kickstarts the body's fight-or-flight response. The sound jolts our brains into increased alertness and analysis.*

Hence, option (a) is the correct choice for the answer.

**S29. Ans.(b)**

**Sol.** The correct choice for the answer is option (b): *signals*.

To signal means to convey information or instructions by means of a gesture, action, or sound.

Indicate means to express an intention, opinion, or wish in an indirect way.

Hence, *signals* is the word most similar to *indicates*.

To announce means to make a formal public statement about a fact, occurrence, or intention.

To bargain means an agreement between two or more people or groups as to what each will do for the other.

To divide means to separate or be separated into parts.

Flows mean the action or fact of moving along in a steady, continuous stream.

**S30. Ans.(d)**

**Sol.** The correct choice for the answer is option (d): *concentrate on*.

Focus on or concentrate on have similar meanings which can be explained as to give most of your attention to someone or something.

The rest of the phrases are not applicable because they all have different meanings. Hence, they cannot be used to replace the given phrase.

**Solutions (31-35):**

Building	Total Flats	Vacant Flats	Occupied Flats
A	400	160	240
B	460	120	340
C	540	180	360
D	600	220	380
E	420	200	220

**S31. Ans.(c)**

**Sol.** Required percentage =  $\frac{(180+220)}{(380+220)} \times 100 = 66\frac{2}{3}\% \approx 67\%$

**S32. Ans.(a)**

**Sol.** Required ratio =  $\frac{240+220}{180+220} = \frac{460}{400}$   
= 23 : 20

**S33. Ans.(b)**

**Sol.** Average vacant flats in A and E =  $\frac{160+200}{2} = 180$

Required percentage =  $\frac{180}{360} \times 100 = 50\%$

**S34. Ans.(d)**

**Sol.** Required Difference =  $(460 + 600) - (400 + 540)$   
= 1060 - 940 = 120

**S35. Ans.(c)**

**Sol.** Required no. =  $3 \times 240 + 2 \times 340 = 720 + 680$   
 $= 1400$

**S36. Ans.(c)**

**Sol.** The pattern of the series is -

$$0.2 + 2.5 \times 1 = 2.7$$

$$2.7 + 2.5 \times 2 = 7.7$$

$$7.7 + 2.5 \times 3 = 15.2$$

$$15.2 + 2.5 \times 4 = 25.2$$

$$25.2 + 2.5 \times 5 = 37.7$$

**S37. Ans.(d)**

**Sol.** The pattern of the series is -

$$15 \times 4 = 60$$

$$60 \times 3.5 = 210$$

$$210 \times 3 = 630$$

$$630 \times 2.5 = 1575$$

$$1575 \times 2 = 3150$$

**S38. Ans.(a)**

**Sol.** The pattern of the series is -

$$45 + 2^2 = 49$$

$$49 - 3^2 = 40$$

$$40 + 5^2 = 65$$

$$65 - 7^2 = 16$$

$$16 + 11^2 = 137$$

**S39. Ans.(b)**

**Sol.** The pattern of the series is -

$$4 \times 2 + 1 = 9$$

$$9 \times 3 + 1 = 28$$

$$28 \times 4 + 1 = 113$$

$$113 \times 5 + 1 = 566$$

$$566 \times 6 + 1 = 3397$$

**S40. Ans.(b)**

**Sol.** Pattern of series -

22	30	41	56	? = 76	102
+8	+11	+15	+20	+26	
	+3	+4	+5	+6	

**Solutions (41-45):**

	Group X	Group Y	Group Z	Total
A	30	20	40	90
B	40	25	15	80
C	50	25	40	115
Total	120	70	95	285

**S41. Ans.(b)**

**Sol.** Total students in group Y of all the classes = 70

**S42. Ans.(a)**

**Sol.** Required percentage =  $\frac{40}{25} \times 100 = 160\%$

**S43. Ans.(a)**

**Sol.** Total girls in group Y and Z together =  $34 - 12 = 22$

Total boys in group Y and Z together on class A =  $(90 - 30) - 22 = 38$

**S44. Ans.(b)**

**Sol.** Required difference =  $120 - 95 = 25$

**S45. Ans.(b)**

**Sol.** Average students in group X of class and B =  $\frac{40+30}{2} = 35$

Required ratio =  $\frac{35}{115} = \frac{7}{23}$

= 750m

**S46. Ans.(a)**

**Sol.** Let length of train A =  $3x$

Length of train B =  $5x$

Speed of train A =  $72 \times \frac{5}{18} = 20$  m/sec

Speed of train B =  $54 \times \frac{5}{18} = 15$  m/sec

ATQ,

$$\frac{8x}{20+15} = 16$$

$$\Rightarrow x = 70$$

$\therefore$  Length of train B =  $5 \times 70 = 350$  m

**S47. Ans.(b)**

**Sol.** Perimeter of the circle =  $2 \times \frac{22}{7} \times 28 = 176$  cm

Perimeter of square =  $176 - 32 = 144$

Side of square =  $\frac{144}{4} = 36$

So, area of square =  $1296$  cm<sup>2</sup>

**S48. Ans.(d)****Sol.** Let speed of boat be  $x$  kmph

ATQ

$$x - 1.5 = 10$$

$$x = 11.5$$

Let the distance be  $D$ .

$$\frac{D}{13} + \frac{D}{10} = 46$$

$$D = 260 \text{ km}$$

Total distance travel by boat =  $2 \times 260 = 520$ **S49. Ans.(e)****Sol.** Let the amount be Rs  $x$ 

ATQ

$$x \times 30100 - x \times 21100 = 432$$

$$x = \text{Rs } 4800$$

**S50. Ans.(d)****Sol.** Q got =  $100x$  votesSo, P got =  $50x$  votesTotal votes =  $150x$  votesFor tie  $\rightarrow$  Q's votes = P's votes =  $75x$ 

$$\Rightarrow 100x - 75x = 200$$

$$\Rightarrow x = 8$$

Total votes  $\rightarrow 8 \times 150 = 1200$ Required number =  $1200 \times 8 = 9600$ **S51. Ans.(c)****Sol.** Let cost price of pen =  $100x$  Rs.So, marked price of pen =  $100x \times \left(1 + \frac{50}{100}\right) = 150x$  Rs.And, selling price of pen =  $(150x - 100)$  Rs.

ATQ -

$$(150x - 100) - 100x = 100$$

$$50x = 200$$

$$x = 4 \text{ Rs.}$$

So, selling price of pen =  $(150 \times 4 - 100) = 500$  Rs.**S52. Ans.(a)****Sol.** Ratio of milk to water in mixture =  $(120 - 20) : 20 = 5 : 1$ Total water in final mixture =  $20 - 36 \times \frac{1}{6} = 14$  litersTotal milk in final mixture =  $100 - 36 \times \frac{5}{6} + 6 = 76$  litersRequired percentage =  $\frac{76-14}{76} \times 100 = 81.67 = 82\%$

**S53. Ans.(d)****Sol.** Let investment of C = X Rs.

ATQ -

$$\frac{X \times 6}{(35000 \times 12 + 40000 \times 12 + X \times 6)} = \frac{9000}{39000}$$

X = 45000 Rs.

**S54. Ans.(b)****Sol.** Pipe (A +B) together fill the whole tank =  $7 \times 2 = 14$  hoursPipe C empty the whole tank in =  $x \times \frac{100}{40} = \frac{5x}{2}$  hours

ATQ -

$$\frac{1}{14} - \frac{2}{5} = \frac{4}{105}$$

x = 12

**S55. Ans.(b)****Sol.** Total present age of A and B =  $30 \times 2 = 60$  years

Let four year ago age of A and C be 3x and 4x respectively

ATQ -

$$(4x + 4) - (3x + 4) = 4$$

x = 4 years

Present age of C =  $(4 \times 4 + 4) = 20$  yearsSo, sum of ages of A, B & C five years hence will be =  $60 + 20 + 5 \times 3 = 95$  years**S56. Ans.(d)****Sol.**  $512 \div ? \times 6 = 192$ 

$$? = \frac{512 \times 6}{192}$$

= 16

**S57. Ans.(e)****Sol.**  $\frac{48}{100} \times 625 \times \frac{4}{3} = ?$ 

? = 400

**S58. Ans.(c)****Sol.**  $65\% \times 480 - ? + 175 = 350$ 

? = 137

**S59. Ans.(d)****Sol.**  $45 + \frac{20}{100} \times ? = \frac{460}{4}$ 

$$45 + \frac{2}{5} = 115$$

? = 350

**S50. Ans.(b)**

$$\text{Sol. } 4^? \times 2 = \frac{16^2}{\sqrt[4]{16}}$$

$$4^? \times 2 = \frac{256}{2}$$

$$4^? = 64$$

$$4^? = (4)^3$$

$$? = 3$$

**S61. Ans.(c)**

$$\text{Sol. } 4 \times (? + 120) = (8)^3$$

$$4 \times ? = 512 - 480$$

$$? = \frac{32}{4}$$

$$? = 8$$

**S62. Ans.(a)**

$$\text{Sol. } \frac{56}{?} + 512 = \frac{13}{100} \times 4000$$

$$\frac{56}{?} = 520 - 512$$

$$? = 7$$

**S63. Ans.(e)**

$$\text{Sol. } \frac{51}{12} + \frac{7}{4} - ? = 4$$

$$? = \frac{51+21}{12} - 4$$

$$? = 6 - 4 = 2$$

**S64. Ans.(d)**

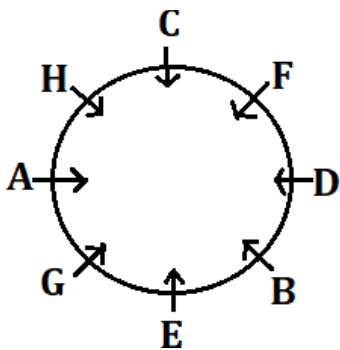
$$\text{Sol. } ? = 270 - 89 = 181$$

**S65. Ans.(c)**

$$\text{Sol. } ? = 88 + 288$$

$$= 376$$

**Solutions (66-70):**



S66. Ans.(d)

S67. Ans.(c)

S68. Ans.(b)

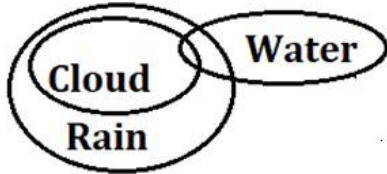
S69. Ans.(a)

S70. Ans.(e)

Solutions (71-73):

S71. Ans.(d)

Sol.



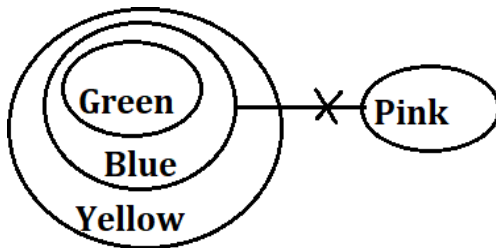
S72. Ans.(b)

Sol.



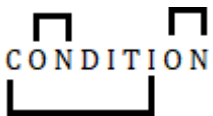
S73. Ans.(a)

Sol.



S74. Ans.(d)

Sol.



Solutions (75-79):

S75. Ans.(b)

Sol. U



S76. Ans.(e)

S77. Ans.(d)

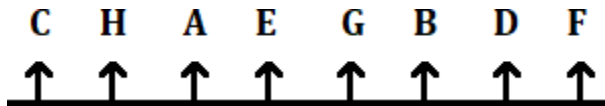
S78. Ans.(b)

S79. Ans.(d)

S80. Ans.(c)

Sol. Sent and Nest

Solutions (81-85):



S81. Ans.(a)

S82. Ans.(d)

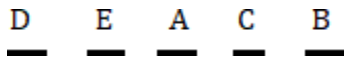
S83. Ans.(a)

S84. Ans.(e)

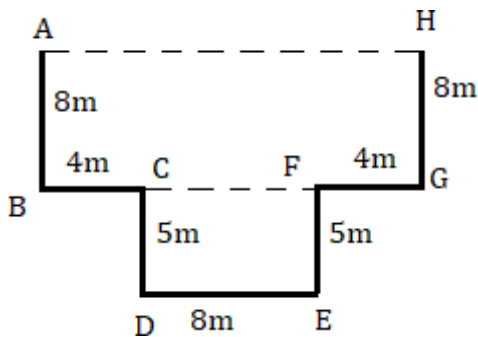
S85. Ans.(c)

S86. Ans.(a)

Sol.



Solutions (87-89):



S87. Ans.(c)

S88. Ans.(a)

S89. Ans.(b)

**Solutions (90-93):**

Boxes
P
V
Q
R
U
W
T
S

**S90. Ans.(d)**

**S91. Ans.(c)**

**S92. Ans.(b)**

**S93. Ans.(e)**

**Solutions (94-96):**

**S94. Ans.(b)**

**Sol. I:**  $M = 0$  (False) **II:**  $N < S$  (True)

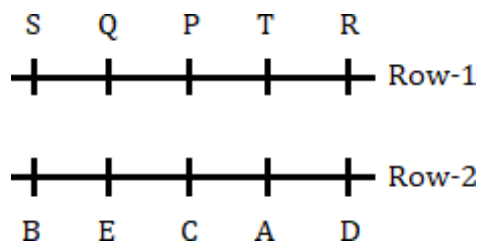
**S95. Ans.(c)**

**Sol. I:**  $C \geq F$  (False) **II:**  $F > C$  (False)

**S96. Ans.(a)**

**Sol. I:**  $S > W$  (True) **II:**  $U \geq Y$  (False)

**Solutions (97-100):**



**S97. Ans.(c)**

**S98. Ans.(a)**

**S99. Ans.(d)**

**S100. Ans.(a)**

\_\_\_\_\_

\_\_\_\_\_

## Solutions

**S1. Ans.(c)**

**Sol.** The correct choice is option (c). In part (A), 'despite of' is incorrect as 'despite' is never followed by 'of'.

**S2. Ans.(a)**

**Sol.** The error lies in part (A) of the sentence. Here 'recently' should be 'recent' as we need adjective here while 'recently' is adverb.

**S3. Ans.(b)**

**Sol.** The error lies in part (C). Here 'accept' should be 'except'. Accept is contextually incorrect in the given sentence.

accept means to agree to take something that somebody offers you

except means not including somebody/something; apart from the fact that

**S4. Ans.(c)**

**Sol.** The error lies in part (C). Here 'safety' should be 'safe' as we need an adjective here for the noun 'place'.

**S5. Ans.(c)**

**Sol.** The error lies in part (B). Here 'happens' should be replaced by 'happen' as to comply with the rule of subject verb agreement, we need plural verb for the plural subject (accidents).

**S6. Ans.(b)**

**Sol.** The correct sequence of words is BAC. Therefore the correct sentence will be "His pleasant manners and varied culture, not less than his artistic skill, contributed to render him popular."

**S7. Ans.(a)**

**Sol.** The correct sequence is ACB. Therefore the correct sentence will be "It was fairly obvious that his prison stay, especially during the pandemic, was detrimental to his well-being"

**S8. Ans.(d)**

**Sol.** The correct sequence is CBA. Therefore the correct sentence will be "To make matters worse, credible reports that some of the electronic evidence gathered in this case could have been planted remotely by malware were never investigated"

**S9. Ans.(a)**

**Sol.** The correct sequence is ACB. Therefore the correct sentence will be “We must understand mental health conditions for what they are and for how they are associated with disadvantages”

**S10. Ans.(d)**

**Sol.** The correct sequence is BCA. Therefore the correct sentence will be “Aviation websites are abuzz with reports of a rapid upgradation of aviation infrastructure in Tibet.”

**S11. Ans.(a)**

**Sol.** The paragraph illustrates the importance of sleep just as nutrition and exercise is to maintain a healthy body and mind. Therefore, the most suitable word for the given blank is ‘regular’ as it contributes to the theme of the passage about addressing healthy sleep routines.

Regular- recurring at uniform intervals.

System- a set of things working together as parts of a mechanism or an interconnecting network; a complex whole.

Seldom- not often; rarely

active- engaging or ready to engage in physically energetic pursuits.

Unusual- not habitually or commonly occurring or done.

**S12. Ans.(d)**

**Sol.** The given sentence contributes to the central theme of the paragraph which is about healthy sleeping habits by providing a statistical data of adults experiencing sleeping issues. Thus, the most suitable word for the given blank is ‘suffers’. All the other words are either grammatically or contextually incorrect.

Suffers- experience or be subjected to (something bad or unpleasant).

Address- think about and begin to deal with (an issue or problem).

Indicate- point out; show.

Results- a favourable outcome of an undertaking or contest.

Remarks- say something as a comment; mention.

**S13. Ans.(c)**

**Sol.** The given paragraph mentions the harmful repercussions of sleep deprivation. Therefore, the most suitable word for the given blank is ‘impacts.’

Impacts- a marked effect or influence.

Affect- Affect is usually a verb, and it means to impact or change.

Effect- Effect is usually a noun that you would use to indicate the result of a change.

Observes- notice or perceive (something) and register it as being significant.

Facilitate- make (an action or process) easy or easier.

**S14. Ans.(b)**

**Sol.** The most suitable word for the given blank is adequate which means 'satisfactory or acceptable in quality or quantity' as the passage refers to the harmful impacts on quality of life due to deprived sleep. All the other words are contextually incorrect.

Additional- added, extra, or supplementary to what is already present or available

Advanced- modern and recently developed.

Anticipated- regard as probable; expect or predict.

Barely- only just; almost not.

**S15. Ans.(a)**

**Sol.** A Modal verb is followed by another verb in the base form. Since 'can' is a modal verb, the main verb should be in its base form. This shortlists our options to 'lead' and 'consist'. Lead means cause (a person or animal) to go with one by holding them by the hand, a halter, a rope, etc. while moving forward; while consist means be composed or made up of. Hence, 'lead' is the most suitable word.

Indicated- point out; show.

Transformed- make a marked change in the form, nature, or appearance of.

Caused- make (something, especially something bad) happen.

**S16. Ans.(e)**

**Sol.** The given sentence of the passage mentions the conditions which further aggravate the condition of sleep deprivation. Thus, the most suitable word for the given blank is 'chronic' which means (of an illness) persisting for a long time or constantly recurring.

Absolute- not qualified or diminished in any way; total.

Desperate- (of an act) tried in despair or when everything else has failed.

Disability- a physical or mental condition that limits a person's movements, senses, or activities.

Emotional- relating to a person's emotions.

**S17. Ans.(c)**

**Sol.** The passage mentions that chronic sleep deprivation leads to all sorts of negative effects on physical and social well-being. Hence, it is concluded by advising the readers to improve the quality of sleep if one wants to achieve a healthy lifestyle. Therefore the most suitable word for the given blank is 'optimize'.

Optimize- make the best or most effective use of (a situation or resource).

Retrieval- the process of getting something back from somewhere.

Estimate- roughly calculate or judge the value, number, quantity, or extent of.

Decline- diminish in strength or quality; deteriorate.

Degrade- lower the quality of; cause to deteriorate.

**S18. Ans.(d)**

**Sol.** The most suitable word for the given blank is 'improve' which means make or become better. All the other words are contextually incorrect.

Lower- less high in position.

Corrupt- evil or morally depraved.

Aggregate- a whole formed by combining several separate elements.

Impair- weaken or damage (something, especially a faculty or function).

**S19. Ans.(b)**

**Sol.** The given highlighted phrase is incorrect. The sentence is in past continuous tense hence 'operates' in statement is incorrect hence option (c) is also incorrect. In option (a), 'has' is incorrect because subject (establishments and factories) is plural here therefore option (d) is also incorrect. Hence correct choice is option (b).

**S20. Ans.(a)**

**Sol.** The highlighted phrase in the statement is incorrect as sentence is in Past indefinite. In option (b), 'have' is incorrect as subject (DCW) is singular. Option (c) is in Perfect continuous hence incorrect. In Option (d), 'issue' is incorrect as 'has+v3' is correct.

**S21. Ans.(d)**

**Sol.** In the highlighted phrase 'spend' is incorrect because sentence is in past tense and third form of spend is 'spent' therefore option (b) is also incorrect. In option (a), 'year' should be 'years'. In option (b), 'then' should be 'than' hence option (c) is also incorrect.

**S22. Ans.(e)**

**Sol.** The highlighted phrase in the sentence is correct hence no improvement required is correct choice.

**S23. Ans.(c)**

**Sol.** The correct replacement of the highlighted phrase is "has the skills" as the sentence follows the structure of present tense. Moreover, the subject of the sentence is singular. Hence, option (c) is the correct choice.

**S24. Ans.(a)**

**Sol.** The correct choice for the answer is option (a): *Both II and III.*

Statement II is true because it is stated in the last paragraph of the passage that "humans, like other animals, also evolved the option to freeze, or "play dead" in the face of a threat."

Statement III is true because in the first paragraph it says: *Most noises we hear are delivered from our ear to an area of the brain devoted to analyzing a sound and breaking it into its component parts, such as gender, age, and tone; high or low; a brass, stringed or electric instrument — or several combined; a rabbit or a coo, and what animal makes that sound.*

Statement I is incorrect because in the last paragraph it says "Humans and other animals scream for many reasons — in joy, in surprise, in fear." This tells us that there can be many reasons for humans screaming besides fear.

Hence, option (a) is the correct choice for the answer.

**S25. Ans.(b)**

**Sol.** The correct choice for the answer is option (b): *The scream one lets out when faced with danger holds an element of roughness which is crucial for letting others know of the possible danger.*

This answer is found in the second paragraph where it says: This is especially true for screams when we're scared. These have a unique sound signature encompassed by the term "roughness." This roughness is what serves to alert others to danger.

The rest of the options are not mentioned anywhere in the passage given. Therefore they cannot be considered for the answer.

Hence, option (b) is the correct choice for the answer.

**S26. Ans.(e)**

**Sol.** The correct choice for the answer is option (e): Both II and III

Statement II is false as the passage says: Since screaming takes quite a few muscles (probably *a little less than the 100 used for speaking*), a person frozen in fear is rendered mute as well as immobile.

Statement III is also false because it can be found in the article that: Research suggests when we scream in fear, the noise serves the *dual purpose of sharpening our own focus in the face of a threat as well as of warning others.*

The facts present in the passage help us figure out why the statements II and III are false.

Hence, option (e) is the correct choice for the answer.

**S27. Ans.(c)**

**Sol.** The correct choice for the answer is option (c): *A certain part of the brain responsible for overlooking muscle activity takes over other responses of the brain and forces every movement of the body to shut down, including speech.*

The answer is found towards the end of the last paragraph: *This happens involuntarily, when the cerebellum, the part of the brain that regulates muscle activity, overpowers other terrified brain responses and basically shuts down all movement. Since screaming takes quite a few muscles (probably a little less than the 100 used for speaking), a person frozen in fear is rendered mute as well as immobile.*

All the other options are nowhere to be found in the above passage.

Hence, option (c) is the correct choice for the answer.

**S28. Ans.(a)**

**Sol.** The correct choice for the answer is option (a): *The brain processes the scream in a part which helps activate our fight or flight mode which then helps us become aware and scan the situation.*

This answer is present in the second paragraph: *A scream goes straight from the ear to the amygdala, the part of the brain that processes fear and kickstarts the body's fight-or-flight response. The sound jolts our brains into increased alertness and analysis.*

Hence, option (a) is the correct choice for the answer.



**S29. Ans.(b)**

**Sol.** The correct choice for the answer is option (b): *signals*.

To signal means to convey information or instructions by means of a gesture, action, or sound.

Indicate means to express an intention, opinion, or wish in an indirect way.

Hence, *signals* is the word most similar to *indicates*.

To announce means to make a formal public statement about a fact, occurrence, or intention.

To bargain means an agreement between two or more people or groups as to what each will do for the other.

To divide means to separate or be separated into parts.

Flows mean the action or fact of moving along in a steady, continuous stream.

**S30. Ans.(d)**

**Sol.** The correct choice for the answer is option (d): *concentrate on*.

Focus on or concentrate on have similar meanings which can be explained as to give most of your attention to someone or something.

The rest of the phrases are not applicable because they all have different meanings. Hence, they cannot be used to replace the given phrase.

**Solutions (31-35):**

Building	Total Flats	Vacant Flats	Occupied Flats
A	400	160	240
B	460	120	340
C	540	180	360
D	600	220	380
E	420	200	220

**S31. Ans.(c)**

**Sol.** Required percentage =  $\frac{(180+220)}{(380+220)} \times 100 = 66\frac{2}{3}\% \approx 67\%$

**S32. Ans.(a)**

**Sol.** Required ratio =  $\frac{240+220}{180+220} = \frac{460}{400}$   
= 23 : 20

**S33. Ans.(b)**

**Sol.** Average vacant flats in A and E =  $\frac{160+200}{2} = 180$

Required percentage =  $\frac{180}{360} \times 100 = 50\%$

**S34. Ans.(d)**

**Sol.** Required Difference =  $(460 + 600) - (400 + 540)$   
= 1060 - 940 = 120

**S35. Ans.(c)**

**Sol.** Required no. =  $3 \times 240 + 2 \times 340 = 720 + 680$   
 $= 1400$

**S36. Ans.(c)**

**Sol.** The pattern of the series is -

$$0.2 + 2.5 \times 1 = 2.7$$

$$2.7 + 2.5 \times 2 = 7.7$$

$$7.7 + 2.5 \times 3 = 15.2$$

$$15.2 + 2.5 \times 4 = 25.2$$

$$25.2 + 2.5 \times 5 = 37.7$$

**S37. Ans.(d)**

**Sol.** The pattern of the series is -

$$15 \times 4 = 60$$

$$60 \times 3.5 = 210$$

$$210 \times 3 = 630$$

$$630 \times 2.5 = 1575$$

$$1575 \times 2 = 3150$$

**S38. Ans.(a)**

**Sol.** The pattern of the series is -

$$45 + 2^2 = 49$$

$$49 - 3^2 = 40$$

$$40 + 5^2 = 65$$

$$65 - 7^2 = 16$$

$$16 + 11^2 = 137$$

**S39. Ans.(b)**

**Sol.** The pattern of the series is -

$$4 \times 2 + 1 = 9$$

$$9 \times 3 + 1 = 28$$

$$28 \times 4 + 1 = 113$$

$$113 \times 5 + 1 = 566$$

$$566 \times 6 + 1 = 3397$$

**S40. Ans.(b)**

**Sol.** Pattern of series -

22	30	41	56	? = 76	102
+8	+11	+15	+20	+26	
	+3	+4	+5	+6	

**Solutions (41-45):**

	Group X	Group Y	Group Z	Total
A	30	20	40	90
B	40	25	15	80
C	50	25	40	115
Total	120	70	95	285

**S41. Ans.(b)**

**Sol.** Total students in group Y of all the classes = 70

**S42. Ans.(a)**

**Sol.** Required percentage =  $\frac{40}{25} \times 100 = 160\%$

**S43. Ans.(a)**

**Sol.** Total girls in group Y and Z together =  $34 - 12 = 22$

Total boys in group Y and Z together on class A =  $(90 - 30) - 22 = 38$

**S44. Ans.(b)**

**Sol.** Required difference =  $120 - 95 = 25$

**S45. Ans.(b)**

**Sol.** Average students in group X of class and B =  $\frac{40+30}{2} = 35$

Required ratio =  $\frac{35}{115} = \frac{7}{23}$

= 750m

**S46. Ans.(a)**

**Sol.** Let length of train A =  $3x$

Length of train B =  $5x$

Speed of train A =  $72 \times \frac{5}{18} = 20$  m/sec

Speed of train B =  $54 \times \frac{5}{18} = 15$  m/sec

ATQ,

$$\frac{8x}{20+15} = 16$$

$$\Rightarrow x = 70$$

$\therefore$  Length of train B =  $5 \times 70 = 350$  m

**S47. Ans.(b)**

**Sol.** Perimeter of the circle =  $2 \times \frac{22}{7} \times 28 = 176$  cm

Perimeter of square =  $176 - 32 = 144$

Side of square =  $\frac{144}{4} = 36$

So, area of square =  $1296$  cm<sup>2</sup>

**S48. Ans.(d)****Sol.** Let speed of boat be  $x$  kmph

ATQ

$$x - 1.5 = 10$$

$$x = 11.5$$

Let the distance be  $D$ .

$$\frac{D}{13} + \frac{D}{10} = 46$$

$$D = 260 \text{ km}$$

Total distance travel by boat =  $2 \times 260 = 520$ **S49. Ans.(e)****Sol.** Let the amount be Rs  $x$ 

ATQ

$$x \times 30100 - x \times 21100 = 432$$

$$x = \text{Rs } 4800$$

**S50. Ans.(d)****Sol.** Q got =  $100x$  votesSo, P got =  $50x$  votesTotal votes =  $150x$  votesFor tie  $\rightarrow$  Q's votes = P's votes =  $75x$ 

$$\Rightarrow 100x - 75x = 200$$

$$\Rightarrow x = 8$$

Total votes  $\rightarrow 8 \times 150 = 1200$ Required number =  $1200 \times 8 = 9600$ **S51. Ans.(c)****Sol.** Let cost price of pen =  $100x$  Rs.So, marked price of pen =  $100x \times \left(1 + \frac{50}{100}\right) = 150x$  Rs.And, selling price of pen =  $(150x - 100)$  Rs.

ATQ -

$$(150x - 100) - 100x = 100$$

$$50x = 200$$

$$x = 4 \text{ Rs.}$$

So, selling price of pen =  $(150 \times 4 - 100) = 500$  Rs.**S52. Ans.(a)****Sol.** Ratio of milk to water in mixture =  $(120 - 20) : 20 = 5 : 1$ Total water in final mixture =  $20 - 36 \times \frac{1}{6} = 14$  litersTotal milk in final mixture =  $100 - 36 \times \frac{5}{6} + 6 = 76$  litersRequired percentage =  $\frac{76-14}{76} \times 100 = 81.67 = 82\%$

**S53. Ans.(d)****Sol.** Let investment of C = X Rs.

ATQ -

$$\frac{X \times 6}{(35000 \times 12 + 40000 \times 12 + X \times 6)} = \frac{9000}{39000}$$

X = 45000 Rs.

**S54. Ans.(b)****Sol.** Pipe (A +B) together fill the whole tank =  $7 \times 2 = 14$  hoursPipe C empty the whole tank in =  $x \times \frac{100}{40} = \frac{5x}{2}$  hours

ATQ -

$$\frac{1}{14} - \frac{2}{5} = \frac{4}{105}$$

x = 12

**S55. Ans.(b)****Sol.** Total present age of A and B =  $30 \times 2 = 60$  years

Let four year ago age of A and C be 3x and 4x respectively

ATQ -

$$(4x + 4) - (3x + 4) = 4$$

x = 4 years

Present age of C =  $(4 \times 4 + 4) = 20$  yearsSo, sum of ages of A, B & C five years hence will be =  $60 + 20 + 5 \times 3 = 95$  years**S56. Ans.(d)****Sol.**  $512 \div ? \times 6 = 192$ 

$$? = \frac{512 \times 6}{192}$$

= 16

**S57. Ans.(e)****Sol.**  $\frac{48}{100} \times 625 \times \frac{4}{3} = ?$ 

? = 400

**S58. Ans.(c)****Sol.**  $65\% \times 480 - ? + 175 = 350$ 

? = 137

**S59. Ans.(d)****Sol.**  $45 + \frac{20}{100} \times ? = \frac{460}{4}$ 

$$45 + \frac{2}{5} = 115$$

? = 350

**S50. Ans.(b)**

$$\text{Sol. } 4^? \times 2 = \frac{16^2}{\sqrt[4]{16}}$$

$$4^? \times 2 = \frac{256}{2}$$

$$4^? = 64$$

$$4^? = (4)^3$$

$$? = 3$$

**S61. Ans.(c)**

$$\text{Sol. } 4 \times (? + 120) = (8)^3$$

$$4 \times ? = 512 - 480$$

$$? = \frac{32}{4}$$

$$? = 8$$

**S62. Ans.(a)**

$$\text{Sol. } \frac{56}{?} + 512 = \frac{13}{100} \times 4000$$

$$\frac{56}{?} = 520 - 512$$

$$? = 7$$

**S63. Ans.(e)**

$$\text{Sol. } \frac{51}{12} + \frac{7}{4} - ? = 4$$

$$? = \frac{51+21}{12} - 4$$

$$? = 6 - 4 = 2$$

**S64. Ans.(d)**

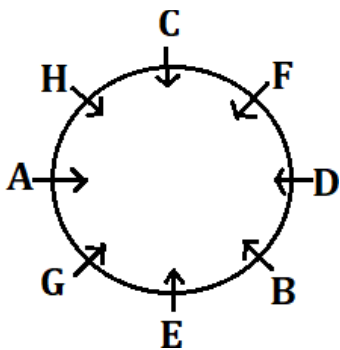
$$\text{Sol. } ? = 270 - 89 = 181$$

**S65. Ans.(c)**

$$\text{Sol. } ? = 88 + 288$$

$$= 376$$

**Solutions (66-70):**



S66. Ans.(d)

S67. Ans.(c)

S68. Ans.(b)

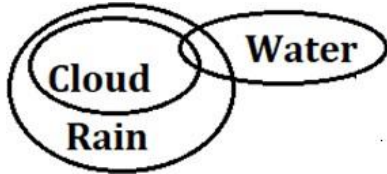
S69. Ans.(a)

S70. Ans.(e)

Solutions (71-73):

S71. Ans.(d)

Sol.



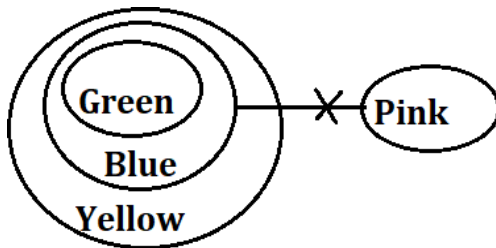
S72. Ans.(b)

Sol.



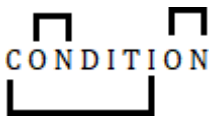
S73. Ans.(a)

Sol.



S74. Ans.(d)

Sol.



Solutions (75-79):

S75. Ans.(b)

Sol. U

S76. Ans.(e)

S77. Ans.(d)

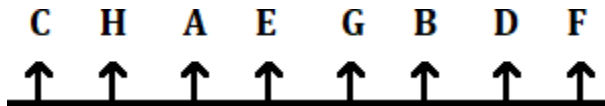
S78. Ans.(b)

S79. Ans.(d)

S80. Ans.(c)

Sol. Sent and Nest

Solutions (81-85):



S81. Ans.(a)

S82. Ans.(d)

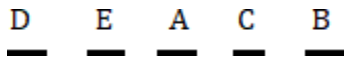
S83. Ans.(a)

S84. Ans.(e)

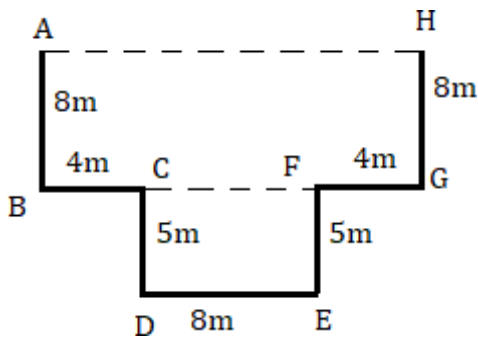
S85. Ans.(c)

S86. Ans.(a)

Sol.



Solutions (87-89):



S87. Ans.(c)

S88. Ans.(a)

S89. Ans.(b)



**Solutions (90-93):**

<b>Boxes</b>
P
V
Q
R
U
W
T
S

**S90. Ans.(d)**

**S91. Ans.(c)**

**S92. Ans.(b)**

**S93. Ans.(e)**

**Solutions (94-96):**

**S94. Ans.(b)**

**Sol. I:**  $M = 0$  (False) **II:**  $N < S$  (True)

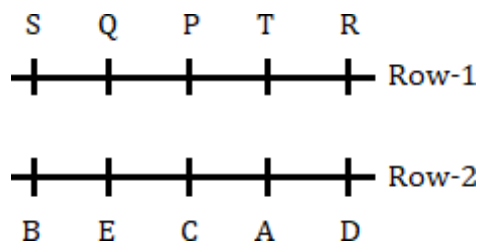
**S95. Ans.(c)**

**Sol. I:**  $C \geq F$  (False) **II:**  $F > C$  (False)

**S96. Ans.(a)**

**Sol. I:**  $S > W$  (True) **II:**  $U \geq Y$  (False)

**Solutions (97-100):**



**S97. Ans.(c)**

**S98. Ans.(a)**

**S99. Ans.(d)**

**S100. Ans.(a)**

\_\_\_\_\_

\_\_\_\_\_