

Railway Recruitment Board

Notations :

- Options shown in green color and with ✓ icon are correct.
- Options shown in red color and with ✗ icon are incorrect.

Question Paper Name:	Junior Engineer 26th Aug Shift 1 Actual
Subject Name:	Junior Engineer
Creation Date:	2015-08-18 12:50:20.0
Cut Off:	0
Duration:	120
Number of Questions:	150
Total Marks:	150.0

Junior Engineer

Group Number :	1
Group Id :	1
Group Maximum Duration :	0
Group Minimum Duration :	120
Revisit allowed for view? :	No
Revisit allowed for edit? :	No
Break time:	0
Group Marks:	150.0

Junior Engineer

Section Id :	1
Section Number :	1
Section type :	Online
Mandatory or Optional:	Mandatory
Number of Questions:	150
Number of Questions to be attempted:	150
Section Marks:	150.0

Sub-Section Number:	1
Sub-Section Id:	1
Question Shuffling Allowed :	Yes

Question Number : 1 Question Id : 1 Question Type : MCQ Option Shuffling : No
Correct : 1.0 Wrong : 0.33

Which of the following is an extensive property ?

Options :

- ✗ Pressure

2. ✓ Heat capacity

3. ✗ Temperature

4. ✗ Specific volume

Question Number : 2 Question Id : 2 Question Type : MCQ Option Shuffling : No

Correct : 1.0 Wrong : 0.33

Kelvin Planck's law deals with

Options :

1. ✗ Conservation of work

2. ✗ Conservation of heat

3. ✓ Conservation of heat into work

4. ✗ Conservation of work into heat

Question Number : 3 Question Id : 3 Question Type : MCQ Option Shuffling : No

Correct : 1.0 Wrong : 0.33

In which of the following mechanisms, is heat conducted in liquid and gas

Options :

1. ✗ Lattice vibration

2. ✗ Transportation of free electrons

3. ✓ Collisions and diffusion

4. ✗ No heat conducted

Question Number : 4 Question Id : 4 Question Type : MCQ Option Shuffling : No

Correct : 1.0 Wrong : 0.33

An essential requirement for the transfer of heat from one body to another body is that

Options :

1. ✗ Both bodies must be solids

2. ✗ Both bodies must be in contact

3. ✓ Temperatures of the two bodies must be different

4. ✗ Temperatures of the two bodies must be same

Question Number : 5 Question Id : 5 Question Type : MCQ Option Shuffling : No

Correct : 1.0 Wrong : 0.33

The silencer of an internal combustion engine

Options :

1. Reduces noise
2. Decreases break specific fuel consumption
3. Increases break specific fuel consumption
4. Has no effect on its efficiency

Question Number : 6 Question Id : 6 Question Type : MCQ Option Shuffling : No

Correct : 1.0 Wrong : 0.33

Diesel engines are generally

Options :

1. Quality governed
2. Quantity governed
3. Combination of quality and quantity governed
4. Heat and mass governed

Question Number : 7 Question Id : 7 Question Type : MCQ Option Shuffling : No

Correct : 1.0 Wrong : 0.33

The theoretically correct mixture of air and petrol is

Options :

1. 10 : 1
2. 15 : 1
3. 20 : 1
4. 25 : 1

Question Number : 8 Question Id : 8 Question Type : MCQ Option Shuffling : No

Correct : 1.0 Wrong : 0.33

Trepanning operation is used for

Options :

1. Bevelling the edges
2. Finishing the ends of job
3. Cutting grooves
4. Producing large holes

Question Number : 9 Question Id : 9 Question Type : MCQ Option Shuffling : No

Correct : 1.0 Wrong : 0.33

The gases used in TIG welding are

Options :

1. ✘ Helium and neon
2. ✔ Argon and helium
3. ✘ Ozone and neon
4. ✘ Carbondioxide and nitrogen

Question Number : 10 Question Id : 10 Question Type : MCQ Option Shuffling : No

Correct : 1.0 Wrong : 0.33

In centrifugal casting , the cores are generally made of

Options :

1. ✘ Wax
2. ✘ Plastic
3. ✘ Plaster of Paris
4. ✔ Cores are not used

Question Number : 11 Question Id : 11 Question Type : MCQ Option Shuffling : No

Correct : 1.0 Wrong : 0.33

Calculate the tail stock set over to turn a taper of 1 in 10 on a job of 60 mm length

Options :

1. ✘ 6 mm
2. ✔ 3 mm
3. ✘ 10 mm
4. ✘ 60 mm

Question Number : 12 Question Id : 12 Question Type : MCQ Option Shuffling : No

Correct : 1.0 Wrong : 0.33

The maximum flame temperature occurs

Options :

1. ✘ At the outer cone
2. ✔ At the inner cone

3. ✘ Between the outer and inner cone

4. ✘ At the torch tip

Question Number : 13 Question Id : 13 Question Type : MCQ Option Shuffling : No
Correct : 1.0 Wrong : 0.33

Down milling is also known as

Options :

1. ✘ Conventional milling

2. ✔ Climb milling

3. ✘ End milling

4. ✘ Face milling

Question Number : 14 Question Id : 14 Question Type : MCQ Option Shuffling : No
Correct : 1.0 Wrong : 0.33

Bolt heads are manufactured by

Options :

1. ✘ Swagging

2. ✘ Roll forging

3. ✘ Tumbling

4. ✔ Upset forging

Question Number : 15 Question Id : 15 Question Type : MCQ Option Shuffling : No
Correct : 1.0 Wrong : 0.33

The resistance of a conductor does not depend upon

Options :

1. ✔ Shape of cross section

2. ✘ Temperature

3. ✘ Material

4. ✘ Length

Question Number : 16 Question Id : 16 Question Type : MCQ Option Shuffling : No
Correct : 1.0 Wrong : 0.33

..... is not a resistance welding process.

Options :

1. ✘ Projection
2. ✘ Seam
3. ✘ Flash
4. ✔ Carbon arc

Question Number : 17 Question Id : 17 Question Type : MCQ Option Shuffling : No

Correct : 1.0 Wrong : 0.33

Which of the following motors will have the highest "no load" speed?

Options :

1. ✘ Shunt motor
2. ✔ Series motor
3. ✘ Cumulative Compound motor
4. ✘ Differential Compound motor

Question Number : 18 Question Id : 18 Question Type : MCQ Option Shuffling : No

Correct : 1.0 Wrong : 0.33

In the DC motor, iron losses occur in

Options :

1. ✘ Field
2. ✔ Armature
3. ✘ Brushes
4. ✘ Commutator

Question Number : 19 Question Id : 19 Question Type : MCQ Option Shuffling : No

Correct : 1.0 Wrong : 0.33

The number of poles in a phase induction motor at 50 Hz and running at 1500 rpm will be

Options :

1. ✘ 2
2. ✘ 3
3. ✔ 4
4. ✘ 5

Question Number : 20 Question Id : 20 Question Type : MCQ Option Shuffling : No

Correct : 1.0 Wrong : 0.33

A power plant usually works on

Options :

1. ✘ Otto cycle
2. ✘ Binary vapour cycle
3. ✘ Brayton cycle
4. ✔ Rankine cycle

Question Number : 21 Question Id : 21 Question Type : MCQ Option Shuffling : No

Correct : 1.0 Wrong : 0.33

Turbine used for low head is

Options :

1. ✔ Kaplan turbine
2. ✘ Francis turbine
3. ✘ Pelton Wheel turbine
4. ✘ Propellerturbine

Question Number : 22 Question Id : 22 Question Type : MCQ Option Shuffling : No

Correct : 1.0 Wrong : 0.33

Transformer ratings are usually expressed in

Options :

1. ✔ kVA
2. ✘ kW
3. ✘ kWh
4. ✘ kVAR

Question Number : 23 Question Id : 23 Question Type : MCQ Option Shuffling : No

Correct : 1.0 Wrong : 0.33

A step up transformer increases

Options :

1. ✘ power
2. ✘ resistance
3. ✔ voltage

4. ✘ frequency

Question Number : 24 Question Id : 24 Question Type : MCQ Option Shuffling : No
Correct : 1.0 Wrong : 0.33

In an AC circuit, the ratio of kW / kVA represents

Options :

1. ✔ Power factor
2. ✘ Form factor
3. ✘ Load factor
4. ✘ Diversity factor

Question Number : 25 Question Id : 25 Question Type : MCQ Option Shuffling : No
Correct : 1.0 Wrong : 0.33

Depletion layer is found in

Options :

1. ✘ p type semiconductors
2. ✘ n type semiconductors
3. ✔ diodes
4. ✘ intrinsic semiconductors

Question Number : 26 Question Id : 26 Question Type : MCQ Option Shuffling : No
Correct : 1.0 Wrong : 0.33

The energy gap in a semiconductor is

Options :

1. ✘ zero
2. ✘ infinite
3. ✘ very high
4. ✔ of the order of 1 eV

Question Number : 27 Question Id : 27 Question Type : MCQ Option Shuffling : No
Correct : 1.0 Wrong : 0.33

BJT stands for

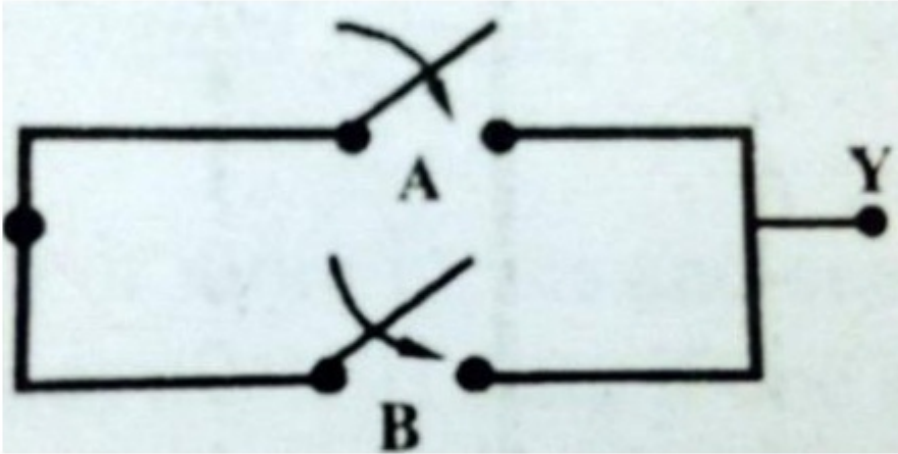
Options :

1. ✘ Binomial Junction Terminal

- 2. ✓ Bipolar Junction Transistor
- 3. ✗ Binomial Junction Transistor
- 4. ✗ Bipolar Junction Terminal

Question Number : 28 Question Id : 28 Question Type : MCQ Option Shuffling : No
Correct : 1.0 Wrong : 0.33

The following figure is an electrical equivalent of



- Options :
- 1. ✗ NOT gate
 - 2. ✓ OR gate
 - 3. ✗ NOR gate
 - 4. ✗ NAND gate

Question Number : 29 Question Id : 29 Question Type : MCQ Option Shuffling : No
Correct : 1.0 Wrong : 0.33

The hexadecimal equivalent of the decimal number 210 is

- Options :
- 1. ✗ H1
 - 2. ✗ F2
 - 3. ✓ D2
 - 4. ✗ H2

Question Number : 30 Question Id : 30 Question Type : MCQ Option Shuffling : No
Correct : 1.0 Wrong : 0.33

The number of atoms in a body centred unit cell is

- Options :
- 1. ✗ 1

2. ✓ 2

3. ✗ 3

4. ✗ 4

Question Number : 31 Question Id : 31 Question Type : MCQ Option Shuffling : No
Correct : 1.0 Wrong : 0.33

Ideal operational amplifier has input impedance of

Options :

1. ✗ zero

2. ✓ infinity

3. ✗ 1 ohm

4. ✗ 0.1 ohm

Question Number : 32 Question Id : 32 Question Type : MCQ Option Shuffling : No
Correct : 1.0 Wrong : 0.33

Theoretically, a bridge rectifier has a maximum efficiency of

Options :

1. ✗ 84%

2. ✗ 48.2%

3. ✗ 82.2%

4. ✓ 81.2%

Question Number : 33 Question Id : 33 Question Type : MCQ Option Shuffling : No
Correct : 1.0 Wrong : 0.33

Avalanche breakdown is primarily dependent on the phenomenon of

Options :

1. ✗ Doping

2. ✗ Collision

3. ✗ Ionisation

4. ✓ Recombination

Question Number : 34 Question Id : 34 Question Type : MCQ Option Shuffling : No
Correct : 1.0 Wrong : 0.33

A UJT contains

Options :

1. ✘ 4 pn junctions
2. ✘ 3 pn junctions
3. ✘ 2 pn junctions
4. ✔ 1 pn junction

Question Number : 35 Question Id : 35 Question Type : MCQ Option Shuffling : No
Correct : 1.0 Wrong : 0.33

If a material has identical properties in all directions, it is said to be

Options :

1. ✘ Homogeneous
2. ✔ Isotropic
3. ✘ Elastic
4. ✘ Orthotropic

Question Number : 36 Question Id : 36 Question Type : MCQ Option Shuffling : No
Correct : 1.0 Wrong : 0.33

If the plasticity index of a soil mass is zero, the soil is

Options :

1. ✘ Loess
2. ✘ Clayey silt
3. ✘ Silt
4. ✔ Sand

Question Number : 37 Question Id : 37 Question Type : MCQ Option Shuffling : No
Correct : 1.0 Wrong : 0.33

In RCC beams, as the percentage area of tensile steel increases

Options :

1. ✔ Depth of neutral axis increases
2. ✘ Depth of neutral axis decreases
3. ✘ Depth of neutral axis does not change
4. ✘ Lever arm increases

Question Number : 38 Question Id : 38 Question Type : MCQ Option Shuffling : No
Correct : 1.0 Wrong : 0.33

Fluid is a substance which offers no resistance to change of

Options :

1. ✘ Volume
2. ✘ Pressure
3. ✔ Shape
4. ✘ Flow

Question Number : 39 Question Id : 39 Question Type : MCQ Option Shuffling : No
Correct : 1.0 Wrong : 0.33

The invar tape is made of an alloy of

Options :

1. ✘ Copper and steel
2. ✘ Brass and nickel
3. ✘ Brass and steel
4. ✔ Nickel and steel

Question Number : 40 Question Id : 40 Question Type : MCQ Option Shuffling : No
Correct : 1.0 Wrong : 0.33

Gantt chart provides information about

Options :

1. ✘ Break even point analysis
2. ✔ Production schedule
3. ✘ Material handling layout
4. ✘ Determining selling price

Question Number : 41 Question Id : 41 Question Type : MCQ Option Shuffling : No
Correct : 1.0 Wrong : 0.33

When water is added to cement

Options :

1. ✘ Chemical reaction starts
2. ✘ Heat is absorbed
3. ✔ Heat is generated

4. ✘ Impurities are washed out

Question Number : 42 Question Id : 42 Question Type : MCQ Option Shuffling : No
Correct : 1.0 Wrong : 0.33

Pascal-second is the unit of

Options :

1. ✘ Pressure
2. ✘ Kinematic viscosity
3. ✔ Dynamic viscosity
4. ✘ Surface tension

Question Number : 43 Question Id : 43 Question Type : MCQ Option Shuffling : No
Correct : 1.0 Wrong : 0.33

Which of the following is not used in measuring perpendicular offsets?

Options :

1. ✔ Line ranger
2. ✘ Steel tape
3. ✘ Optical square
4. ✘ Cross staff

Question Number : 44 Question Id : 44 Question Type : MCQ Option Shuffling : No
Correct : 1.0 Wrong : 0.33

A fully saturated soil is said to be

Options :

1. ✘ One phase system
2. ✘ Two phase system with soil and air
3. ✔ Two phase system with soil and water
4. ✘ Three phase system

Question Number : 45 Question Id : 45 Question Type : MCQ Option Shuffling : No
Correct : 1.0 Wrong : 0.33

Which of the following trees yields hard wood?

Options :

1. ✘ Deodar
2. ✘ Chir
3. ✔ Shishum
4. ✘ Pine

Question Number : 46 Question Id : 46 Question Type : MCQ Option Shuffling : No
Correct : 1.0 Wrong : 0.33

IS 800 : 2007 is based on

Options :

1. ✘ Elastic design method
2. ✘ Ultimate load method
3. ✘ Working stress method
4. ✔ Limit state method

Question Number : 47 Question Id : 47 Question Type : MCQ Option Shuffling : No
Correct : 1.0 Wrong : 0.33

An ohmmeter is a

Options :

1. ✘ moving iron instrument
2. ✔ moving coil instrument
3. ✘ dynamometer instrument
4. ✘ hot wire meter

Question Number : 48 Question Id : 48 Question Type : MCQ Option Shuffling : No
Correct : 1.0 Wrong : 0.33

For measuring a very high resistance we should use

Options :

1. ✘ Kelvin's double bridge
2. ✘ Wheat stone bridge
3. ✔ Meggar
4. ✘ Schering bridge

Question Number : 49 Question Id : 49 Question Type : MCQ Option Shuffling : No
Correct : 1.0 Wrong : 0.33

The electrical power to a meggar is provided by

Options :

1. ✘ battery
2. ✔ permanent magnet D.C. generator
3. ✘ AC generator
4. ✘ either AC or DC generator

Question Number : 50 Question Id : 50 Question Type : MCQ Option Shuffling : No
Correct : 1.0 Wrong : 0.33

In a meggar, controlling torque is provided by

Options :

1. ✘ spring
2. ✘ gravity
3. ✔ coil
4. ✘ eddy current

Question Number : 51 Question Id : 51 Question Type : MCQ Option Shuffling : No
Correct : 1.0 Wrong : 0.33

The operating voltage of a meggar is about

Options :

1. ✘ 6 V
2. ✘ 12 V
3. ✘ 40 V
4. ✔ 100 V

Question Number : 52 Question Id : 52 Question Type : MCQ Option Shuffling : No
Correct : 1.0 Wrong : 0.33

The prescribed per capita water demand for small cities and towns is

Options :

1. ✔ 135 litres per capita per day
2. ✘ 200 litres per capita per day
3. ✘ 150 litres per capita per day
4. ✘ 180 litres per capita per day

Question Number : 53 Question Id : 53 Question Type : MCQ Option Shuffling : No
Correct : 1.0 Wrong : 0.33

The spacing between two bars in medium size screen ranges from

Options :

1. ✘ 20 – 50 mm
2. ✔ 20 – 40 mm
3. ✘ 10 – 20 mm
4. ✘ 10 – 30 mm

Question Number : 54 Question Id : 54 Question Type : MCQ Option Shuffling : No

Correct : 1.0 Wrong : 0.33

In small water supplies such as army troops, private plants and swimming pools, the most common disinfectants used are

Options :

1. ✘ chlorine dioxide and potassium permanganate
2. ✘ ozone and uv rays
3. ✔ iodine and bromine
4. ✘ chlorine and bromine

Question Number : 55 Question Id : 55 Question Type : MCQ Option Shuffling : No

Correct : 1.0 Wrong : 0.33

The air pollution control device, cyclone is used for the removal of

Options :

1. ✘ 100 μm particles
2. ✔ 10 μm particles
3. ✘ 50 μm particles
4. ✘ 2.5 μm particles

Question Number : 56 Question Id : 56 Question Type : MCQ Option Shuffling : No

Correct : 1.0 Wrong : 0.33

The 20 dBA noise level is how many times more powerful than 1 dBA noise level?

Options :

1. ✘ 10 times
2. ✘ 20 times
3. ✔ 100 times

4. ✘ 200 times

Question Number : 57 Question Id : 57 Question Type : MCQ Option Shuffling : No

Correct : 1.0 Wrong : 0.33

The percentage contribution of CO₂ to green house effect is

Options :

1. ✔ 50

2. ✘ 30

3. ✘ 18

4. ✘ 10

Question Number : 58 Question Id : 58 Question Type : MCQ Option Shuffling : No

Correct : 1.0 Wrong : 0.33

Which of the following is not a valid category of impact printers?

Options :

1. ✘ Dot-matrix printers

2. ✘ Line printers

3. ✘ Drum printers

4. ✔ Ink-jet printers

Question Number : 59 Question Id : 59 Question Type : MCQ Option Shuffling : No

Correct : 1.0 Wrong : 0.33

Which of the following is not true about RAM?

Options :

1. ✘ Random access memory

2. ✘ Read write memory

3. ✘ Volatile memory

4. ✔ Sequential access memory

Question Number : 60 Question Id : 60 Question Type : MCQ Option Shuffling : No

Correct : 1.0 Wrong : 0.33

Which of the following is not a component of Central Processing Unit (CPU)?

Options :

1. ✘ Arithmetic and Logic Unit (ALU)

2. ✘ Control Unit (CU)
3. ✘ Registers
4. ✔ Random Access Memory (RAM)

Question Number : 61 Question Id : 61 Question Type : MCQ Option Shuffling : No
Correct : 1.0 Wrong : 0.33

ASCII stands for _____

Options :

1. ✘ American Standard Code for Immediate Interchange
2. ✘ American Standard Code for Immediate Information
3. ✔ American Standard Code for Information Interchange
4. ✘ Australian Standard Code for Information Interchange

Question Number : 62 Question Id : 62 Question Type : MCQ Option Shuffling : No
Correct : 1.0 Wrong : 0.33

The binary representation of 99.25 is _____

Options :

1. ✘ $(1100011.10)_2$
2. ✔ $(1100011.01)_2$
3. ✘ $(1101011.10)_2$
4. ✘ $(1000011.11)_2$

Question Number : 63 Question Id : 63 Question Type : MCQ Option Shuffling : No
Correct : 1.0 Wrong : 0.33

Considering X as a binary variable, the Boolean expression $X + 1$ is equivalent to

Options :

1. ✘ X
2. ✔ 1
3. ✘ 0

4. ✘ X'

Question Number : 64 Question Id : 64 Question Type : MCQ Option Shuffling : No

Correct : 1.0 Wrong : 0.33

The 2's compliment of the binary number $(11001001)_2$ is

Options :

1. ✘ $(00110110)_2$

2. ✘ $(00111111)_2$

3. ✔ $(00110111)_2$

4. ✘ $(10110111)_2$

Question Number : 65 Question Id : 65 Question Type : MCQ Option Shuffling : No

Correct : 1.0 Wrong : 0.33

Which of the following is a real-time operating system?

Options :

1. ✘ Mac OS X

2. ✘ Linux

3. ✘ Windows 7

4. ✔ Windows CE

Question Number : 66 Question Id : 66 Question Type : MCQ Option Shuffling : No

Correct : 1.0 Wrong : 0.33

Class 'A' IP addresses use _____ bits for Network ID.

Options :

1. ✔ 8

2. ✘ 16

3. ✘ 24

4. ✘ 32

Question Number : 67 Question Id : 67 Question Type : MCQ Option Shuffling : No

Correct : 1.0 Wrong : 0.33

Which of the following is not a Web browser?

Options :

1. ✘ Chrome

2. ✘ Internet Explorer

3. ✘ Opera

4. ✔ Hadoop

Question Number : 68 Question Id : 68 Question Type : MCQ Option Shuffling : No

Correct : 1.0 Wrong : 0.33

An area of 64 square kilometre is represented by 256 square centimetre on a map. The R. F. of the scale is

Options :

1. ✘ $1/4$

2. ✔ $1/50000$

3. ✘ $1/2$

4. ✘ $1/5000$

Question Number : 69 Question Id : 69 Question Type : MCQ Option Shuffling : No

Correct : 1.0 Wrong : 0.33

An involute profile is used in

Options :

1. ✘ pulleys

2. ✘ cams

3. ✘ chains

4. ✔ gears

Question Number : 70 Question Id : 70 Question Type : MCQ Option Shuffling : No

Correct : 1.0 Wrong : 0.33

If a line is parallel to H.P. and inclined to V.P., its front view will be

Options :

1. ✔ a line of smaller dimension

2. ✘ a line of larger dimension

3. ✘ a line of same dimension

4. ✘ a point

Question Number : 71 Question Id : 71 Question Type : MCQ Option Shuffling : No

Correct : 1.0 Wrong : 0.33

In multi-view projections, the xy line is known as

Options :

1. ✘ horizontal line
2. ✘ vertical line
3. ✘ traces
4. ✔ reference line

Question Number : 72 Question Id : 72 Question Type : MCQ Option Shuffling : No
Correct : 1.0 Wrong : 0.33

Isometric drawings fall into the category of

Options :

1. ✘ multi-view drawings
2. ✘ oblique drawings
3. ✔ axonometric drawings
4. ✘ perspective drawings

Question Number : 73 Question Id : 73 Question Type : MCQ Option Shuffling : No
Correct : 1.0 Wrong : 0.33

An object of weight 49 N is accelerated across a level surface at 0.20 m/s^2 . The net force acting on the object is ($g = 9.8 \text{ m/s}^2$)

Options :

1. ✘ 9.8 N
2. ✔ 1.0 N
3. ✘ 5.0 N
4. ✘ 0.5 N.

Question Number : 74 Question Id : 74 Question Type : MCQ Option Shuffling : No
Correct : 1.0 Wrong : 0.33

The weight of an object on the surface of Earth is 60 N. On the surface of Moon, its weight will be

Options :

1. ✔ 10 N
2. ✘ 30 N
3. ✘ 60 N
4. ✘ 360 N.

Question Number : 75 Question Id : 75 Question Type : MCQ Option Shuffling : No
Correct : 1.0 Wrong : 0.33

Shyam pushes a box 10 m on a horizontal surface by applying a 30 N force parallel to the surface. The work done is

Options :

1. ✘ 3 J
2. ✘ 30 J
3. ✔ 300 J
4. ✘ 0.3 J

Question Number : 76 Question Id : 76 Question Type : MCQ Option Shuffling : No

Correct : 1.0 Wrong : 0.33

A sound wave passes a point of observation. At this point, the time interval between two successive crests is 0.02 s. Which of the following statements about the wave is correct?

Options :

1. ✘ The wavelength is 50 m
2. ✘ The wavelength is 0.02 m
3. ✘ The velocity of propagation is 50 m/s
4. ✔ The frequency is 50 Hz

Question Number : 77 Question Id : 77 Question Type : MCQ Option Shuffling : No

Correct : 1.0 Wrong : 0.33

A ray is incident on a plane mirror. As the angle of incidence is increased, the angle between the incident and reflected rays ultimately approaches the value

Options :

1. ✘ 90°
2. ✔ 180°
3. ✘ 45°
4. ✘ zero

Question Number : 78 Question Id : 78 Question Type : MCQ Option Shuffling : No

Correct : 1.0 Wrong : 0.33

Two resistors of $3\ \Omega$ and $6\ \Omega$ are connected in parallel. This combination in turn is connected in series with a $2\ \Omega$ resistor and a 6 V battery. The current in the $2\ \Omega$ resistor is

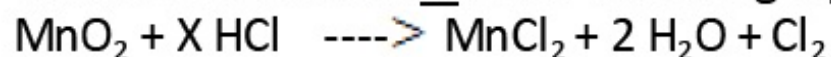
Options :

1. ✘ 3.7 A
2. ✘ 5.4 A
3. ✔ 1.5 A
4. ✘ 3.0 A

Question Number : 79 Question Id : 79 Question Type : MCQ Option Shuffling : No

Correct : 1.0 Wrong : 0.33

What is the value of X in the following equation?



Options :

1. ✘ 2
2. ✘ 3
3. ✔ 4
4. ✘ 5

Question Number : 80 Question Id : 80 Question Type : MCQ Option Shuffling : No

Correct : 1.0 Wrong : 0.33

Which of the following element is lustrous in nature?

Options :

1. ✘ Carbon
2. ✔ Iodine
3. ✘ Sulphur
4. ✘ Nitrogen

Question Number : 81 Question Id : 81 Question Type : MCQ Option Shuffling : No

Correct : 1.0 Wrong : 0.33

In Modern Periodic Table, the electronegativity of elements

Options :

1. ✘ Increases down the group
2. ✔ Increases in moving from left to right in a period
3. ✘ Decreases in moving from left to right in a period
4. ✘ Does not follow any regular trend in a group or a period

Question Number : 82 Question Id : 82 Question Type : MCQ Option Shuffling : No

Correct : 1.0 Wrong : 0.33

A trivalent metal "M" was made to react with nitrogen to yield 0.5 mole of metal nitride. Which of the following is a correct statement about the product of this reaction?

The reaction product contains

Options :

1. ✔ 3.0165×10^{23} molecules of oxide of formula MN

2. ✘ 3.0165×10^{23} molecules of oxide of formula M_3N

3. ✘ $3.0165 \times 10^{11.5}$ molecules of oxide of formula M_3N

4. ✘ $3.0165 \times 10^{11.5}$ molecules of oxide of formula MN

Question Number : 83 Question Id : 83 Question Type : MCQ Option Shuffling : No

Correct : 1.0 Wrong : 0.33

How many C-H bonds are there in a molecule of ethanoic acid?

Options :

1. ✘ 6

2. ✘ 5

3. ✘ 4

4. ✔ 3

Question Number : 84 Question Id : 84 Question Type : MCQ Option Shuffling : No

Correct : 1.0 Wrong : 0.33

49 mL of 0.1 M sodium hydroxide solution is added to 50 mL of 0.1 M solution of nitric acid. Approximate pH of the resulting solution will be

Options :

1. ✔ 3

2. ✘ 7

3. ✘ 8

4. ✘ 13

Question Number : 85 Question Id : 85 Question Type : MCQ Option Shuffling : No

Correct : 1.0 Wrong : 0.33

Substances enter cells through processes given below. For which process is energy required?

Options :

1. ✘ Diffusion

2. ✘ Absorption of diffusible particles

3. ✘ Osmosis

4. ✔ Active transport

Question Number : 86 Question Id : 86 Question Type : MCQ Option Shuffling : No

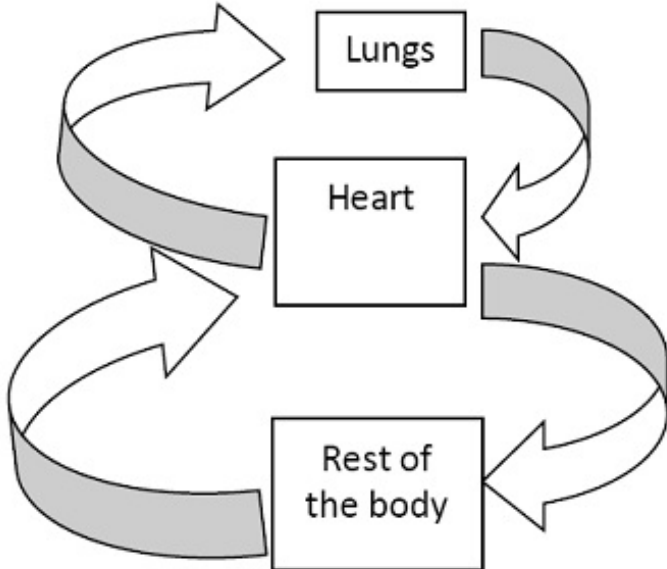
Correct : 1.0 Wrong : 0.33

Skin colour, eye colour, shape of nose and some other features are caused by

Options :

1. ✓ genes
2. ✗ environment
3. ✗ genes and environment
4. ✗ specific number of chromosomes

Question Number : 87 Question Id : 87 Question Type : MCQ Option Shuffling : No
Correct : 1.0 Wrong : 0.33



The above diagram is a simplified outline of which physiological function of the body?

Options :

1. ✗ Respiration and gaseous exchange
2. ✗ Digestion of ingested food
3. ✓ Circulation of blood
4. ✗ Removal of urine

Question Number : 88 Question Id : 88 Question Type : MCQ Option Shuffling : No
Correct : 1.0 Wrong : 0.33

A plant remained in the dark for several days and died because it could not

Options :

1. ✗ breathe
2. ✓ photosynthesize
3. ✗ remove waste
4. ✗ reproduce

Question Number : 89 Question Id : 89 Question Type : MCQ Option Shuffling : No
Correct : 1.0 Wrong : 0.33

The brain is made of cells known as

Options :

1. ✓ neurons
2. ✗ nephrons
3. ✗ cytons
4. ✗ virions

Question Number : 90 Question Id : 90 Question Type : MCQ Option Shuffling : No

Correct : 1.0 Wrong : 0.33

What kind of reproduction is it when sperm and ovum fuse to form a zygote?

Options :

1. ✗ Asexual
2. ✓ Sexual
3. ✗ Budding
4. ✗ Binary fission

Question Number : 91 Question Id : 91 Question Type : MCQ Option Shuffling : No

Correct : 1.0 Wrong : 0.33

The HCF of two numbers is 6 and their LCM is 72. If one number is 24, the other number is

Options :

1. ✗ 12
2. ✓ 18
3. ✗ 36
4. ✗ 72

Question Number : 92 Question Id : 92 Question Type : MCQ Option Shuffling : No

Correct : 1.0 Wrong : 0.33

The largest number which divides by 72 and 125, leaving remainders 7 and 8 respectively is

Options :

1. ✓ 13
2. ✗ 56
3. ✗ 65
4. ✗ 900

Question Number : 93 Question Id : 93 Question Type : MCQ Option Shuffling : No

Correct : 1.0 Wrong : 0.33

If $a : b = 3 : 5$ and $b : c = 2 : 3$, then $a : c$ is

Options :

1. ✘ 3 : 2
2. ✔ 2 : 5
3. ✘ 5 : 2
4. ✘ 5 : 8

Question Number : 94 Question Id : 94 Question Type : MCQ Option Shuffling : No
Correct : 1.0 Wrong : 0.33

Which of the following numbers are in proportion

Options :

1. ✘ 12, 27, 54, 24
2. ✘ 27, 12, 24, 54
3. ✔ 12, 27, 24, 54
4. ✘ 54, 24, 12, 27

Question Number : 95 Question Id : 95 Question Type : MCQ Option Shuffling : No
Correct : 1.0 Wrong : 0.33

Successive discounts of 20% and 10% are equivalent to a single discount of

Options :

1. ✘ 25%
2. ✘ 26%
3. ✔ 28%
4. ✘ 30%

Question Number : 96 Question Id : 96 Question Type : MCQ Option Shuffling : No
Correct : 1.0 Wrong : 0.33

If ₹ 200 becomes ₹ 240 in 4 years, then the rate of simple interest per annum is

Options :

1. ✘ $\frac{25}{6}$ %
2. ✘ $\frac{25}{3}$ %
3. ✘ $\frac{25}{2}$ %
4. ✔ 5%

Question Number : 97 Question Id : 97 Question Type : MCQ Option Shuffling : No

Correct : 1.0 Wrong : 0.33

A sum of money doubles itself in 5 years when the interest is compounded annually. The number of years when it will become eight times is

Options :

1. ✘ 10
2. ✘ 12
3. ✔ 15
4. ✘ 20

Question Number : 98 Question Id : 98 Question Type : MCQ Option Shuffling : No

Correct : 1.0 Wrong : 0.33

If CP of 10 articles is equal to SP of 8 articles, then in the whole transaction there is a

Options :

1. ✘ Profit of 20%
2. ✘ Loss of 20%
3. ✘ Loss of 25%
4. ✔ Profit of 25%

Question Number : 99 Question Id : 99 Question Type : MCQ Option Shuffling : No

Correct : 1.0 Wrong : 0.33

To gain 25% after allowing a discount of 10%, the shopkeeper should mark the price of the article which cost him ₹360 as

Options :

1. ✘ ₹ 450
2. ✘ ₹ 460
3. ✘ ₹ 486
4. ✔ ₹ 500

Question Number : 100 Question Id : 100 Question Type : MCQ Option Shuffling : No

Correct : 1.0 Wrong : 0.33

A shopkeeper mixes 26 kg of tea which costs him ₹ 800 per kg with 30 kg of tea which costs him ₹ 1440 per kg. He sells the mixed tea at ₹ 1200 per kg. His gain is

Options :

1. ✔ 5%

2. ✘ 8%

3. ✘ 9%

4. ✘ 10%

Question Number : 101 Question Id : 101 Question Type : MCQ Option Shuffling : No

Correct : 1.0 Wrong : 0.33

In two vessels A and B, milk and water are in the ratio of 4 : 3 and 3 : 5 respectively.

The ratio in which these are to be mixed to obtain new mixture which contains half milk and half water is

Options :

1. ✔ 7 : 4

2. ✘ 7 : 8

3. ✘ 1 : 2

4. ✘ 4 : 5

Question Number : 102 Question Id : 102 Question Type : MCQ Option Shuffling : No

Correct : 1.0 Wrong : 0.33

Speed of a boat in still water is 3 km/hr. the speed of the stream is 2 km/hr. The time taken to go 4 km downstream in minutes is

Options :

1. ✘ 120

2. ✘ 96

3. ✘ 80

4. ✔ 48

Question Number : 103 Question Id : 103 Question Type : MCQ Option Shuffling : No

Correct : 1.0 Wrong : 0.33

A train 100 m long is moving at 68 km/h. The time in seconds, it will take to pass another train 150 m long which is moving at 50 km/h in the same direction from the moment they meet is

Options :

1. ✘ 20

2. ✘ 30

3. ✔ 50

4. ✘ 70

Question Number : 104 Question Id : 104 Question Type : MCQ Option Shuffling : No

Correct : 1.0 Wrong : 0.33

A and B can do a piece of work in 8 days. A alone can do the same work in 12 days.

The number of days in which B alone can do the same work is

Options :

1. ✘ 20

2. ✔ 24

3. ✘ 40

4. ✘ 48

Question Number : 105 Question Id : 105 Question Type : MCQ Option Shuffling : No

Correct : 1.0 Wrong : 0.33

P and Q can do a piece of work in 12 days, Q and R in 15 days and R and P in 20 days.

In how many days P alone can do the same work?

Options :

1. ✘ 15

2. ✔ 30

3. ✘ 23.5

4. ✘ 35

Question Number : 106 Question Id : 106 Question Type : MCQ Option Shuffling : No

Correct : 1.0 Wrong : 0.33

The average of 5 numbers is 40. If one number is excluded then the average becomes 38. The excluded number is

Options :

1. ✔ 48

2. ✘ 58

3. ✘ 60

4. ✘ 78

Question Number : 107 Question Id : 107 Question Type : MCQ Option Shuffling : No

Correct : 1.0 Wrong : 0.33

The average of 35 observations is 30. Out of these observations the average of first 18 observations is 30 and the last 18 observations is 40. The 18th observation is

Options :

1. ✘ 180
2. ✘ 190
3. ✘ 200
4. ✔ 210

Question Number : 108 Question Id : 108 Question Type : MCQ Option Shuffling : No

Correct : 1.0 Wrong : 0.33

The 18th term of the A.P. whose first two terms are -3 and 4 respectively is

Options :

1. ✘ 14
2. ✔ 116
3. ✘ 122
4. ✘ -122

Question Number : 109 Question Id : 109 Question Type : MCQ Option Shuffling : No

Correct : 1.0 Wrong : 0.33

The third term of a G.P. is 2 . The product of its first five terms is

Options :

1. ✘ 2^6
2. ✔ 2^5
3. ✘ 2^4
4. ✘ 2^3

Question Number : 110 Question Id : 110 Question Type : MCQ Option Shuffling : No

Correct : 1.0 Wrong : 0.33

A tower stands vertically on the ground. From a point on the ground which is 30 m away from the foot of the tower, the angle of elevation of the top of the tower is 60° . The height of the tower is

Options :

1. ✔ $30\sqrt{3}$ m
2. ✘ $10\sqrt{3}$ m
3. ✘ 15 m
4. ✘ 6 m

For the above question, User had specified 'ignore' during keys upload.

Question Number : 111 Question Id : 111 Question Type : MCQ Option Shuffling : No

Correct : 1.0 Wrong : 0.33

From a point on the bridge across a river the angles of depression of the banks on the opposite side of the river are 30° and 45° respectively. If the bridge is at a height of 4m from the bank, the width of the river is

Options :

1. ✘ $4(\sqrt{3} - 1)$ m

2. ✘ $2(2\sqrt{3} - 1)$ m

3. ✔ $4(\sqrt{3} + 1)$ m

4. ✘ $2(2\sqrt{3} + 1)$ m

Question Number : 112 Question Id : 112 Question Type : MCQ Option Shuffling : No

Correct : 1.0 Wrong : 0.33

If $(x + 1)$ is a factor of $x^4 - ax^3 + 2x^2 - 3x + 1$, then a is equal to

Options :

1. ✘ 4

2. ✘ 3

3. ✘ -3

4. ✔ -7

Question Number : 113 Question Id : 113 Question Type : MCQ Option Shuffling : No

Correct : 1.0 Wrong : 0.33

One of the factor of $(25x^2 - 1) + (1 + 5x)^2$ is

Options :

1. ✔ $10x$

2. ✘ $5 + x$

3. ✘ $5 - x$

4. ✘ $5x - 1$

Question Number : 114 Question Id : 114 Question Type : MCQ Option Shuffling : No

Correct : 1.0 Wrong : 0.33

All values of k for which $x^2 + kx + 9 = 0$ has real roots is

Options :

1. ✘ $k > 6$

2. ✘ $k \geq 6$

3. ✔ $6 \leq k \leq -6$

4. ✘ $-6 \leq k \leq 6$

Question Number : 115 Question Id : 115 Question Type : MCQ Option Shuffling : No

Correct : 1.0 Wrong : 0.33

The sum and product of the roots of the equation $x^2 - 4x + 3 = 0$ are respectively

Options :

1. ✘ 3, -4

2. ✘ 4, -3

3. ✘ -4, -3

4. ✔ 4, 3

Question Number : 116 Question Id : 116 Question Type : MCQ Option Shuffling : No

Correct : 1.0 Wrong : 0.33

The first capital of British Colonial India was

Options :

1. ✘ Delhi

2. ✘ Mumbai

3. ✔ Kolkata

4. ✘ Madras

Question Number : 117 Question Id : 117 Question Type : MCQ Option Shuffling : No

Correct : 1.0 Wrong : 0.33

What was unexpected at the end of the battle of Waterloo?

A. Duke of Wellington lost

B. Napoleon Bonaparte won

C. Duke of wellington won

D. Napoleon Bonaparte lost

The correct response would be

Options :

1. ✘ A

2. ✘ B

3. ✘ B and C

4. ✔ C and D

Question Number : 118 Question Id : 118 Question Type : MCQ Option Shuffling : No
Correct : 1.0 Wrong : 0.33

Who founded the Indian National congress?

Options :

1. ✔ Allan Octavian Hume

2. ✘ Womesh Chandra Banerji

3. ✘ Gopal Krishna Gokhale

4. ✘ Rash Behari Bose

Question Number : 119 Question Id : 119 Question Type : MCQ Option Shuffling : No
Correct : 1.0 Wrong : 0.33

What are plate tectonics?

Options :

1. ✔ Movement of plates supporting the continents

2. ✘ Volcanic eruptions

3. ✘ Term for erosion of land in the Himalayan region

4. ✘ Mountain formation due to collision of plates

Question Number : 120 Question Id : 120 Question Type : MCQ Option Shuffling : No
Correct : 1.0 Wrong : 0.33

One region of India with high railway density is from Chhattisgarh to Jharkhand because of

Options :

1. ✘ Industrialization

2. ✘ Agricultural produce

3. ✔ Mineral deposits

4. ✘ Large population

Question Number : 121 Question Id : 121 Question Type : MCQ Option Shuffling : No
Correct : 1.0 Wrong : 0.33

What Saraswati river is to the Triveni Sangam or confluence of rivers at Allahabad, _____ is to confluence of rivers at Coorg.
Mark the option which can fill the blank in the statement.

Options :

1. ✓ Shujyothi
2. ✗ Krishna
3. ✗ Godavari
4. ✗ Meghna

Question Number : 122 Question Id : 122 Question Type : MCQ Option Shuffling : No
Correct : 1.0 Wrong : 0.33

What is meant by secularism?

Having

Options :

1. ✗ an elected person as head of state
2. ✗ a culture of equal treatment to all without discrimination
3. ✗ a government of the people, by the people and for the people
4. ✓ the freedom to preach, practice and profess any religion

Question Number : 123 Question Id : 123 Question Type : MCQ Option Shuffling : No
Correct : 1.0 Wrong : 0.33

The UN Public service award 2015 for eliminating open defecation has been given to

Options :

1. ✗ Surat in Gujarat
2. ✗ Gorakhpur in Uttar Pradesh
3. ✓ Nadia in West Bengal
4. ✗ Mahabaleshwar in Maharashtra

Question Number : 124 Question Id : 124 Question Type : MCQ Option Shuffling : No
Correct : 1.0 Wrong : 0.33

A freedom not granted to citizens by the Indian Constitution is

Options :

1. ✗ to reside and settle in any part of India
2. ✗ move freely throughout Indian territory
3. ✓ assemble peacefully even with arms

4. ✘ form associations and Unions

Question Number : 125 Question Id : 125 Question Type : MCQ Option Shuffling : No

Correct : 1.0 Wrong : 0.33

In PM Narendra Modi's recent visit to Korea, one important issue of discussion with their president was

Options :

1. ✔ building a variety of skills in the youth
2. ✘ building bridges across rivers
3. ✘ developing international understanding
4. ✘ exploring natural resources

Question Number : 126 Question Id : 126 Question Type : MCQ Option Shuffling : No

Correct : 1.0 Wrong : 0.33

At the airport, a suitcase was offloaded from a trolley and lay there till someone came and pushed it away. Which one of Newton's Laws of motion explains this?

Options :

1. ✔ Newton's first law of motion
2. ✘ Newton's second law of motion
3. ✘ Newton's third law of motion
4. ✘ Partially the second and partially the third law

Question Number : 127 Question Id : 127 Question Type : MCQ Option Shuffling : No

Correct : 1.0 Wrong : 0.33

Eclipse happens because light

Options :

1. ✘ travels in waves
2. ✔ travels in straight lines
3. ✘ travels with great speed
4. ✘ rays are static

Question Number : 128 Question Id : 128 Question Type : MCQ Option Shuffling : No

Correct : 1.0 Wrong : 0.33

A magnet attracts filings made of

Options :

1. ✘ Only Iron

2. ✓ Iron and Steel

3. ✗ Brass and Iron

4. ✗ Brass, Iron and Steel

Question Number : 129 Question Id : 129 Question Type : MCQ Option Shuffling : No

Correct : 1.0 Wrong : 0.33

Bleaching powder is manufactured through a reaction between

Options :

1. ✓ Flaked lime and chlorine

2. ✗ Quick lime and chlorine

3. ✗ Washing soda and ammonia

4. ✗ Baking soda and iodine

Question Number : 130 Question Id : 130 Question Type : MCQ Option Shuffling : No

Correct : 1.0 Wrong : 0.33

What is likely to happen if the supply of coffee goes up?

Options :

1. ✗ The demand for tea goes up

2. ✓ The price of coffee goes down

3. ✗ There is no change in the demand for tea

4. ✗ Demand for tea escalates and price of coffee diminishes

Question Number : 131 Question Id : 131 Question Type : MCQ Option Shuffling : No

Correct : 1.0 Wrong : 0.33

It is possible to make LPG available in a cylinder because of its

Options :

1. ✗ Inflammability

2. ✗ Dispersibility

3. ✓ Compressibility

4. ✗ Diffusability

Question Number : 132 Question Id : 132 Question Type : MCQ Option Shuffling : No

Correct : 1.0 Wrong : 0.33

If you uproot a cucumber plant, what kind of a change will it be?

Options :

1. ✘ Physical only
2. ✘ Chemical only
3. ✔ Both physical and chemical change
4. ✘ Neither physical nor chemical just organic

Question Number : 133 Question Id : 133 Question Type : MCQ Option Shuffling : No
Correct : 1.0 Wrong : 0.33

What is PPP (Purchasing Power Parity)?

Options :

1. ✔ Method of measuring relative purchasing power of currencies of different countries
2. ✘ Ability to purchase commodities by citizens of different states of a country
3. ✘ A measure of socioeconomic development of a nation
4. ✘ An index for purchasing power of citizens of neighbouring countries.

Question Number : 134 Question Id : 134 Question Type : MCQ Option Shuffling : No
Correct : 1.0 Wrong : 0.33

Which nationalized bank presently has a Woman as its CEO?

Options :

1. ✘ Indian Overseas Bank
2. ✔ State Bank of India
3. ✘ Punjab National Bank
4. ✘ Central Bank on India

Question Number : 135 Question Id : 135 Question Type : MCQ Option Shuffling : No
Correct : 1.0 Wrong : 0.33

RuBP enzyme is required for

Options :

1. ✔ Photosynthesis
2. ✘ Chemosynthesis
3. ✘ Both Photosynthesis and Chemosynthesis
4. ✘ Excretion of urea

Question Number : 136 Question Id : 136 Question Type : MCQ Option Shuffling : No
Correct : 1.0 Wrong : 0.33

One of the following is not a 'social insect'

Options :

1. ✘ Ant
2. ✔ Beetle
3. ✘ Termite
4. ✘ Wasp

Question Number : 137 Question Id : 137 Question Type : MCQ Option Shuffling : No
Correct : 1.0 Wrong : 0.33

Who coined the phrase 'Survival of the fittest' to mean Natural Selection?

Options :

1. ✘ Charles Darwin
2. ✘ Bertrand Russell
3. ✘ JBS Haldane
4. ✔ Herbert Spencer

Question Number : 138 Question Id : 138 Question Type : MCQ Option Shuffling : No
Correct : 1.0 Wrong : 0.33

The record of a country's transaction in goods and assets with the rest of the world is its

Options :

1. ✘ Capital amount
2. ✘ Current amount
3. ✔ Balance of payment
4. ✘ Balance of trade

Question Number : 139 Question Id : 139 Question Type : MCQ Option Shuffling : No
Correct : 1.0 Wrong : 0.33

The Champion's League Trophy is given for

Options :

1. ✔ the best club in Soccer
2. ✘ best player of team in Basket ball
3. ✘ maximum goal maker in Hockey
4. ✘ man of the match in Cricket

Question Number : 140 Question Id : 140 Question Type : MCQ Option Shuffling : No
Correct : 1.0 Wrong : 0.33

Cricket batsman has to leave the field for "hit wicket" when

Options :

1. ✘ Ball hits leg before bat
2. ✘ Keeper removes the bail
3. ✘ Bat hits any fielder
4. ✔ Wicket is touched by bat or body of the batsman

Question Number : 141 Question Id : 141 Question Type : MCQ Option Shuffling : No

Correct : 1.0 Wrong : 0.33

C is married to A, sister of D. B is the father of E, who is the son of D. G is the sister of E. How is G related to C?

Options :

1. ✘ nephew
2. ✔ niece
3. ✘ sister-in-law
4. ✘ sister

Question Number : 142 Question Id : 142 Question Type : MCQ Option Shuffling : No

Correct : 1.0 Wrong : 0.33

The first two numbers on the left of the sign '::' are related in a certain way. The same relationship holds for the second pair of numbers on the right side of the sign '::' of which one is missing. Find the missing one from the alternatives.

14 : 49 :: 18 : ?

Options :

1. ✘ 56
2. ✘ 59
3. ✔ 63
4. ✘ 85

Question Number : 143 Question Id : 143 Question Type : MCQ Option Shuffling : No

Correct : 1.0 Wrong : 0.33

The two words on the left side of the sign '::' are related in a certain way. The same relationship holds for the second pair of words on the right side of the sign '::' of which one is missing. Find the missing one from the alternatives.

East : North-West :: North : ?

Options :

1. ✘ West

2. ✘ South-East
3. ✘ North-East
4. ✔ South-West

Question Number : 144 Question Id : 144 Question Type : MCQ Option Shuffling : No

Correct : 1.0 Wrong : 0.33

Among six objects, B weighs half as much as E. F weighs two and half times as much as C. A weighs half as much as D and twice as much as C. D weighs three times as much as E. Which is the correct sequence of weights in descending order?

Options :

1. ✔ DFAECB
2. ✘ DAFECB
3. ✘ BCEAFD
4. ✘ DFACEB

Question Number : 145 Question Id : 145 Question Type : MCQ Option Shuffling : No

Correct : 1.0 Wrong : 0.33

Arrange the following words in a meaningful logical sequence and choose the appropriate number sequence from the alternatives.

1. Education 2. Salary 3. Child 4. Apply 5. Infant 6. Employment

Options :

1. ✘ 5, 3, 1, 4, 2, 6
2. ✘ 5, 3, 1, 6, 2, 4
3. ✘ 3, 5, 1, 4, 6, 2
4. ✔ 5, 3, 1, 4, 6, 2

Question Number : 146 Question Id : 146 Question Type : MCQ Option Shuffling : No

Correct : 1.0 Wrong : 0.33

The numbers in each group are related in a certain way. Choose the correct number from among the alternatives that will replace the question mark.

(3 [9] 6) (7 [25] 12) (11 [?] 15)

Options :

1. ✘ 28
2. ✔ 16
3. ✘ 32

4. ✘ 36

Question Number : 147 Question Id : 147 Question Type : MCQ Option Shuffling : No

Correct : 1.0 Wrong : 0.33

In a certain language, '792' means 'God is good'; '847' means 'rose is beautiful'; and '546' means 'children are beautiful'. Which digit means 'rose' in that language?

Options :

1. ✔ 8

2. ✘ 7

3. ✘ 2

4. ✘ 9

Question Number : 148 Question Id : 148 Question Type : MCQ Option Shuffling : No

Correct : 1.0 Wrong : 0.33

If 'DIRECTION' is coded as 'RIDTCENOI', then 'INTRODUCE' would be coded as:

Options :

1. ✘ TNIDROEUC

2. ✔ TNIDORECU

3. ✘ ECUDORTNI

4. ✘ TNIDOREUC

Question Number : 149 Question Id : 149 Question Type : MCQ Option Shuffling : No

Correct : 1.0 Wrong : 0.33

A clock is placed on the table in such a way that at 5.15 pm, the minute hand points to South. In which direction, the hour hand will point at 7.30 pm?

Options :

1. ✔ North-West

2. ✘ North-East

3. ✘ West

4. ✘ South-East

Question Number : 150 Question Id : 150 Question Type : MCQ Option Shuffling : No

Correct : 1.0 Wrong : 0.33

The numbers in the matrix given below follow a certain trend row-wise and and/or column wise. Study the trend and choose the number which will replace the question mark?

6	27	9
8	28	7
11	?	4

Options :

1. ✘ 33

2. ✘ 29

3. ✔ 22

4. ✘ 31

Railway Recruitment Board

Notations :

- Options shown in green color and with ✓ icon are correct.
- Options shown in red color and with ✗ icon are incorrect.

Question Paper Name:	Junior Engineer 26th Aug Shift 2 Actual
Subject Name:	Junior Engineer
Creation Date:	2015-08-18 12:49:17.0
Cut Off:	0
Duration:	120
Number of Questions:	150
Total Marks:	150.0

Junior Engineer

Group Number :	1
Group Id :	2
Group Maximum Duration :	0
Group Minimum Duration :	120
Revisit allowed for view? :	No
Revisit allowed for edit? :	No
Break time:	0
Group Marks:	150.0

Junior Engineer

Section Id :	2
Section Number :	1
Section type :	Online
Mandatory or Optional:	Mandatory
Number of Questions:	150
Number of Questions to be attempted:	150
Section Marks:	150.0

Sub-Section Number:	1
Sub-Section Id:	2
Question Shuffling Allowed :	Yes

Question Number : 1 Question Id : 151 Question Type : MCQ Option Shuffling : No
Correct : 1.0 Wrong : 0.33

A system and its environment put together constitute

Options :

- ✗ An adiabatic system
- ✓ An isolated system

3. ✘ A segregated system
4. ✘ A homogeneous system

Question Number : 2 Question Id : 152 Question Type : MCQ Option Shuffling : No
Correct : 1.0 Wrong : 0.33

Slope of constant volume line on temperature entropy diagram is given by

Options :

1. ✘ C_p/T
2. ✘ T/C_p
3. ✘ C_v/T
4. ✔ T/C_v

Question Number : 3 Question Id : 153 Question Type : MCQ Option Shuffling : No
Correct : 1.0 Wrong : 0.33

Stefen Boltzman law is applicable to

Options :

1. ✘ Gray body
2. ✘ White body
3. ✔ Black body
4. ✘ Blue body

Question Number : 4 Question Id : 154 Question Type : MCQ Option Shuffling : No
Correct : 1.0 Wrong : 0.33

Heat is transferred by conduction, convection and radiation in

Options :

1. ✘ Insulated pipes carrying hot water
2. ✘ Refrigerator freezer coils
3. ✘ Melting of ice
4. ✔ Boiler furnaces

Question Number : 5 Question Id : 155 Question Type : MCQ Option Shuffling : No
Correct : 1.0 Wrong : 0.33

A four stroke diesel engine has

Options :

1. ✘ One valve

- 2. ✘ Two valves
- 3. ✔ Three valves
- 4. ✘ Four valves

Question Number : 6 Question Id : 156 Question Type : MCQ Option Shuffling : No

Correct : 1.0 Wrong : 0.33

A certain engine produces 10kw indicated power. Its mechanical efficiency is 70%. Then the frictional power is

Options :

- 1. ✘ 2 kw
- 2. ✘ 2.5 kw
- 3. ✔ 3 kw
- 4. ✘ 3.5 kw

Question Number : 7 Question Id : 157 Question Type : MCQ Option Shuffling : No

Correct : 1.0 Wrong : 0.33

Morse test is applicable only to

Options :

- 1. ✘ Single cylinder SI engines
- 2. ✘ Single cylinder CI engines
- 3. ✘ Multi-cylinder CI engines
- 4. ✔ Multi-cylinder SI and CI engines

Question Number : 8 Question Id : 158 Question Type : MCQ Option Shuffling : No

Correct : 1.0 Wrong : 0.33

The consumable electrode is used in

Options :

- 1. ✘ Carbon arc welding
- 2. ✘ Submerged arc welding
- 3. ✘ TIG welding
- 4. ✔ MIG Welding

Question Number : 9 Question Id : 159 Question Type : MCQ Option Shuffling : No

Correct : 1.0 Wrong : 0.33

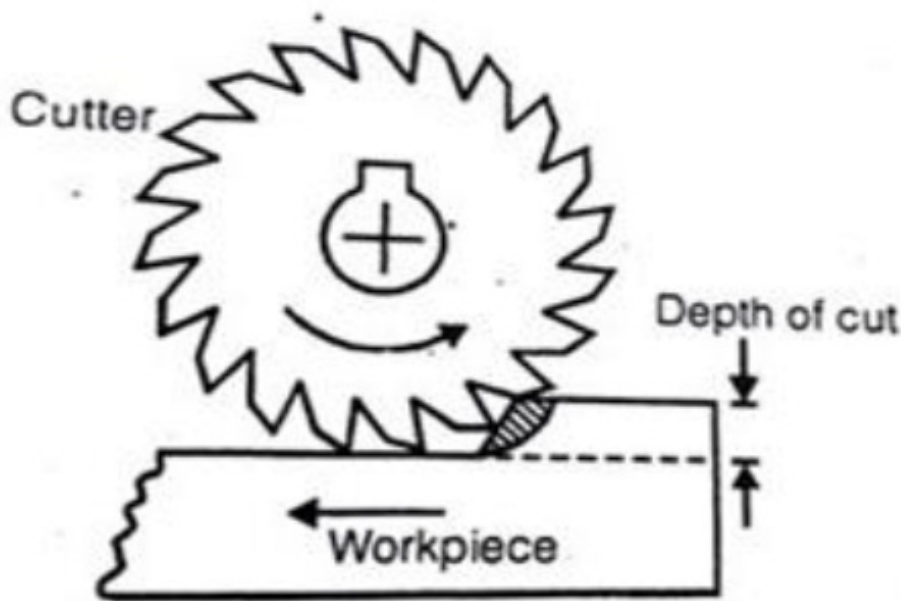
The phenomenon of weld decay occurs in

Options :

1. ✘ Cast iron
2. ✘ Brass
3. ✘ Bronze
4. ✔ Stainless steel

Question Number : 10 Question Id : 160 Question Type : MCQ Option Shuffling : No
Correct : 1.0 Wrong : 0.33

The given figure represents



Options :

1. ✔ Up milling
2. ✘ Down milling
3. ✘ Climb milling
4. ✘ Angular milling

Question Number : 11 Question Id : 161 Question Type : MCQ Option Shuffling : No
Correct : 1.0 Wrong : 0.33

In sand moulding the bottom flask is called

Options :

1. ✘ Cope
2. ✔ Drag
3. ✘ Fillet
4. ✘ Riddle

Question Number : 12 Question Id : 162 Question Type : MCQ Option Shuffling : No
Correct : 1.0 Wrong : 0.33

Cast iron pipes are cast by

Options :

1. ✘ Die casting process
2. ✔ Centrifugal casting process
3. ✘ Investment casting process
4. ✘ Vaccum Moulding process

Question Number : 13 Question Id : 163 Question Type : MCQ Option Shuffling : No
Correct : 1.0 Wrong : 0.33

Swagging is an operation of

Options :

1. ✘ Hot rolling
2. ✔ Forging
3. ✘ Extrusion
4. ✘ Piercing

Question Number : 14 Question Id : 164 Question Type : MCQ Option Shuffling : No
Correct : 1.0 Wrong : 0.33

In Die cutting operation, punching a number of holes in a sheet is called

Options :

1. ✔ Perforating
2. ✘ Parting
3. ✘ Notching
4. ✘ Lancing

Question Number : 15 Question Id : 165 Question Type : MCQ Option Shuffling : No
Correct : 1.0 Wrong : 0.33

The flow of current in solids is due to

Options :

1. ✔ electrons
2. ✘ electrons and ions

3. ✘ atoms

4. ✘ atoms and nucleus

Question Number : 16 Question Id : 166 Question Type : MCQ Option Shuffling : No
Correct : 1.0 Wrong : 0.33

Ohm's law is applicable for

Options :

1. ✔ conductors only

2. ✘ superconductors only

3. ✘ conductors and semiconductors

4. ✘ semiconductors only

Question Number : 17 Question Id : 167 Question Type : MCQ Option Shuffling : No
Correct : 1.0 Wrong : 0.33

"The algebraic sum of all the currents meeting at a point in a circuit is equal to zero." This statement is

Options :

1. ✔ Kirchoff's Junction Rule

2. ✘ Ampere Circuital Law

3. ✘ Kirchoff's loop Rule

4. ✘ Lenz Rule

Question Number : 18 Question Id : 168 Question Type : MCQ Option Shuffling : No
Correct : 1.0 Wrong : 0.33

In a DC generator, the critical resistance refers to the resistance of

Options :

1. ✘ brushes

2. ✔ field

3. ✘ armature

4. ✘ load

Question Number : 19 Question Id : 169 Question Type : MCQ Option Shuffling : No
Correct : 1.0 Wrong : 0.33

A transformer core is laminated in order to prevent

Options :

1. ✘ current leakage

2. ✓ eddy currents loss

3. ✗ oil leakage

4. ✗ hysteresis loss

Question Number : 20 Question Id : 170 Question Type : MCQ Option Shuffling : No

Correct : 1.0 Wrong : 0.33

HRC fuses on a transformer provide protection against

Options :

1. ✗ insulation failure

2. ✗ internal faults

3. ✓ external faults

4. ✗ low oil level

Question Number : 21 Question Id : 171 Question Type : MCQ Option Shuffling : No

Correct : 1.0 Wrong : 0.33

Buchholz's relay is used in

Options :

1. ✗ motor protection

2. ✗ line protection

3. ✗ generator protection

4. ✓ transformer protection

Question Number : 22 Question Id : 172 Question Type : MCQ Option Shuffling : No

Correct : 1.0 Wrong : 0.33

The stator frame in an induction motor is used

Options :

1. ✗ to protect the whole machine

2. ✗ to ventilate the armature

3. ✓ as a return path for flux

4. ✗ to hold the armature stampings

Question Number : 23 Question Id : 173 Question Type : MCQ Option Shuffling : No

Correct : 1.0 Wrong : 0.33

The starting winding of a single phase winding resides in

Options :

1. ✘ armature
2. ✘ field
3. ✘ rotor
4. ✔ stator

Question Number : 24 Question Id : 174 Question Type : MCQ Option Shuffling : No

Correct : 1.0 Wrong : 0.33

Galvanising is a process of applying a layer of zinc on metal surface. It is also known as

Options :

1. ✘ electrorefining
2. ✘ anoding
3. ✔ electroplating
4. ✘ cathoding

Question Number : 25 Question Id : 175 Question Type : MCQ Option Shuffling : No

Correct : 1.0 Wrong : 0.33

A single transistor can be used to build which of the following logic gates

Options :

1. ✘ OR
2. ✘ AND
3. ✘ NOR
4. ✔ NOT

Question Number : 26 Question Id : 176 Question Type : MCQ Option Shuffling : No

Correct : 1.0 Wrong : 0.33

Which of the following expressions represents logical AND gate?

Options :

1. ✘ $A+B$
2. ✘ A/B
3. ✘ $A>B$
4. ✔ $A.B$

Question Number : 27 Question Id : 177 Question Type : MCQ Option Shuffling : No

Correct : 1.0 Wrong : 0.33

Substances which generate potential difference when exposed to light are known as

Options :

1. ✓ photo voltaic material
2. ✗ light generators
3. ✗ thermoelectric generators
4. ✗ volt generators

Question Number : 28 Question Id : 178 Question Type : MCQ Option Shuffling : No

Correct : 1.0 Wrong : 0.33

Most commonly used control element in voltage regulators is

Options :

1. ✓ BJT
2. ✗ UJT
3. ✗ FET
4. ✗ SBS

Question Number : 29 Question Id : 179 Question Type : MCQ Option Shuffling : No

Correct : 1.0 Wrong : 0.33

In a differential amplifier, an ideal CMRR is

Options :

1. ✓ infinity
2. ✗ zero
3. ✗ +1
4. ✗ -1

Question Number : 30 Question Id : 180 Question Type : MCQ Option Shuffling : No

Correct : 1.0 Wrong : 0.33

What is the equivalent of decimal 14 in binary?

Options :

1. ✓ 1110
2. ✗ 1011
3. ✗ 1101
4. ✗ 1111

Question Number : 31 Question Id : 181 Question Type : MCQ Option Shuffling : No

Correct : 1.0 Wrong : 0.33

How many electrons are there in the valence shell of a pure semiconductor?

Options :

1. ✘ 1
2. ✘ 3
3. ✔ 4
4. ✘ 6

Question Number : 32 Question Id : 182 Question Type : MCQ Option Shuffling : No

Correct : 1.0 Wrong : 0.33

Exclusive-OR (XOR) logic gates can be constructed from what other logic gates?

Options :

1. ✘ OR gates only
2. ✘ AND gates and NOT gates
3. ✔ AND gates, OR gates, and NOT gates
4. ✘ OR gates and NOT gates

Question Number : 33 Question Id : 183 Question Type : MCQ Option Shuffling : No

Correct : 1.0 Wrong : 0.33

The process of mixing AF signal and RF waves is known as

Options :

1. ✔ modulation
2. ✘ demodulation
3. ✘ oscillation
4. ✘ amplification

Question Number : 34 Question Id : 184 Question Type : MCQ Option Shuffling : No

Correct : 1.0 Wrong : 0.33

The main advantage of frequency modulation over amplitude modulation is

Options :

1. ✘ that there will be no distortion
2. ✘ that the complete information is contained in the side bands
3. ✘ that it uses a wider band of frequencies
4. ✔ the elimination of noises

Question Number : 35 Question Id : 185 Question Type : MCQ Option Shuffling : No

Correct : 1.0 Wrong : 0.33

If the modulus of elasticity is zero, the material is said to be

Options :

1. ✘ Rigid
2. ✘ Elastic
3. ✘ Flexible
4. ✔ Plastic

Question Number : 36 Question Id : 186 Question Type : MCQ Option Shuffling : No
Correct : 1.0 Wrong : 0.33

Water content of soil can be

Options :

1. ✔ Greater than 100 %
2. ✘ Less than 0%
3. ✘ Only from 0% to 100%
4. ✘ Never be greater than 100%

Question Number : 37 Question Id : 187 Question Type : MCQ Option Shuffling : No
Correct : 1.0 Wrong : 0.33

The maximum percentage of moment redistribution allowed in RCC beams is

Options :

1. ✘ 10%
2. ✘ 20%
3. ✔ 30%
4. ✘ 40%

Question Number : 38 Question Id : 188 Question Type : MCQ Option Shuffling : No
Correct : 1.0 Wrong : 0.33

Bending compressive and tensile stresses respectively are calculated based on

Options :

1. ✘ Net area and gross area
2. ✔ Gross area and net area
3. ✘ Net area in both cases
4. ✘ Gross area in both cases

Question Number : 39 Question Id : 189 Question Type : MCQ Option Shuffling : No

Correct : 1.0 Wrong : 0.33

The liquid used in manometers should have

Options :

1. ✘ Low density
2. ✔ High density
3. ✘ Low surface tension
4. ✘ High surface tension

Question Number : 40 Question Id : 190 Question Type : MCQ Option Shuffling : No

Correct : 1.0 Wrong : 0.33

Which of the following instruments is generally used for base line measurements?

Options :

1. ✘ Chain
2. ✘ Metallic tape
3. ✘ Steel tape
4. ✔ Invar tape

Question Number : 41 Question Id : 191 Question Type : MCQ Option Shuffling : No

Correct : 1.0 Wrong : 0.33

In a bar chart the vertical axis represents

Options :

1. ✘ Time
2. ✘ Types of activities
3. ✘ Number of labours
4. ✔ Various activities of the project

Question Number : 42 Question Id : 192 Question Type : MCQ Option Shuffling : No

Correct : 1.0 Wrong : 0.33

Initial setting time is maximum for

Options :

1. ✘ Portland-Pozzolana cement
2. ✘ Portland-Slag cement
3. ✔ Low heat portland-pozzolana cement

4. ✘ High strength portland cement

Question Number : 43 Question Id : 193 Question Type : MCQ Option Shuffling : No

Correct : 1.0 Wrong : 0.33

The viscosity of a gas

Options :

1. ✘ Decreases with increase in temperature
2. ✔ Increases with increase in temperature
3. ✘ is independent of temperature
4. ✘ is independent of pressure for very high pressure intensities

Question Number : 44 Question Id : 194 Question Type : MCQ Option Shuffling : No

Correct : 1.0 Wrong : 0.33

In an internal focussing type of telescope, the lens provided is

Options :

1. ✔ Concave
2. ✘ Convex
3. ✘ Plano-convex
4. ✘ Plano-concave

Question Number : 45 Question Id : 195 Question Type : MCQ Option Shuffling : No

Correct : 1.0 Wrong : 0.33

Void ratio of a soil mass can

Options :

1. ✘ Never be greater than unity
2. ✘ Be zero
3. ✔ Take any value greater than zero
4. ✘ Take values between 0 and 1 only

Question Number : 46 Question Id : 196 Question Type : MCQ Option Shuffling : No

Correct : 1.0 Wrong : 0.33

The main ingredients of portland cement are

Options :

1. ✔ Lime and silica
2. ✘ Lime and alumina

3. ✘ Silica and alumina

4. ✘ Lime and iron

Question Number : 47 Question Id : 197 Question Type : MCQ Option Shuffling : No

Correct : 1.0 Wrong : 0.33

Which of the following devices should be used for accurate measurement of low D.C. voltage?

Options :

1. ✘ Small range moving coil voltmeter

2. ✔ D.C. potentiometer

3. ✘ Small range thermocouple voltmeter

4. ✘ Hot wire voltmeter

Question Number : 48 Question Id : 198 Question Type : MCQ Option Shuffling : No

Correct : 1.0 Wrong : 0.33

A direct current can be measured by

Options :

1. ✘ a D.C. potentiometer directly

2. ✔ a D.C. potentiometer in conjunction with a standard resistance

3. ✘ a D.C. potentiometer in conjunction with a volt ratio box

4. ✘

a D.C. potentiometer in conjunction with volt ratio box and standard resistance

Question Number : 49 Question Id : 199 Question Type : MCQ Option Shuffling : No

Correct : 1.0 Wrong : 0.33

Basically a potentiometer is a device for

Options :

1. ✔ comparing two voltages

2. ✘ measuring a current

3. ✘ comparing two currents

4. ✘ measuring a voltage

Question Number : 50 Question Id : 200 Question Type : MCQ Option Shuffling : No

Correct : 1.0 Wrong : 0.33

In order to achieve high accuracy, the slide wire of a potentiometer should be

Options :

1. ✔ as long as possible

2. ✘ as short as possible
3. ✘ neither too small nor too large
4. ✘ very thick

Question Number : 51 Question Id : 201 Question Type : MCQ Option Shuffling : No
Correct : 1.0 Wrong : 0.33

Standard resistor is made from

Options :

1. ✘ platinum
2. ✔ manganese
3. ✘ silver
4. ✘ nichrome

Question Number : 52 Question Id : 202 Question Type : MCQ Option Shuffling : No
Correct : 1.0 Wrong : 0.33

In surface water, the colour produced by colloidal suspension is termed as

Options :

1. ✘ apparent colour
2. ✔ true colour
3. ✘ light colour
4. ✘ dark colour

Question Number : 53 Question Id : 203 Question Type : MCQ Option Shuffling : No
Correct : 1.0 Wrong : 0.33

The stokes equation used for determination of settling velocity of discrete particle is

Options :

1. ✔ $V_s = g (\rho_s - 1) d^2 / 18 \mu$
2. ✘ $V_s = g (\rho_s - 1) d^2 / 18 \nu$
3. ✘ $V_s = g (\rho_s - 1) d / 18 \nu$
4. ✘ $V_s = g d (\rho_s - 1)^2 / 18 \mu$

Question Number : 54 Question Id : 204 Question Type : MCQ Option Shuffling : No
Correct : 1.0 Wrong : 0.33

The amount of oxygen required by microorganisms to decompose the biodegradable organics is called

Options :

1. ✘ oxygen demand
2. ✘ oxygen deficiency
3. ✔ biochemical oxygen demand
4. ✘ chemical oxygen demand

Question Number : 55 Question Id : 205 Question Type : MCQ Option Shuffling : No
Correct : 1.0 Wrong : 0.33

The formation of photochemical smog is caused by

Options :

1. ✔ NO_x, CO, HC, O₃
2. ✘ NO_x, CO₂, HC, O₃
3. ✘ NO_x, Pb, HC, O₃
4. ✘ NO_x, SO_x, HC, O₃

Question Number : 56 Question Id : 206 Question Type : MCQ Option Shuffling : No
Correct : 1.0 Wrong : 0.33

The threshold of sound pressure that a normal healthy person can respond to is

Options :

1. ✘ 0.0002 Pa
2. ✔ 0.00002 Pa
3. ✘ 0.002 Pa
4. ✘ 0.02 Pa

Question Number : 57 Question Id : 207 Question Type : MCQ Option Shuffling : No
Correct : 1.0 Wrong : 0.33

In pre-industrial era the concentration of carbon dioxide, CO₂ was

Options :

1. ✘ 200 ppm
2. ✘ 360 ppm
3. ✔ 265 – 290 ppm
4. ✘ 300 ppm

Question Number : 58 Question Id : 208 Question Type : MCQ Option Shuffling : No
Correct : 1.0 Wrong : 0.33

Which of the following is not a valid category of impact printers?

Options :

1. ✘ Daisy-wheel printers
2. ✘ Line printers
3. ✘ Drum printers
4. ✔ Laser printers

Question Number : 59 Question Id : 209 Question Type : MCQ Option Shuffling : No
Correct : 1.0 Wrong : 0.33

Which of the following is not true about ROM?

Options :

1. ✘ Random access memory
2. ✘ Read only memory
3. ✘ Non-volatile memory
4. ✔ Sequential access memory

Question Number : 60 Question Id : 210 Question Type : MCQ Option Shuffling : No
Correct : 1.0 Wrong : 0.33

Which of the following is a component of Central Processing Unit (CPU)?

Options :

1. ✘ Hard Disk
2. ✘ Keyboard
3. ✔ Registers
4. ✘ Random Access Memory (RAM)

Question Number : 61 Question Id : 211 Question Type : MCQ Option Shuffling : No
Correct : 1.0 Wrong : 0.33

Original ASCII coding scheme uses _____ bits for coding 128 different characters.

Options :

1. ✘ 6
2. ✔ 7
3. ✘ 8
4. ✘ 16

Question Number : 62 Question Id : 212 Question Type : MCQ Option Shuffling : No

Correct : 1.0 Wrong : 0.33

The binary representation of 129.25 is _____

Options :

1. $(10000001.01)_2$
2. $(11000001.01)_2$
3. $(10000011.10)_2$
4. $(10000001.11)_2$

Question Number : 63 Question Id : 213 Question Type : MCQ Option Shuffling : No

Correct : 1.0 Wrong : 0.33

Considering X as a binary variable, the Boolean expression $X + 0$ is equivalent to

Options :

1. X
2. 1
3. 0
4. X'

Question Number : 64 Question Id : 214 Question Type : MCQ Option Shuffling : No

Correct : 1.0 Wrong : 0.33

The 2's complement of the binary number $(10001100)_2$ is

Options :

1. $(01001000)_2$
2. $(01110100)_2$
3. $(00100111)_2$
4. $(11110111)_2$

Question Number : 65 Question Id : 215 Question Type : MCQ Option Shuffling : No

Correct : 1.0 Wrong : 0.33

Windows 7 is a _____

Options :

1. Real-time operating system
2. Multi-user operating system
3. Multi-tasking operating system

4. ✘ Distributed operating system

Question Number : 66 Question Id : 216 Question Type : MCQ Option Shuffling : No
Correct : 1.0 Wrong : 0.33

Class 'A' IP addresses use _____ bits for Host ID.

Options :

- 1. ✘ 8
- 2. ✘ 16
- 3. ✔ 24
- 4. ✘ 32

Question Number : 67 Question Id : 217 Question Type : MCQ Option Shuffling : No
Correct : 1.0 Wrong : 0.33

Which of the following is not a Web browser?

Options :

- 1. ✘ Opera
- 2. ✘ NetSurf
- 3. ✔ WWW
- 4. ✘ Chrome

Question Number : 68 Question Id : 218 Question Type : MCQ Option Shuffling : No
Correct : 1.0 Wrong : 0.33

The R.F. of a scale is

Options :

- 1. ✘ < 1
- 2. ✘ $= 1$
- 3. ✘ > 1
- 4. ✔ any of these

Question Number : 69 Question Id : 219 Question Type : MCQ Option Shuffling : No
Correct : 1.0 Wrong : 0.33

Which of the following methods is not used for drawing elliptical curves?

Options :

- 1. ✘ oblong method
- 2. ✔ tangent method

3. ✘ concentric circles method

4. ✘ intersecting arc method

Question Number : 70 Question Id : 220 Question Type : MCQ Option Shuffling : No

Correct : 1.0 Wrong : 0.33

If a line is parallel to V.P. and inclined to H.P., its top view will be

Options :

1. ✘ a point

2. ✘ a line of larger dimension

3. ✔ a line of smaller dimension

4. ✘ a line of same dimension

Question Number : 71 Question Id : 221 Question Type : MCQ Option Shuffling : No

Correct : 1.0 Wrong : 0.33

In first - angle projection method, the relative positions of the observer, object and plane are

Options :

1. ✘ Plane is placed between observer and object

2. ✘ Observer is placed between object and plane

3. ✔ Object is placed between observer and plane

4. ✘ May be placed in any order

Question Number : 72 Question Id : 222 Question Type : MCQ Option Shuffling : No

Correct : 1.0 Wrong : 0.33

A square lamina is perpendicular to both the reference planes. Its top and front views will be

Options :

1. ✔ the straight lines

2. ✘ the squares

3. ✘ a square and a straight line respectively

4. ✘ a straight line and a square respectively

Question Number : 73 Question Id : 223 Question Type : MCQ Option Shuffling : No

Correct : 1.0 Wrong : 0.33

A 5 kg mass at rest on a frictionless table is acted upon by a constant force of 12 N. The distance travelled by it in 2s is

Options :

1. ✘ 1.2 m
2. ✘ 2.4 m
3. ✔ 4.8 m
4. ✘ 9.6 m

Question Number : 74 Question Id : 224 Question Type : MCQ Option Shuffling : No

Correct : 1.0 Wrong : 0.33

The gravitational force between two bodies kept at a distance d is proportional to

Options :

1. ✘ $1/d$
2. ✘ d
3. ✔ $1/d^2$
4. ✘ d^2

Question Number : 75 Question Id : 225 Question Type : MCQ Option Shuffling : No

Correct : 1.0 Wrong : 0.33

An object of 10 kg is raised through a height of 2 m. The work done is ($g = 9.8 \text{ m/s}^2$)

Options :

1. ✔ 196 J
2. ✘ 98 J
3. ✘ 19.6 J
4. ✘ 4.9 J.

Question Number : 76 Question Id : 226 Question Type : MCQ Option Shuffling : No

Correct : 1.0 Wrong : 0.33

Which of the following statements about sound and light waves is correct?

Options :

1. ✘ Both sound and light waves are transverse
2. ✘ Both sound and light waves are longitudinal
3. ✘ Sound wave is transverse but light wave is longitudinal
4. ✔ Sound wave is longitudinal but light wave is transverse

Question Number : 77 Question Id : 227 Question Type : MCQ Option Shuffling : No

Correct : 1.0 Wrong : 0.33

A beam of light is incident on a surface of a rectangular glass slab ($\mu = 1.52$). If the velocity of the beam before it enters the slab is $3 \times 10^8 \text{ m/s}$, its velocity after emerging from the slab is

Options :

1. ✘ 1.97×10^8 m/s
2. ✔ 3×10^8 m/s
3. ✘ 4.56×10^8 m/s
4. ✘ 1.5×10^8 m/s

Question Number : 78 Question Id : 228 Question Type : MCQ Option Shuffling : No
Correct : 1.0 Wrong : 0.33

Three resistors, each with resistance r , are in series in a circuit. They are replaced by one equivalent resistor of resistance R . Which of the following statements is correct?

Options :

1. ✘ R is smaller than r
2. ✘ The voltage across R equals the voltage across r
3. ✔ The current through R equals the current through r
4. ✘ The power dissipated in R equals the power dissipated in r

Question Number : 79 Question Id : 229 Question Type : MCQ Option Shuffling : No
Correct : 1.0 Wrong : 0.33

According to the law of constant proportions, what mass of oxygen would be present in a sample of carbon dioxide gas containing 3 grams of carbon?

Options :

1. ✘ 3 g
2. ✘ 6 g
3. ✔ 8 g
4. ✘ 12 g

Question Number : 80 Question Id : 230 Question Type : MCQ Option Shuffling : No
Correct : 1.0 Wrong : 0.33

Which of the following is a process of galvanization?

Options :

1. ✘ Mixing of a metal with another metal by melting
2. ✔ Coating the surface of a metal with Zinc
3. ✘ Coating the surface of a metal with its oxide
4. ✘ Painting a metal

Question Number : 81 Question Id : 231 Question Type : MCQ Option Shuffling : No

Correct : 1.0 Wrong : 0.33

Which element has the least number of valence electrons?

Options :

- ✘ Chlorine
- ✔ Sodium
- ✘ Fluorine
- ✘ Oxygen

Question Number : 82 Question Id : 232 Question Type : MCQ Option Shuffling : No

Correct : 1.0 Wrong : 0.33

For the reaction, $2\text{Na} + \text{H}_2 \rightarrow 2\text{NaH}$, which of the following statements are correct?

- | | |
|---|------------------------------------|
| i) Na is oxidized | ii) H_2 is oxidized |
| (iii) H_2 acts as an oxidizing agent | (iv) Na acts as an oxidizing agent |

Options :

- ✔ (i & iii)
- ✘ (i & ii)
- ✘ (ii & iii)
- ✘ (ii & iv)

Question Number : 83 Question Id : 233 Question Type : MCQ Option Shuffling : No

Correct : 1.0 Wrong : 0.33

Which of the following compounds would react with sodium hydrogen carbonate to produce carbon dioxide gas?

Options :

- ✘ $\text{CH}_3\text{CH}_2\text{OH}$
- ✘ CH_3CH_3
- ✘ $\text{CH}_2=\text{CH}_2$
- ✔ CH_3COOH

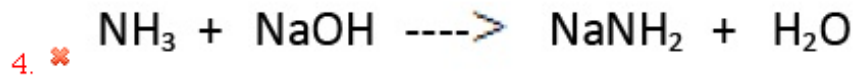
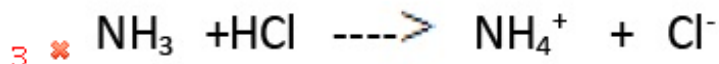
Question Number : 84 Question Id : 234 Question Type : MCQ Option Shuffling : No

Correct : 1.0 Wrong : 0.33

In which of the following reactions does NH_3 act both as an acid and a base?

Options :

- ✘ $\text{NH}_3 + \text{H}_2\text{O} \rightarrow \text{NH}_4^+ + \text{OH}^-$
- ✔ $2\text{NH}_3 \rightarrow \text{NH}_2^- + \text{NH}_4^+$



Question Number : 85 Question Id : 235 Question Type : MCQ Option Shuffling : No
Correct : 1.0 Wrong : 0.33

The plant organelles which can trap sunlight are

Options :

1. ✘ Chlorophyll only

2. ✔ Chloroplasts only

3. ✘ Mitochondria only

4. ✘ Mitochondria and Chloroplasts

Question Number : 86 Question Id : 236 Question Type : MCQ Option Shuffling : No
Correct : 1.0 Wrong : 0.33

Which of the following diseases is not spread by mosquitoes?

Options :

1. ✘ Malaria

2. ✘ Dengue

3. ✘ Filaria

4. ✔ Tuberculosis

Question Number : 87 Question Id : 237 Question Type : MCQ Option Shuffling : No
Correct : 1.0 Wrong : 0.33

The flowering plants belong to the group

Options :

1. ✔ Angiosperms

2. ✘ Gymnosperms

3. ✘ Bryophytes

4. ✘ Pteridophytes

Question Number : 88 Question Id : 238 Question Type : MCQ Option Shuffling : No
Correct : 1.0 Wrong : 0.33

Fish has a streamlined body to

Options :

1. ✘ balance the body while swimming
2. ✔ counter the resistance of water
3. ✘ gain speed as they move forward
4. ✘ avoid collision with other fish

Question Number : 89 Question Id : 239 Question Type : MCQ Option Shuffling : No
Correct : 1.0 Wrong : 0.33

Landslides and soil erosion are occurring more frequently than before because

Options :

1. ✘ Climate has changed
2. ✔ Forests have been cut
3. ✘ Rainfall has become scarce
4. ✘ Drought has dried the soil

Question Number : 90 Question Id : 240 Question Type : MCQ Option Shuffling : No
Correct : 1.0 Wrong : 0.33

Air enters the lungs due to movement of

Options :

1. ✘ Rib muscles only
2. ✘ Diaphragm only
3. ✘ Trachea and bronchi
4. ✔ Rib muscles and diaphragm

Question Number : 91 Question Id : 241 Question Type : MCQ Option Shuffling : No
Correct : 1.0 Wrong : 0.33

The HCF of two numbers is 12 and their LCM is 72. If one number is 36, the other number is

Options :

1. ✘ 12
2. ✔ 24
3. ✘ 36
4. ✘ 48

Question Number : 92 Question Id : 242 Question Type : MCQ Option Shuffling : No
Correct : 1.0 Wrong : 0.33

The largest number which divides 81 and 108, leaving remainders 6 and 3 respectively is

Options :

1. ✘ 9
2. ✔ 15
3. ✘ 18
4. ✘ 515

Question Number : 93 Question Id : 243 Question Type : MCQ Option Shuffling : No

Correct : 1.0 Wrong : 0.33

If $a : b = 4 : 5$ and $b : c = 2 : 3$, then $c : a$ is

Options :

1. ✔ 15 : 8
2. ✘ 3 : 4
3. ✘ 8 : 15
4. ✘ 3 : 5

Question Number : 94 Question Id : 244 Question Type : MCQ Option Shuffling : No

Correct : 1.0 Wrong : 0.33

If 3, 5, x , 25 are in proportion, then x is equal to

Options :

1. ✘ 5
2. ✘ 10
3. ✔ 15
4. ✘ 75

Question Number : 95 Question Id : 245 Question Type : MCQ Option Shuffling : No

Correct : 1.0 Wrong : 0.33

Successive discounts of 30% and 10% are equivalent to a single discount of

Options :

1. ✘ 20%
2. ✘ 35%
3. ✘ 36%
4. ✔ 37%

Question Number : 96 Question Id : 246 Question Type : MCQ Option Shuffling : No

Correct : 1.0 Wrong : 0.33

The simple interest on rupees 200 for 3 years at 6% per annum in rupees is

Options :

1. ✓ 36
2. ✗ 18
3. ✗ 24
4. ✗ 48

Question Number : 97 Question Id : 247 Question Type : MCQ Option Shuffling : No

Correct : 1.0 Wrong : 0.33

A sum of money doubles itself in 4 years when the interest is compounded annually. The number of years when it will become eight times is

Options :

1. ✗ 32
2. ✗ 16
3. ✓ 12
4. ✗ 8

Question Number : 98 Question Id : 248 Question Type : MCQ Option Shuffling : No

Correct : 1.0 Wrong : 0.33

If C.P. of 12 articles is equal to S.P. of 10 articles, then in the whole transaction there is a profit of

Options :

1. ✗ $\frac{50}{3}\%$
2. ✗ $\frac{25}{3}\%$
3. ✗ 25%
4. ✓ 20%

Question Number : 99 Question Id : 249 Question Type : MCQ Option Shuffling : No

Correct : 1.0 Wrong : 0.33

To gain 25% after allowing a discount of 20%, the shopkeeper should mark the price of the article which cost him ₹ 400 as

Options :

1. ✗ ₹ 525
2. ✗ ₹ 580

3. ✓ ₹ 625

4. ✗ ₹ 650

Question Number : 100 Question Id : 250 Question Type : MCQ Option Shuffling : No

Correct : 1.0 Wrong : 0.33

A shopkeeper mixes 40 kg of sugar which costs him ₹ 36 per kg with 27 kg of sugar which costs him ₹ 30 per kg. He sells the mixture at ₹ 35 per kg. His gain percent is

Options :

1. ✓ $\frac{38}{9}\%$

2. ✗ $\frac{400}{49}\%$

3. ✗ $\frac{100}{9}\%$

4. ✗ 10%

Question Number : 101 Question Id : 251 Question Type : MCQ Option Shuffling : No

Correct : 1.0 Wrong : 0.33

In two vessels A and B, the milk and water are in the ratio of 5 : 2 and 4 : 5 respectively. The ratio in which these are mixed to obtain new mixture which contains milk and water in the ratio 3 : 2 is

Options :

1. ✗ 7 : 6

2. ✓ 49 : 36

3. ✗ 15 : 8

4. ✗ 36 : 49

Question Number : 102 Question Id : 252 Question Type : MCQ Option Shuffling : No

Correct : 1.0 Wrong : 0.33

Speed of a boat in still water is 3 km/hr. the speed of the stream is 1 km/hr. The time taken to go 4 km upstream in minutes is

Options :

1. ✗ 48

2. ✗ 60

3. ✗ 96

4. ✓ 120

Question Number : 103 Question Id : 253 Question Type : MCQ Option Shuffling : No

Correct : 1.0 Wrong : 0.33

A train 100 m long is moving at 40 km/h. The time in seconds, it will take to pass another train 150 m long which is moving at 50 km/h in the opposite direction from the moment they meet is

Options :

1. ✗ 6

2. ✗ 8

3. ✓ 10

4. ✗ 15

Question Number : 104 Question Id : 254 Question Type : MCQ Option Shuffling : No

Correct : 1.0 Wrong : 0.33

A and B can do a piece of work in 24 days. If efficiency of A is double than B, then in how many days, A alone can do the same work?

Options :

1. ✗ 30

2. ✓ 36

3. ✗ 60

4. ✗ 72

Question Number : 105 Question Id : 255 Question Type : MCQ Option Shuffling : No

Correct : 1.0 Wrong : 0.33

P and Q can do a piece of work in 12 days, Q and R in 15 days and R and P in 20 days. In how many days Q alone can do the same work?

Options :

1. ✓ 20

2. ✗ 30

3. ✗ 47

4. ✗ 60

Question Number : 106 Question Id : 256 Question Type : MCQ Option Shuffling : No

Correct : 1.0 Wrong : 0.33

The average of first five prime numbers is

Options :

1. ✘ 3.6
2. ✘ 4.5
3. ✘ 5.5
4. ✔ 5.6

Question Number : 107 Question Id : 257 Question Type : MCQ Option Shuffling : No

Correct : 1.0 Wrong : 0.33

The average weight of 100 students is 46 kg. The average weight of boys is 50 kg. If the number of boys is 60, the average weight of girls in kilograms is

Options :

1. ✘ 35
2. ✔ 40
3. ✘ 45
4. ✘ 50

Question Number : 108 Question Id : 258 Question Type : MCQ Option Shuffling : No

Correct : 1.0 Wrong : 0.33

Which term of AP; 7, 14, 21, 28,... is 77 ?

Options :

1. ✘ 9th
2. ✘ 10th
3. ✔ 11th
4. ✘ 12th

Question Number : 109 Question Id : 259 Question Type : MCQ Option Shuffling : No

Correct : 1.0 Wrong : 0.33

The third term of a G.P. is -3 . The product of its first five terms is

Options :

1. ✘ 3^4
2. ✘ -3^4
3. ✘ 3^5
4. ✔ -3^5

Question Number : 110 Question Id : 260 Question Type : MCQ Option Shuffling : No

Correct : 1.0 Wrong : 0.33

A ladder 15 m long just reaches the top of a vertical wall. If the ladder makes an angle of 60° with the wall, the height of the wall is

Options :

1. ✓ 7.5 m
2. ✗ $5\sqrt{3}$ m
3. ✗ $\frac{15\sqrt{3}}{2}$ m
4. ✗ $10\sqrt{3}$ m

Question Number : 111 Question Id : 261 Question Type : MCQ Option Shuffling : No

Correct : 1.0 Wrong : 0.33

From a point on the bridge across a river the angles of depression of the banks on the opposite side of the river are 30° and 45° respectively. If the bridge is at a height of 3m from the bank, the width of the river is

Options :

1. ✗ $2(\sqrt{3} + 1)$ m
2. ✓ $3(\sqrt{3} + 1)$ m
3. ✗ $4(\sqrt{3} + 1)$ m
4. ✗ $2(2\sqrt{3} + 1)$ m

Question Number : 112 Question Id : 262 Question Type : MCQ Option Shuffling : No

Correct : 1.0 Wrong : 0.33

If $(x - 2)$ is a factor of $ax^3 + 3x^2 + 4x + 4$, then a is equal to

Options :

1. ✗ 3
2. ✗ 4
3. ✓ -3
4. ✗ -4

Question Number : 113 Question Id : 263 Question Type : MCQ Option Shuffling : No

Correct : 1.0 Wrong : 0.33

One of the factors of $(36x^2 - 1) + (1 + 6x)^2$ is

Options :

1. ✗ $6 + x$

2. ✘ $6 - x$

3. ✘ $6x - 1$

4. ✔ $12x$

Question Number : 114 Question Id : 264 Question Type : MCQ Option Shuffling : No

Correct : 1.0 Wrong : 0.33

All values of k for which $x^2 + kx + 16 = 0$ has real roots is

Options :

1. ✔ $8 \leq k \leq -8$

2. ✘ $-8 \leq k \leq 8$

3. ✘ $k \geq 8$

4. ✘ $k \geq -8$

Question Number : 115 Question Id : 265 Question Type : MCQ Option Shuffling : No

Correct : 1.0 Wrong : 0.33

The sum and product of the roots of the equation $x^2 - 4x + 5 = 0$ are respectively

Options :

1. ✘ $5, -4$

2. ✘ $4, -5$

3. ✘ $-4, -5$

4. ✔ $4, 5$

Question Number : 116 Question Id : 266 Question Type : MCQ Option Shuffling : No

Correct : 1.0 Wrong : 0.33

Who discovered the sea route to India?

Options :

1. ✔ Vasco da Gama

2. ✘ Magellan

3. ✘ Diaz

4. ✘ Christopher Columbus

Question Number : 117 Question Id : 267 Question Type : MCQ Option Shuffling : No

Correct : 1.0 Wrong : 0.33

In the medieval times, Bedouins were

Options :

1. ✘ Early Romans
2. ✘ Greek Emperors
3. ✔ Wandering Arab camel herdsman
4. ✘ Tribal horse riders

Question Number : 118 Question Id : 268 Question Type : MCQ Option Shuffling : No

Correct : 1.0 Wrong : 0.33

The major cause of top soil being lost due to soil erosion is

Options :

1. ✘ Westerly winds
2. ✘ Thermal inversion
3. ✔ Deforestation
4. ✘ Cattle grazing

Question Number : 119 Question Id : 269 Question Type : MCQ Option Shuffling : No

Correct : 1.0 Wrong : 0.33

The term used for armed rebellion against a constituted authority is

Options :

1. ✔ Insurgency
2. ✘ Terrorism
3. ✘ Naxalism
4. ✘ Coup

Question Number : 120 Question Id : 270 Question Type : MCQ Option Shuffling : No

Correct : 1.0 Wrong : 0.33

The treaty of Versailles was signed in the summer of 1919 with

Options :

1. ✔ Germany
2. ✘ Austria
3. ✘ Turkey
4. ✘ Hungary

Question Number : 121 Question Id : 271 Question Type : MCQ Option Shuffling : No

Correct : 1.0 Wrong : 0.33

About 30% of the 'Great wall of China' has recently been found to have disappeared due to

Options :

1. ✘ Just Natural causes
2. ✘ Global Warming
3. ✘ Natural disasters
4. ✔ Natural causes and theft of bricks for building houses

Question Number : 122 Question Id : 272 Question Type : MCQ Option Shuffling : No

Correct : 1.0 Wrong : 0.33

Is Virus a living being?

Options :

1. ✘ Yes, because it has DNA
2. ✔ No, because it does not possess the machinery to duplicate itself
3. ✘ Yes, because it can divide to reproduce when inside a living being
4. ✘ No, because its coat is made of Protein

Question Number : 123 Question Id : 273 Question Type : MCQ Option Shuffling : No

Correct : 1.0 Wrong : 0.33

What does a plant do with the sugar it makes?

Options :

1. ✘ Uses it up completely to get energy for its survival
2. ✘ Stores it in its roots
3. ✔ Converts it into starch
4. ✘ Stores it for herbivores to feed upon

Question Number : 124 Question Id : 274 Question Type : MCQ Option Shuffling : No

Correct : 1.0 Wrong : 0.33

Which out of the following is in all cases a hereditary disorder

Options :

1. ✔ Thalassemia
2. ✘ Diabetes mellitus
3. ✘ Tuberculosis
4. ✘ Anaemia

Question Number : 125 Question Id : 275 Question Type : MCQ Option Shuffling : No

Correct : 1.0 Wrong : 0.33

The latest Nobel Peace Prize was awarded to two people, a man and a woman. To which countries do they belong?

Options :

1. ✘ China
2. ✔ India and Pakistan
3. ✘ US and Greece
4. ✘ India and Indonesia

Question Number : 126 Question Id : 276 Question Type : MCQ Option Shuffling : No

Correct : 1.0 Wrong : 0.33

Who is Dalai Lama and where does he live?

Options :

1. ✔ Tibetan Spiritual leader living in Dharamshala, Himachal Pradesh
2. ✘ Buddhist monk living in Tibet
3. ✘ Tibetan rebel fighting the Chinese
4. ✘ Religious leader from Tibet living in Kushalnagar, Coorg

Question Number : 127 Question Id : 277 Question Type : MCQ Option Shuffling : No

Correct : 1.0 Wrong : 0.33

In the geography class students were confused regarding the difference between climate and weather. Four of the students gave four answers. Which one is the correct difference?

Options :

1. ✘ Climate is the sum total of variation in weather in an area whereas weather is the state of atmosphere over an area.
2. ✘ Climate and weather are synonymous
3. ✔ Climate is the sum total of weather conditions over a large area for a long period of time and weather is the state of atmosphere over an area at any point of time.
4. ✘ Climate is the duration of seasons in a large area and weather refers to seasonal changes in a small area.

Question Number : 128 Question Id : 278 Question Type : MCQ Option Shuffling : No

Correct : 1.0 Wrong : 0.33

The tournament that takes place in Roland Garros in Paris is associated with _____ .

Options :

1. ✓ Lawn tennis
2. ✗ Table tennis
3. ✗ Basket ball
4. ✗ Bowling

Question Number : 129 Question Id : 279 Question Type : MCQ Option Shuffling : No

Correct : 1.0 Wrong : 0.33

Which is the national sport of India?

Options :

1. ✗ Cricket
2. ✗ Football
3. ✓ Hockey
4. ✗ Kabaddi

Question Number : 130 Question Id : 280 Question Type : MCQ Option Shuffling : No

Correct : 1.0 Wrong : 0.33

Where would you place vinegar if you were to show its pH on a scale showing pH from 1 to 8 to?

Options :

1. ✓ Left of 7
2. ✗ Right of 7
3. ✗ On 7
4. ✗ On 8

Question Number : 131 Question Id : 281 Question Type : MCQ Option Shuffling : No

Correct : 1.0 Wrong : 0.33

A gel is a

Options :

1. ✓ Suspension of a solid in a liquid
2. ✗ Suspension of tiny liquid droplets in another liquid
3. ✗ Gas trapped in a viscous liquid
4. ✗ Gas trapped in a semi-solid

Question Number : 132 Question Id : 282 Question Type : MCQ Option Shuffling : No

Correct : 1.0 Wrong : 0.33

Which out of the following is incorrect regarding Lok Sabha?

Options :

1. ✘ 530 members are elected from states
2. ✘ 20 members are elected from Union Territories
3. ✔
2 members from Anglo Indian community are elected by the community
4. ✘
2 members of Anglo Indian community are nominated by the President if there is no member from the Anglo Indian community

Question Number : 133 Question Id : 283 Question Type : MCQ Option Shuffling : No

Correct : 1.0 Wrong : 0.33

Some salts we use in the kitchen for cooking are given below but one is erroneously mentioned. Identify it

Options :

1. ✘ Sodium chloride
2. ✘ Sodium bi carbonate
3. ✔
Calcium Phosphate
4. ✘
Monosodium glutamate

Question Number : 134 Question Id : 284 Question Type : MCQ Option Shuffling : No

Correct : 1.0 Wrong : 0.33

When mother was heating the oven to a certain temperature for baking a cake, the daughter wanted to know the difference between heat and temperature. In mother's response which one statement was incorrect?

Options :

1. ✘
Heat is a form of energy and temperature measures how hot something is
2. ✘
Heat is measured in Joules and temperature in degree Celsius ($^{\circ}\text{C}$)
3. ✔
Heat and temperature both flow between temperatures
4. ✘
When heat energy flows, temperature increases or decreases

Question Number : 135 Question Id : 285 Question Type : MCQ Option Shuffling : No

Correct : 1.0 Wrong : 0.33

Read the poem written by a child.

Plants will always grow
Wind will always blow
Solar cells will give electrical energy
Waves forever will make energy

About what did a child write in the above poem?

Options :

1. ✓ Renewable energy resources
2. ✗ Non renewable energy resources
3. ✗ Energy resources of all kinds
4. ✗ Principle of conservation of energy

Question Number : 136 Question Id : 286 Question Type : MCQ Option Shuffling : No

Correct : 1.0 Wrong : 0.33

The colour of an object is the colour it reflects. So a red boot _____
Identify the wrong statement among the ones written below.

Options :

1. ✗ looks red in white light as it reflects red and absorbs all other colours
2. ✗ red in red light as it reflects red light falling on it
3. ✗ looks black in green light which it absorbs
4. ✓ red in green light when there is no red light

Question Number : 137 Question Id : 287 Question Type : MCQ Option Shuffling : No

Correct : 1.0 Wrong : 0.33

Which of the following statements regarding international trade is true?

Options :

1. ✓ Higher exchange rate makes country's exports cheaper
2. ✗ Higher exchange rate makes country's imports cheaper
3. ✗ Lower exchange rate makes country's imports cheaper in domestic markets
4. ✗ Lower exchange rate makes country's exports cheaper

Question Number : 138 Question Id : 288 Question Type : MCQ Option Shuffling : No

Correct : 1.0 Wrong : 0.33

The main cause of balance of payments (BoP) deficit in developed free market economies is

Options :

1. ✓ Less demand for country's exports
2. ✗ Less demand for country's imports
3. ✗ Rising demand for country's exports
4. ✗ Recurring Political instability in the country

Question Number : 139 Question Id : 289 Question Type : MCQ Option Shuffling : No

Correct : 1.0 Wrong : 0.33

Which democratic country has an unwritten constitution?

Options :

1. ✗ United States
2. ✓ England
3. ✗ India
4. ✗ Canada and America

Question Number : 140 Question Id : 290 Question Type : MCQ Option Shuffling : No

Correct : 1.0 Wrong : 0.33

If the Gross Domestic Product (GDP) of a country is higher than Gross National Product (GNP), then

Options :

1. ✗ The total production by national and foreign individuals within the geographical boundaries of a country is lower than produced by its citizens on its land or foreign soil
2. ✓ Net payment outflow to foreign assets is greater than net income inflow from assets abroad
3. ✗ The strength of the country's basal economy is less than economic strength of the nationals of the country
4. ✗ Net payments outflow is lower than incoming inflow

Question Number : 141 Question Id : 291 Question Type : MCQ Option Shuffling : No

Correct : 1.0 Wrong : 0.33

Sabnam introduced Vipul as the son of the only daughter of the father of her uncle.
Vipul is Sabnam's

Options :

1. ✘ son
2. ✘ uncle
3. ✔ brother
4. ✘ nephew

Question Number : 142 Question Id : 292 Question Type : MCQ Option Shuffling : No
Correct : 1.0 Wrong : 0.33

The first two numbers on the left of the sign '::' are related in a certain way. The same relationship holds for the second pair of numbers on the right side of the sign '::' of which one is missing. Find the missing one from the alternatives.

6 : 42 :: 9 : ?

Options :

1. ✔ 90
2. ✘ 87
3. ✘ 73
4. ✘ 65

Question Number : 143 Question Id : 293 Question Type : MCQ Option Shuffling : No
Correct : 1.0 Wrong : 0.33

The two words on the left side of the sign '::' are related in a certain way. The same relationship holds for the second pair of words on the right side of the sign '::' of which one is missing. Find the missing one from the alternatives.

Water : Filter :: Movie : ?

Options :

1. ✘ Actor
2. ✘ Theater
3. ✘ Director
4. ✔ Censor

Question Number : 144 Question Id : 294 Question Type : MCQ Option Shuffling : No
Correct : 1.0 Wrong : 0.33

Seven cars P, Q, R, S, T, U and V are kept in an exhibition. Q is to the immediate right of U. U is fourth to the right of V. P is between R and S. V which is third to the left of S is at one of the ends.

Which is correct position of the car T?

Options :

1. ✘ it is in the middle
2. ✘ it is fourth to the left of S
3. ✔ it is at one of the ends
4. ✘ it is next to V

Question Number : 145 Question Id : 295 Question Type : MCQ Option Shuffling : No

Correct : 1.0 Wrong : 0.33

Arrange the following words in a meaningful logical sequence and choose the appropriate number sequence from the alternatives.

1. District 2. Nation 3. Married couple 4. State 5. Village 6. Family

Options :

1. ✘ 6, 3, 5, 1, 4, 2
2. ✔ 3, 6, 5, 1, 4, 2
3. ✘ 3, 6, 5, 1, 2, 4
4. ✘ 6, 3, 5, 4, 1, 2

Question Number : 146 Question Id : 296 Question Type : MCQ Option Shuffling : No

Correct : 1.0 Wrong : 0.33

The numbers in each group are related in a certain way. Choose the correct number from among the alternatives that will replace the question mark.

(13 [22] 31) (15 [33] 51) (17 [?] 69)

Options :

1. ✘ 55
2. ✘ 38
3. ✘ 44
4. ✔ 43

Question Number : 147 Question Id : 297 Question Type : MCQ Option Shuffling : No

Correct : 1.0 Wrong : 0.33

In a certain language, '273' means 'leaves are green'; '5426' means 'green is a color'; and '9524' means 'color is bright green'. Which digit means 'bright' in that language?

Options :

1. ✘ 4

2. ✘ 2

3. ✔ 9

4. ✘ 5

Question Number : 148 Question Id : 298 Question Type : MCQ Option Shuffling : No

Correct : 1.0 Wrong : 0.33

If 'BACKWARD' is coded as 'DBARACKW', then 'HANDLING' would be coded as:

Options :

1. ✔ GHANINDL

2. ✘ GHANNILD

3. ✘ GHANINLD

4. ✘ GHNANILD

Question Number : 149 Question Id : 299 Question Type : MCQ Option Shuffling : No

Correct : 1.0 Wrong : 0.33

Starting from his house, Mohan walks 10 km to the South; turns left and walks 12 km. He turns right and walks 5 km. Finally he turns right and walks 20 km. How far is he from the starting point?

Options :

1. ✘ 15 km

2. ✔ 17 km

3. ✘ 23 km

4. ✘ 27 km

Question Number : 150 Question Id : 300 Question Type : MCQ Option Shuffling : No

Correct : 1.0 Wrong : 0.33

The numbers in the matrix given below follow a certain trend row-wise and and/or column wise. Study the trend and choose the number which will replace the question mark?

5	4	7
14	25	9
12	?	5

Options :

1. ✔ 49

2. ✖ 35

3. ✖ 22

4. ✖ 16

Railway Recruitment Board

Notations :

- Options shown in green color and with ✓ icon are correct.
- Options shown in red color and with ✗ icon are incorrect.

Question Paper Name:	Junior Engineer 26th Aug Shift 3 Actual
Subject Name:	Junior Engineer
Creation Date:	2015-08-18 12:48:18.0
Cut Off:	0
Duration:	120
Number of Questions:	150
Total Marks:	150.0

Junior Engineer

Group Number :	1
Group Id :	3
Group Maximum Duration :	0
Group Minimum Duration :	120
Revisit allowed for view? :	No
Revisit allowed for edit? :	No
Break time:	0
Group Marks:	150.0

Junior Engineer

Section Id :	3
Section Number :	1
Section type :	Online
Mandatory or Optional:	Mandatory
Number of Questions:	150
Number of Questions to be attempted:	150
Section Marks:	150.0

Sub-Section Number:	1
Sub-Section Id:	3
Question Shuffling Allowed :	Yes

**Question Number : 1 Question Id : 301 Question Type : MCQ Option Shuffling : No
Correct : 1.0 Wrong : 0.33**

Zerorth law of thermodynamics forms the basis of measurement of

Options :

- ✗ Pressure
- ✓ Temperature

3. ✘ Heat exchange

4. ✘ Work

Question Number : 2 Question Id : 302 Question Type : MCQ Option Shuffling : No

Correct : 1.0 Wrong : 0.33

Internal energy is defined by

Options :

1. ✘ Zeroth law of thermodynamics

2. ✔ First law of thermodynamics

3. ✘ Second law of thermodynamics

4. ✘ Law of entropy

Question Number : 3 Question Id : 303 Question Type : MCQ Option Shuffling : No

Correct : 1.0 Wrong : 0.33

The concept of overall heat transfer is used in the heat transfer in the case of

Options :

1. ✘ Conduction

2. ✘ Convection

3. ✘ Radiation

4. ✔ Combined mode of heat transfer of conduction and convection

Question Number : 4 Question Id : 304 Question Type : MCQ Option Shuffling : No

Correct : 1.0 Wrong : 0.33

The unit of thermal conductivity in S.I. unit is

Options :

1. ✔ W/mK

2. ✘ W²/mK

3. ✘ W/m²K

4. ✘ W/m

Question Number : 5 Question Id : 305 Question Type : MCQ Option Shuffling : No

Correct : 1.0 Wrong : 0.33

All radiations in a black body are

Options :

1. ✘ Reflected

2. ✘ Refracted

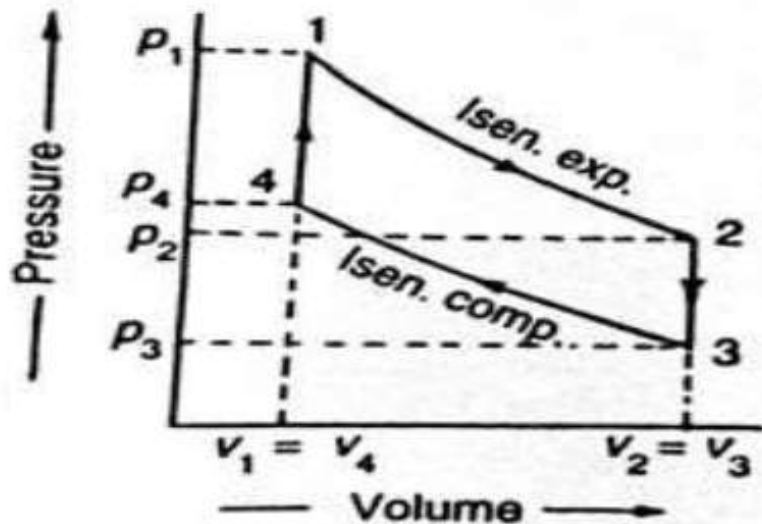
3. ✘ Transmitted

4. ✔ Absorbed

Question Number : 6 Question Id : 306 Question Type : MCQ Option Shuffling : No

Correct : 1.0 Wrong : 0.33

The given P-V diagram indicates following cycle



Options :

1. ✘ Carnot cycle
2. ✔ Otto cycle
3. ✘ Diesel cycle
4. ✘ Dual cycle

Question Number : 7 Question Id : 307 Question Type : MCQ Option Shuffling : No

Correct : 1.0 Wrong : 0.33

If the cut-off ratio is decreased, the efficiency of diesel cycle

Options :

1. ✔ Increases
2. ✘ Decreases
3. ✘ Remains constant
4. ✘ May increase or decrease

Question Number : 8 Question Id : 308 Question Type : MCQ Option Shuffling : No

Correct : 1.0 Wrong : 0.33

Size of shaper is specified by

Options :

1. ✘ Size of table
2. ✔ Length of stroke
3. ✘ Power of motor
4. ✘ Ratio of forward to return stroke

Question Number : 9 Question Id : 309 Question Type : MCQ Option Shuffling : No

Correct : 1.0 Wrong : 0.33

Which of the following is an example of orthogonal cutting?

Options :

1. ✘ Shaping
2. ✔ Turning
3. ✘ Drilling
4. ✘ Milling

Question Number : 10 Question Id : 310 Question Type : MCQ Option Shuffling : No

Correct : 1.0 Wrong : 0.33

Grey cast iron is usually welded by

Options :

1. ✔ Gas welding
2. ✘ Resistance welding
3. ✘ Arc welding
4. ✘ Thermit welding

Question Number : 11 Question Id : 311 Question Type : MCQ Option Shuffling : No

Correct : 1.0 Wrong : 0.33

A grinding wheel of 150 mm diameter is rotating at 3000 rpm. The grinding speed is

Options :

1. ✔ 7.5π m/sec
2. ✘ 15π m/sec
3. ✘ 45π m/sec
4. ✘ 450π m/sec

Question Number : 12 Question Id : 312 Question Type : MCQ Option Shuffling : No

Correct : 1.0 Wrong : 0.33

In Die casting, machining allowance is

Options :

1. ✘ Small
2. ✘ Large
3. ✘ Very large
4. ✔ Not provided

Question Number : 13 Question Id : 313 Question Type : MCQ Option Shuffling : No

Correct : 1.0 Wrong : 0.33

The grinding operation is a

Options :

1. ✘ Shaping operation
2. ✘ Forming operation
3. ✔ Surface finishing operation
4. ✘ Dressing operation

Question Number : 14 Question Id : 314 Question Type : MCQ Option Shuffling : No

Correct : 1.0 Wrong : 0.33

The process in which leaving a tab without removing any material is

Options :

1. ✘ Notching
2. ✔ Lancing
3. ✘ Parting
4. ✘ Slitting

Question Number : 15 Question Id : 315 Question Type : MCQ Option Shuffling : No

Correct : 1.0 Wrong : 0.33

Steel rails are welded by

Options :

1. ✘ Gas welding
2. ✔ Thermit welding
3. ✘ Resistance welding
4. ✘ Argon arc welding

Question Number : 16 Question Id : 316 Question Type : MCQ Option Shuffling : No

Correct : 1.0 Wrong : 0.33

D.C. generator works on the principle of

Options :

1. ✔ Electromagnetic Induction
2. ✘ Ohm's Law
3. ✘ Lenz's Law
4. ✘ Kirchoff's Law

Question Number : 17 Question Id : 317 Question Type : MCQ Option Shuffling : No

Correct : 1.0 Wrong : 0.33

Thermal relays are used in

Options :

1. motor starters
2. switchgear protection
3. transformer protection
4. generators

Question Number : 18 Question Id : 318 Question Type : MCQ Option Shuffling : No
Correct : 1.0 Wrong : 0.33

The most commonly used moderator in a Nuclear reactor is

Options :

1. graphite
2. oil
3. oxygen
4. heavy water

Question Number : 19 Question Id : 319 Question Type : MCQ Option Shuffling : No
Correct : 1.0 Wrong : 0.33

Over speed protection of a generator is done by

Options :

1. Governor
2. Differential protection
3. Over current relay
4. Alarm

Question Number : 20 Question Id : 320 Question Type : MCQ Option Shuffling : No
Correct : 1.0 Wrong : 0.33

The motor which does not have winding on it, is

Options :

1. Repulsion
2. Reluctance
3. Hysteresis
4. Universal

Question Number : 21 Question Id : 321 Question Type : MCQ Option Shuffling : No
Correct : 1.0 Wrong : 0.33

Which of the following is not fitted on transformer?

Options :

1. Commutator
2. Breather
3. Conservator
4. Buchholz Relay

Question Number : 22 Question Id : 322 Question Type : MCQ Option Shuffling : No
Correct : 1.0 Wrong : 0.33

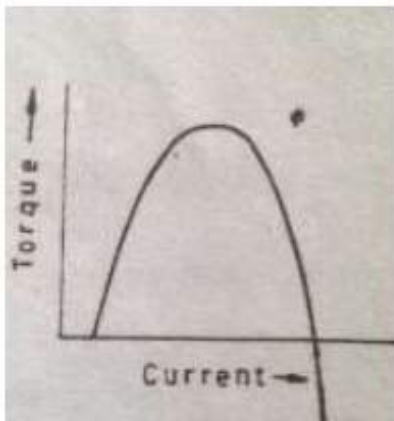
Open circuit test in transformers is conducted to determine

Options :

1. hysteresis losses
2. copper losses
3. core losses
4. eddy current losses

Question Number : 23 Question Id : 323 Question Type : MCQ Option Shuffling : No
Correct : 1.0 Wrong : 0.33

The given figure is the Torque-Current characteristics of



Options :

1. Cumulative Compound motor
2. Shunt motor
3. Series motor
4. Differential Compound motor

Question Number : 24 Question Id : 324 Question Type : MCQ Option Shuffling : No
Correct : 1.0 Wrong : 0.33

Which of the following is not a non-linear element?

Options :

1. ✘ Gas diode
2. ✔ Heater coil
3. ✘ Tunnel diode
4. ✘ Electric arc

Question Number : 25 Question Id : 325 Question Type : MCQ Option Shuffling : No
Correct : 1.0 Wrong : 0.33

Which of the following is known as metal rectifier?

Options :

1. ✘ Selenium disc rectifier
2. ✔ Copper oxide rectifier
3. ✘ Gas tube diode
4. ✘ Varactor diode

Question Number : 26 Question Id : 326 Question Type : MCQ Option Shuffling : No
Correct : 1.0 Wrong : 0.33

For full-wave rectified sine wave, form factor is

Options :

1. ✘ 1.41
2. ✔ 1.11
3. ✘ 1.5
4. ✘ 1.28

Question Number : 27 Question Id : 327 Question Type : MCQ Option Shuffling : No
Correct : 1.0 Wrong : 0.33

Electron pair bonding occurs when atoms

Options :

1. ✘ lack electrons
2. ✘ lack holes
3. ✔ share electrons
4. ✘ share holes

Question Number : 28 Question Id : 328 Question Type : MCQ Option Shuffling : No
Correct : 1.0 Wrong : 0.33

In a p type semiconductor, minority carriers are

Options :

1. ✘ holes
2. ✔ electrons
3. ✘ dopants
4. ✘ atoms

Question Number : 29 Question Id : 329 Question Type : MCQ Option Shuffling : No
Correct : 1.0 Wrong : 0.33

Which of the following is a pentavalent material?

Options :

1. ✘ carbon
2. ✘ boron
3. ✔ phosphorus
4. ✘ silicon

Question Number : 30 Question Id : 330 Question Type : MCQ Option Shuffling : No
Correct : 1.0 Wrong : 0.33

Another name for a unity gain amplifier is

Options :

1. ✘ difference amplifier
2. ✘ comparator
3. ✘ single ended
4. ✔ voltage follower

Question Number : 31 Question Id : 331 Question Type : MCQ Option Shuffling : No
Correct : 1.0 Wrong : 0.33

At room temperature, the current in intrinsic semiconductor is due to

Options :

1. ✘ holes
2. ✘ electrons
3. ✘ ions
4. ✔ holes and electrons both

Question Number : 32 Question Id : 332 Question Type : MCQ Option Shuffling : No
Correct : 1.0 Wrong : 0.33

$AB + AB' =$

Options :

1. ✘ B

2. ✔ A

3. ✘ 1

4. ✘ 0

Question Number : 33 Question Id : 333 Question Type : MCQ Option Shuffling : No

Correct : 1.0 Wrong : 0.33

Which of the following devices has one input and many outputs?

Options :

1. ✘ Multiplexer

2. ✔ Demultiplexer

3. ✘ flip-flop

4. ✘ Counter

Question Number : 34 Question Id : 334 Question Type : MCQ Option Shuffling : No

Correct : 1.0 Wrong : 0.33

The number of bits in ASCII is

Options :

1. ✔ 7

2. ✘ 8

3. ✘ 9

4. ✘ 10

Question Number : 35 Question Id : 335 Question Type : MCQ Option Shuffling : No

Correct : 1.0 Wrong : 0.33

Poise can also be expressed as

Options :

1. ✘ Dyne-cm/s²

2. ✘ Dyne-cm/s

3. ✘ Dyne-s/cm

4. ✔ Dyne-s/cm²

Question Number : 36 Question Id : 336 Question Type : MCQ Option Shuffling : No

Correct : 1.0 Wrong : 0.33

Number of phases in soil mass is

Options :

1. ✓ 3

2. ✗ 2

3. ✗ 1

4. ✗ 4

Question Number : 37 Question Id : 337 Question Type : MCQ Option Shuffling : No
Correct : 1.0 Wrong : 0.33

Bolts are most suitable to carry

Options :

1. ✗ Shear

2. ✗ Bending

3. ✓ Axial tension

4. ✗ Shear and bending

Question Number : 38 Question Id : 338 Question Type : MCQ Option Shuffling : No
Correct : 1.0 Wrong : 0.33

Spherical shape of droplets of mercury is due to

Options :

1. ✗ High density

2. ✓ High surface tension

3. ✗ High adhesion

4. ✗ Water

Question Number : 39 Question Id : 339 Question Type : MCQ Option Shuffling : No
Correct : 1.0 Wrong : 0.33

The method of orienting a plane table with two inaccessible points is known as

Options :

1. ✗ Intersection

2. ✗ Resection

3. ✗ Back sighting

4. ✓ Two-point problem

Question Number : 40 Question Id : 340 Question Type : MCQ Option Shuffling : No
Correct : 1.0 Wrong : 0.33

The most likely time (m) is 'mode' of the

Options :

1. ✗ Normal distribution

2. Beta distribution
3. Binomial distribution
4. Poisson distribution

Question Number : 41 Question Id : 341 Question Type : MCQ Option Shuffling : No
Correct : 1.0 Wrong : 0.33

Which of the following timbers is suitable for making sports goods?

Options :

1. Mulberry
2. Mahogany
3. Sal
4. Deodar

Question Number : 42 Question Id : 342 Question Type : MCQ Option Shuffling : No
Correct : 1.0 Wrong : 0.33

Cement concrete is a

Options :

1. Elastic material
2. Visco-elastic material
3. Non elastic material
4. Plastic material

Question Number : 43 Question Id : 343 Question Type : MCQ Option Shuffling : No
Correct : 1.0 Wrong : 0.33

Which of the following is used to measure the discharge?

Options :

1. Current meter
2. Venturimeter
3. Pitot tube
4. Hotwire anemometer

Question Number : 44 Question Id : 344 Question Type : MCQ Option Shuffling : No
Correct : 1.0 Wrong : 0.33

Direct method of contouring is

Options :

1. A quick method
2. Adopted for large surveys only

3. ✓ Most accurate method
4. ✗ Suitable for hilly terrains

Question Number : 45 Question Id : 345 Question Type : MCQ Option Shuffling : No
Correct : 1.0 Wrong : 0.33

Which of the following soils has more plasticity index?

Options :

1. ✗ Sand
2. ✗ Silt
3. ✓ Clay
4. ✗ Gravel

Question Number : 46 Question Id : 346 Question Type : MCQ Option Shuffling : No
Correct : 1.0 Wrong : 0.33

Seasoning of timber is required to

Options :

1. ✗ Soften the timber
2. ✗ Harden the timber
3. ✗ Straighten the timber
4. ✓ Remove sap from the timber

Question Number : 47 Question Id : 347 Question Type : MCQ Option Shuffling : No
Correct : 1.0 Wrong : 0.33

An instrument transformer is used to extend the range of

Options :

1. ✓ induction instrument
2. ✗ electrostatic instrument
3. ✗ moving coil instrument
4. ✗ PMMC instrument

Question Number : 48 Question Id : 348 Question Type : MCQ Option Shuffling : No
Correct : 1.0 Wrong : 0.33

Wattmeter cannot be designed on the principle of

Options :

1. ✗ electrostatic instrument
2. ✗ thermocouple instrument
3. ✓ moving iron instrument
4. ✗ electrodynamic instrument

Question Number : 49 Question Id : 349 Question Type : MCQ Option Shuffling : No
Correct : 1.0 Wrong : 0.33

In an energy meter, braking torque is produced to

Options :

1. ✘ safe guard it against creep
2. ✘ brake the instrument
3. ✘ bring energy meter to stand still
4. ✔ maintain steady speed and equal to driving torque

Question Number : 50 Question Id : 350 Question Type : MCQ Option Shuffling : No
Correct : 1.0 Wrong : 0.33

Resistances can be measured with the help of

Options :

1. ✘ wattmeters
2. ✘ voltmeters
3. ✘ ammeters
4. ✔ ohmmeters and resistance bridges

Question Number : 51 Question Id : 351 Question Type : MCQ Option Shuffling : No
Correct : 1.0 Wrong : 0.33

Which of the following essential features is possessed by an indicating instrument?

Options :

1. ✘ Deflecting device
2. ✘ Controlling device
3. ✘ Damping device
4. ✔ Deflecting, controlling and damping device

Question Number : 52 Question Id : 352 Question Type : MCQ Option Shuffling : No
Correct : 1.0 Wrong : 0.33

Per capita water demand is

Options :

1. ✘ average amount of daily water required by one person
2. ✘ monthly average amount of daily water required by one person
3. ✔ annual average amount of daily water required by one person
4. ✘ weekly average amount of daily water required by one person

Question Number : 53 Question Id : 353 Question Type : MCQ Option Shuffling : No
Correct : 1.0 Wrong : 0.33

The permissible/desirable drinking water standard for total hardness is

Options :

1. ✘ 200 mg/l
2. ✔ 300 mg/l
3. ✘ 250 mg/l
4. ✘ 500 mg/l

Question Number : 54 Question Id : 354 Question Type : MCQ Option Shuffling : No

Correct : 1.0 Wrong : 0.33

In BOD₅ determination of sewage, the initial dissolved oxygen is measured to be 8.3 mg/l. However, after 5 day incubation at 20 °C temperature, the dissolved oxygen is found to be 2.3 mg/l. If the dilution factor is 1:60, the BOD₅ of the sewage would be

Options :

1. ✘ 360 mg/l
2. ✘ 260 mg/l
3. ✔ cannot be determined
4. ✘ 6.0 mg/l

Question Number : 55 Question Id : 355 Question Type : MCQ Option Shuffling : No

Correct : 1.0 Wrong : 0.33

The continuous exposure of high concentration of carbon monoxide may cause

Options :

1. ✘ damage of alveoli
2. ✘ kidney damage
3. ✘ failure of respiratory system
4. ✔ coma followed by death

Question Number : 56 Question Id : 356 Question Type : MCQ Option Shuffling : No

Correct : 1.0 Wrong : 0.33

The frequency range of audibility of a healthy person with perfect hearing is

Options :

1. ✘ 200 to 10000 Hz
2. ✘ 2000 to 5000 Hz
3. ✔ 20 to 20,000 Hz

4. ✘ 20 to 2000 Hz

Question Number : 57 Question Id : 357 Question Type : MCQ Option Shuffling : No

Correct : 1.0 Wrong : 0.33

The green house gases as per their increasing order of effectiveness are

Options :

1. ✔ CO₂, CH₄, N₂O and CFC
2. ✘ CH₄, CO₂, N₂O and CFC
3. ✘ N₂O, CH₄, CO₂ and CFC
4. ✘ CFC, CH₄, CO₂ and N₂O

Question Number : 58 Question Id : 358 Question Type : MCQ Option Shuffling : No

Correct : 1.0 Wrong : 0.33

Printer is a(an) _____

Options :

1. ✘ Input device
2. ✔ Output device
3. ✘ Storage device
4. ✘ Both input and output device

Question Number : 59 Question Id : 359 Question Type : MCQ Option Shuffling : No

Correct : 1.0 Wrong : 0.33

Which of the following is not true about EPROM?

Options :

1. ✘ Random access memory
2. ✘ Erasable programmable read only memory
3. ✘ Non-volatile memory
4. ✔ Sequential access memory

Question Number : 60 Question Id : 360 Question Type : MCQ Option Shuffling : No

Correct : 1.0 Wrong : 0.33

Which of the following components of CPU temporarily stores data for ALU operations?

Options :

1. ✘ Arithmetic and Logic Unit (ALU)
2. ✘ Control Unit (CU)
3. ✔ Registers

4. ✘ Random Access Memory (RAM)

Question Number : 61 Question Id : 361 Question Type : MCQ Option Shuffling : No

Correct : 1.0 Wrong : 0.33

BCD coding scheme uses _____ bits to code decimal digits.

Options :

1. ✔ 4
2. ✘ 8
3. ✘ 16
4. ✘ 32

Question Number : 62 Question Id : 362 Question Type : MCQ Option Shuffling : No

Correct : 1.0 Wrong : 0.33

The binary representation of 195.5 is _____

Options :

1. ✘ $(11000001.01)_2$
2. ✘ $(11000001.11)_2$
3. ✘ $(11000011.01)_2$
4. ✔ $(11000011.10)_2$

Question Number : 63 Question Id : 363 Question Type : MCQ Option Shuffling : No

Correct : 1.0 Wrong : 0.33

Considering X as a binary variable, the Boolean expression $X.1$ is equivalent to

Options :

1. ✔ X
2. ✘ 1
3. ✘ 0
4. ✘ X'

Question Number : 64 Question Id : 364 Question Type : MCQ Option Shuffling : No

Correct : 1.0 Wrong : 0.33

The 2's complement of the binary number $(00000000)_2$ is

Options :

1. ✘ $(11111111)_2$
2. ✔ $(00000000)_2$
3. ✘ $(10101010)_2$
4. ✘ $(01010101)_2$

Question Number : 65 Question Id : 365 Question Type : MCQ Option Shuffling : No

Correct : 1.0 Wrong : 0.33

A proprietary technology developed by Microsoft that allows embedding and linking to documents and other objects is

Options :

1. ✘ DOM
2. ✘ MODEM
3. ✔ OLE
4. ✘ OpenDoc

Question Number : 66 Question Id : 366 Question Type : MCQ Option Shuffling : No

Correct : 1.0 Wrong : 0.33

Class 'B' IP addresses use _____ bits for Network ID.

Options :

1. ✘ 8
2. ✔ 16
3. ✘ 24
4. ✘ 32

Question Number : 67 Question Id : 367 Question Type : MCQ Option Shuffling : No

Correct : 1.0 Wrong : 0.33

Which of the following is not a Web browser?

Options :

1. ✘ Netscape Navigator
2. ✘ NetSurf
3. ✔ XML
4. ✘ Opera

Question Number : 68 Question Id : 368 Question Type : MCQ Option Shuffling : No

Correct : 1.0 Wrong : 0.33

The diagonal scale is used to represent

Options :

1. ✔ three consecutive units
2. ✘ two consecutive units
3. ✘ diagonal of square
4. ✘ diagonal of rectangle

Question Number : 69 Question Id : 369 Question Type : MCQ Option Shuffling : No

Correct : 1.0 Wrong : 0.33

If a line is parallel to H.P. and inclined to V.P., its true length will be seen in

Options :

1. ✘ Front view
2. ✔ Top view
3. ✘ Side view
4. ✘ Both front and top views

Question Number : 70 Question Id : 370 Question Type : MCQ Option Shuffling : No

Correct : 1.0 Wrong : 0.33

If both the front and top views of a plane are straight lines, it may be

Options :

1. ✔ perpendicular to both horizontal and vertical planes
2. ✘ parallel to horizontal plane and perpendicular to vertical plane
3. ✘ perpendicular to horizontal plane and parallel to vertical plane
4. ✘ parallel to both horizontal and vertical planes

Question Number : 71 Question Id : 371 Question Type : MCQ Option Shuffling : No

Correct : 1.0 Wrong : 0.33

For orthographic projections, BIS recommends the following projections.

Options :

1. ✘ Fourth-angle projection
2. ✘ Third-angle projection
3. ✔ First-angle projection
4. ✘ Second-angle projection

Question Number : 72 Question Id : 372 Question Type : MCQ Option Shuffling : No

Correct : 1.0 Wrong : 0.33

A square lamina is perpendicular to the H.P. and inclined to V.P. Its

Options :

1. ✔ V.T. will be perpendicular to the reference line
2. ✘ H.T. will be parallel to the reference line
3. ✘ V.T. will be parallel to the reference line
4. ✘ V.T. will be inclined to the reference line

Question Number : 73 Question Id : 373 Question Type : MCQ Option Shuffling : No

Correct : 1.0 Wrong : 0.33

A truck of mass 1000 kg moving at a speed of 20 m/s is braked suddenly with a braking force of 5000 N. The distance travelled by the truck before stopping is

Options :

1. ✘ 20 m
2. ✘ 30 m
3. ✔ 40 m
4. ✘ 80 m

Question Number : 74 Question Id : 374 Question Type : MCQ Option Shuffling : No

Correct : 1.0 Wrong : 0.33

A cubical box (each side 10 cm) of weight 19.6 N is placed on a table. The pressure exerted by the box on the table is

Options :

1. ✘ 19.6 N/m^2
2. ✔ $1.96 \times 10^3 \text{ N/m}^2$
3. ✘ 1.96 N/m^2
4. ✘ $0.98 \times 10^3 \text{ N/m}^2$

Question Number : 75 Question Id : 375 Question Type : MCQ Option Shuffling : No

Correct : 1.0 Wrong : 0.33

Rohan does 150 J of work in 5 s. The power delivered by him is

Options :

1. ✔ 30 W
2. ✘ 15 W
3. ✘ 150 W
4. ✘ 750 W

Question Number : 76 Question Id : 376 Question Type : MCQ Option Shuffling : No

Correct : 1.0 Wrong : 0.33

For a sound wave, the amplitude is

Options :

1. ✘ the distance between two consecutive crests
2. ✘ the distance between two consecutive troughs
3. ✘ the height difference between a crest and a trough
4. ✔ one-half the height difference between a crest and a trough.

Question Number : 77 Question Id : 377 Question Type : MCQ Option Shuffling : No

Correct : 1.0 Wrong : 0.33

An object and a screen are separated by 25 cm. When a convex lens is placed between them at a distance of 5 cm from the object, a sharp image is formed on the screen. The focal length of the lens is

Options :

1. ✘ 20 cm
2. ✘ 6.67 cm
3. ✔ 4.0 cm
4. ✘ 2.0 cm.

Question Number : 78 Question Id : 378 Question Type : MCQ Option Shuffling : No

Correct : 1.0 Wrong : 0.33

Two conducting wires A (resistance R_A) and B (resistance R_B) are made of same material and have the same length. If the diameter of wire B is twice that of wire A, the ratio R_A / R_B is

Options :

1. ✔ 4
2. ✘ 1/4
3. ✘ 1/2
4. ✘ 1.

Question Number : 79 Question Id : 379 Question Type : MCQ Option Shuffling : No

Correct : 1.0 Wrong : 0.33

For its complete combustion, one mole of an alkane required 3.5 mole of oxygen gas at the same temperature and pressure. What is the name of alkane?

Options :

1. ✘ Methane
2. ✔ Ethane
3. ✘ Propane
4. ✘ Butane

Question Number : 80 Question Id : 380 Question Type : MCQ Option Shuffling : No

Correct : 1.0 Wrong : 0.33

Which one of the following is a molecule of an element?

Options :

1. ✔ Cl_2

2. ✘ H₂S

3. ✘ NaCl

4. ✘ CO₂

Question Number : 81 Question Id : 381 Question Type : MCQ Option Shuffling : No

Correct : 1.0 Wrong : 0.33

Rancidity of oils and fats can be controlled by controlling the process of

Options :

1. ✘ Decomposition

2. ✘ Neutralization

3. ✘ Reduction

4. ✔ Oxidation

Question Number : 82 Question Id : 382 Question Type : MCQ Option Shuffling : No

Correct : 1.0 Wrong : 0.33

An element X contains only one electron in its outermost shell. Which of the following statements are correct about X ?

i) It forms an acidic oxide.

ii) It forms a basic oxide.

iii) It is a good conductor of electricity.

iv) It has a dull and non lustrous surface

Options :

1. ✘ (i) & (iii)

2. ✔ (ii) & (iii)

3. ✘ (i) & (iv)

4. ✘ (iii) & (iv)

Question Number : 83 Question Id : 383 Question Type : MCQ Option Shuffling : No

Correct : 1.0 Wrong : 0.33

Which one of the following can act as an olfactory indicator?

Options :

1. ✘ Phenolphthalein

2. ✘ Methyl orange

3. ✔ Vanilla essence

4. ✘ Litmus solution

Question Number : 84 Question Id : 384 Question Type : MCQ Option Shuffling : No

Correct : 1.0 Wrong : 0.33

Which one of the following elements is the most metallic in nature?

Options :

1. ✔ Na

2. ✘ Al

3. ✘ Li

4. ✘ B

Question Number : 85 Question Id : 385 Question Type : MCQ Option Shuffling : No

Correct : 1.0 Wrong : 0.33

Scientific names of living beings consist of

Options :

1. ✘ one word

2. ✔ two words

3. ✘ four words

4. ✘ more than four words

Question Number : 86 Question Id : 386 Question Type : MCQ Option Shuffling : No

Correct : 1.0 Wrong : 0.33

Human heart is made of cardiac muscle fibres because these are

Options :

1. ✘ striated and involuntary

2. ✔ involuntary and without fatigue

3. ✘ voluntary and do not stop contracting

4. ✘ voluntary and fibres are connected

Question Number : 87 Question Id : 387 Question Type : MCQ Option Shuffling : No

Correct : 1.0 Wrong : 0.33

Leaves of cacti are modified into spines to reduce transpiration. This is an adaptation to which feature of their habitat?

Options :

1. ✔ Scarcity of water

2. ✘ Lack of rainfall

3. ✘ Hot daytime

4. ✘ Cool nights

Question Number : 88 Question Id : 388 Question Type : MCQ Option Shuffling : No

Correct : 1.0 Wrong : 0.33

Which organ of the digestive system gets affected by the disease Jaundice/Hepatitis?

Options :

1. ✔ Liver

2. ✘ Pancreas

3. ✘ Stomach

4. ✘ Kidney

Question Number : 89 Question Id : 389 Question Type : MCQ Option Shuffling : No

Correct : 1.0 Wrong : 0.33

Which out of the following is **not** a Green House Gas?

Options :

1. ✘ Carbon Dioxide

2. ✔ Nitrogen

3. ✘ Sulphur Dioxide

4. ✘ Nitrous Oxide

Question Number : 90 Question Id : 390 Question Type : MCQ Option Shuffling : No

Correct : 1.0 Wrong : 0.33

In which one of the following is DNA present?

Options :

1. Genes
2. Ribosomes
3. Vacuoles
4. Golgi

Question Number : 91 Question Id : 391 Question Type : MCQ Option Shuffling : No

Correct : 1.0 Wrong : 0.33

The HCF of two numbers is 15 and their LCM is 270. If one number is 45, the other number is

Options :

1. 18
2. 90
3. 81
4. 675

Question Number : 92 Question Id : 392 Question Type : MCQ Option Shuffling : No

Correct : 1.0 Wrong : 0.33

The largest number which divides 247 and 319, leaving remainders 7 and 4 respectively is

Options :

1. 15
2. 30
3. 45
4. 56

Question Number : 93 Question Id : 393 Question Type : MCQ Option Shuffling : No

Correct : 1.0 Wrong : 0.33

If $a : b = 5 : 6$ and $b : c = 3 : 4$, then $c : a$ is

Options :

1. ✘ 4 : 5

2. ✘ 5 : 4

3. ✔ 8 : 5

4. ✘ 5 : 8

Question Number : 94 Question Id : 394 Question Type : MCQ Option Shuffling : No

Correct : 1.0 Wrong : 0.33

If 8, 12, 14, x are in proportion, then x is equal to

Options :

1. ✘ 18

2. ✘ 20

3. ✔ 21

4. ✘ 28

Question Number : 95 Question Id : 395 Question Type : MCQ Option Shuffling : No

Correct : 1.0 Wrong : 0.33

Successive discounts of 40% and 20% are equivalent to a single discount of

Options :

1. ✘ 60%

2. ✘ 55%

3. ✘ 54%

4. ✔ 52%

Question Number : 96 Question Id : 396 Question Type : MCQ Option Shuffling : No

Correct : 1.0 Wrong : 0.33

The simple interest on rupees 800 for $\frac{3}{2}$ years at 5% per annum is

Options :

1. ✔ ₹100

2. ✘ ₹ 125

3. ✘ ₹ 150

4. ✘ ₹ 200

Question Number : 97 Question Id : 397 Question Type : MCQ Option Shuffling : No

Correct : 1.0 Wrong : 0.33

The compound interest on rupees 12000 for 1 year at 10% per annum compounded half yearly is

Options :

1. ✘ ₹ 1200

2. ✔ ₹ 1230

3. ✘ ₹ 2520

4. ✘ ₹ 2680

Question Number : 98 Question Id : 398 Question Type : MCQ Option Shuffling : No

Correct : 1.0 Wrong : 0.33

If CP of 25 articles is equal to SP of 20 articles, then in the whole transaction there is a profit of

Options :

1. ✘ 10%

2. ✘ 20%

3. ✔ 25%

4. ✘ 30%

Question Number : 99 Question Id : 399 Question Type : MCQ Option Shuffling : No

Correct : 1.0 Wrong : 0.33

To gain 25% after allowing a discount of 10%, the shopkeeper should mark the price of the article which cost him ₹ 720 as

Options :

1. ✘ 10%

2. ✘ 20%

3. ✘ 25%

30%

4. ✓

Question Number : 100 Question Id : 400 Question Type : MCQ Option Shuffling : No

Correct : 1.0 Wrong : 0.33

A shopkeeper mixes 26 kg of rice which costs him ₹ 100 per kg with 30 kg of rice which costs him ₹ 180 per kg. He sells the mixed rice at ₹ 150 per kg.. The percentage gain is

Options :

1. ✗ 10%

2. ✗ $\frac{100}{21}$ %

3. ✗

3. ✗ 7 %

3. ✗

4. ✓ 5 %

Question Number : 101 Question Id : 401 Question Type : MCQ Option Shuffling : No

Correct : 1.0 Wrong : 0.33

In two vessels A and B, the spirit and water are in the ratio of 5 : 2 and 7 : 6 respectively. The ratio in which these are mixed to obtain new mixture which contains spirit and water in the ratio 3 : 2 is

Options :

1. ✗ 5 : 12

2. ✗ 3 : 2

2. ✗

3. ✓ 7 : 13

3. ✓

4. ✗ 35 : 12

4. ✗

Question Number : 102 Question Id : 402 Question Type : MCQ Option Shuffling : No

Correct : 1.0 Wrong : 0.33

The speed of a boat in still water is 15 km/hr. The speed of the stream is 3 km/hr. The time taken to go 12 km downstream in minutes is

Options :

1. ✓ 40

45

2. ✘

50

3. ✘

55

4. ✘

Question Number : 103 Question Id : 403 Question Type : MCQ Option Shuffling : No

Correct : 1.0 Wrong : 0.33

A train 200 m long is moving at 40 km/hr. The time in seconds, it will take to pass another train 150 long which is moving at 50 km/h in the opposite direction from the moment they meet is

Options :

8

1. ✘

12

2. ✘

14

3. ✔

117

4. ✘

Question Number : 104 Question Id : 404 Question Type : MCQ Option Shuffling : No

Correct : 1.0 Wrong : 0.33

A can do a piece of work in 15 days and B can do the same work in 10 days. If they work together, number of days required to complete the same work is

Options :

5

1. ✘

6

2. ✔

7

3. ✘

8

4. ✘

Question Number : 105 Question Id : 405 Question Type : MCQ Option Shuffling : No

Correct : 1.0 Wrong : 0.33

P and Q can do a piece of work in 10 days, Q and R in 12 days and R and P in 15 days. In how many days P alone can do the same work?

Options :

24

1. ✔

2. ✘ 40

3. ✘ 6

4. ✘ $\frac{40}{3}$

Question Number : 106 Question Id : 406 Question Type : MCQ Option Shuffling : No

Correct : 1.0 Wrong : 0.33

The average of first six even whole numbers is

Options :

1. ✔ 5

2. ✘ 6

3. ✘ 7

4. ✘ 8

Question Number : 107 Question Id : 407 Question Type : MCQ Option Shuffling : No

Correct : 1.0 Wrong : 0.33

The average marks of students of section A and B are respectively 60 and 70. The number of students in section A is 47 and in section B is 53. The average marks of both sections taken together are

Options :

1. ✘ 65.5

2. ✔ 65.3

3. ✘ 65.6

4. ✘ 65.8

Question Number : 108 Question Id : 408 Question Type : MCQ Option Shuffling : No

Correct : 1.0 Wrong : 0.33

The first term of an AP is -5 and third term is 17. Its seventh term is

Options :

1. ✘ 31

2. ✘ 41

3. ✓ 61

4. ✗ 71

Question Number : 109 Question Id : 409 Question Type : MCQ Option Shuffling : No
Correct : 1.0 Wrong : 0.33

The 12th term of the G.P 1, -3, 9, -27, ..., is

Options :

1. ✗ 3^{12}

2. ✗ -3^{12}

3. ✗ 3^{11}

4. ✓ -3^{11}

Question Number : 110 Question Id : 410 Question Type : MCQ Option Shuffling : No
Correct : 1.0 Wrong : 0.33

A ladder just reaches the top of a wall. The foot of the ladder is 8m away from the foot of the wall. The ladder makes an angle of 60° with the ground. The length of the ladder is

Options :

1. ✗ 4 m

2. ✓ 16 m

3. ✗ $\frac{16\sqrt{3}}{3}$ m

4. ✗ $16\sqrt{3}$ m

Question Number : 111 Question Id : 411 Question Type : MCQ Option Shuffling : No
Correct : 1.0 Wrong : 0.33

From a point on the bridge across a river the angle of depressions of the bank on the opposite side of the river are 60° and 45° respectively. If the bridge is at a height of 3m from the bank, the width of the river is

Options :

1. ✗ $2(\sqrt{3} + 1)$ m

2. ✘ $3(\sqrt{3} + 1) \text{ m}$

3. ✘ $3 - \sqrt{3} \text{ m}$

4. ✔ $3 + \sqrt{3} \text{ m}$

Question Number : 112 Question Id : 412 Question Type : MCQ Option Shuffling : No

Correct : 1.0 Wrong : 0.33

If $(x - 1)$ is a factor of $3x^3 - 2ax^2 - 3x + 6$, then a is equal to

Options :

1. ✔ 3

2. ✘ -3

3. ✘ +6

4. ✘ -6

Question Number : 113 Question Id : 413 Question Type : MCQ Option Shuffling : No

Correct : 1.0 Wrong : 0.33

One of the factors of $(81x^2 - 1) + (1 + 9x)^2$ is

Options :

1. ✔ $18x$

2. ✘ $9 + x$

3. ✘ $9 - x$

4. ✘ $9x - 1$

Question Number : 114 Question Id : 414 Question Type : MCQ Option Shuffling : No

Correct : 1.0 Wrong : 0.33

All values of k for which $x^2 - kx + 9 = 0$ has real roots is

Options :

1. ✘ $-6 \leq k \leq 6$

2. ✔ $6 \leq k \leq -6$

3. ✘ $k \geq 6$

4. ✘ $k \leq -6$

Question Number : 115 Question Id : 415 Question Type : MCQ Option Shuffling : No

Correct : 1.0 Wrong : 0.33

The sum and product of the roots of the equation $x^2 - 8x + 4 = 0$ are respectively

Options :

1. ✘ $-8, 4$

2. ✘ $8, -4$

3. ✔ $8, 4$

4. ✘ $-8, -4$

Question Number : 116 Question Id : 416 Question Type : MCQ Option Shuffling : No

Correct : 1.0 Wrong : 0.33

The football player has to leave the field if the referee shows him

Options :

1. ✘ Green card once

2. ✘ Yellow card once

3. ✘ Green card twice

4. ✔ Yellow card twice or Red card once

Question Number : 117 Question Id : 417 Question Type : MCQ Option Shuffling : No

Correct : 1.0 Wrong : 0.33

The first Indian to win an Olympic gold medal in an individual capacity was

Options :

1. ✔ Abhinav Bindra

2. ✘ Milkha Singh

3. ✘ PT Usha

4. ✘ Vijender Kumar

Question Number : 118 Question Id : 418 Question Type : MCQ Option Shuffling : No

Correct : 1.0 Wrong : 0.33

When you touch a hot plate and immediately withdraw your hand, the action is triggered by your

Options :

1. ✘ Brain
2. ✔ Spinal Cord
3. ✘ Upper arm muscles
4. ✘ bones of the hand

Question Number : 119 Question Id : 419 Question Type : MCQ Option Shuffling : No

Correct : 1.0 Wrong : 0.33

In a green house, paraffin is ignited to enhance photosynthesis in the plants as it provides

Options :

1. ✘ Water
2. ✔ Carbon-di-oxide
3. ✘ Oxygen
4. ✘ More light

Question Number : 120 Question Id : 420 Question Type : MCQ Option Shuffling : No

Correct : 1.0 Wrong : 0.33

Which of the following is not an insect?

Options :

1. ✔ Spider
2. ✘ Butterfly
3. ✘ Beetle
4. ✘ Termite

Question Number : 121 Question Id : 421 Question Type : MCQ Option Shuffling : No

Correct : 1.0 Wrong : 0.33

You can make soap at home from vegetable oil and

Options :

1. ✘ Caustic Potash
2. ✘ Ammonium Hydroxide
3. ✔ Caustic Soda
4. ✘ Sodium Chloride

Question Number : 122 Question Id : 422 Question Type : MCQ Option Shuffling : No

Correct : 1.0 Wrong : 0.33

Students were asked to present a “balanced equation” regarding Photosynthesis. Which is the correct equation?

Options :

1. ✘ $6\text{CO}_2 + \text{H}_2\text{O} \rightarrow \text{C}_6\text{H}_{12}\text{O}_6 + \text{O}_2$
2. ✔ $6\text{CO}_2 + 6\text{H}_2\text{O} \rightarrow \text{C}_6\text{H}_{12}\text{O}_6 + 6\text{O}_2$
3. ✘ $\text{CO}_2 + 6\text{H}_2\text{O} \rightarrow \text{C}_6\text{H}_{12}\text{O}_6 + \text{O}_2$
4. ✘ $\text{CO}_2 + \text{H}_2\text{O} \rightarrow \text{C}_6\text{H}_{12}\text{O}_6 + \text{O}_2$

Question Number : 123 Question Id : 423 Question Type : MCQ Option Shuffling : No

Correct : 1.0 Wrong : 0.33

Which out of the F, Br, Ca and Mg which are important elements because their salts are useful to humans may be grouped as halogens?

Options :

1. ✔ F and Br
2. ✘ F and Ca
3. ✘ Br and Mg
4. ✘ Ca and Br

Question Number : 124 Question Id : 424 Question Type : MCQ Option Shuffling : No

Correct : 1.0 Wrong : 0.33

A maximum of how many partners can a trading business firm have according to Indian Partnership Act?

Options :

1. ✓ 20

2. ✗ 15

3. ✗ 10

4. ✗ 5

Question Number : 125 Question Id : 425 Question Type : MCQ Option Shuffling : No

Correct : 1.0 Wrong : 0.33

We are able to walk on the ground because of

Options :

1. ✓ Friction

2. ✗ Gravitation

3. ✗ Rotation

4. ✗ Combination of gravity and Rotation

Question Number : 126 Question Id : 426 Question Type : MCQ Option Shuffling : No

Correct : 1.0 Wrong : 0.33

Scissors belong to the category of simple machines called levers. It is a first class lever because

Options :

1. ✓ Fulcrum (fixed point) is between load and effort

2. ✗ Load is between Fulcrum and effort

3. ✗ Effort is between fulcrum and load

4. ✗ It does not have a fulcrum

Question Number : 127 Question Id : 427 Question Type : MCQ Option Shuffling : No

Correct : 1.0 Wrong : 0.33

As I was folding my blanket of synthetic fibers, there were sparks due to generation of

Options :

1. ✓ Frictional electricity

2. ✗ Current electricity

3. ✗ Flow of electric field

Flow of potential

4. ✘

Question Number : 128 Question Id : 428 Question Type : MCQ Option Shuffling : No

Correct : 1.0 Wrong : 0.33

The latest country to give up its national currency and adopt “euro” as its currency is

Options :

1. ✔ Latvia

2. ✘ Lebanon

3. ✘ Brazil

4. ✘ Italy

Question Number : 129 Question Id : 429 Question Type : MCQ Option Shuffling : No

Correct : 1.0 Wrong : 0.33

Who presides over the present Lok Sabha when parliament session is on?

Options :

1. ✘ President, Pranab Mukherji

2. ✘ Vice President, Hamid Ansari

3. ✘ Prime Minister, Narendra Modi

4. ✔ Speaker, Sumitra Mahajan

Question Number : 130 Question Id : 430 Question Type : MCQ Option Shuffling : No

Correct : 1.0 Wrong : 0.33

BCMI project connects Bangladesh, China and India with

Options :

1. ✘ Manila

2. ✔ Myanmar

3. ✘ Malaysia

4. ✘ Morocco

Question Number : 131 Question Id : 431 Question Type : MCQ Option Shuffling : No

Correct : 1.0 Wrong : 0.33

One long river of our country which flows through the North-East is

Options :

1. ✘ Ganges
2. ✔ Brahmaputra
3. ✘ Narmada
4. ✘ Kaveri

Question Number : 132 Question Id : 432 Question Type : MCQ Option Shuffling : No
Correct : 1.0 Wrong : 0.33

The making of 'maps' is called

Options :

1. ✘ Calligraphy
2. ✘ Numismatics
3. ✔ Cartography
4. ✘ Philately

Question Number : 133 Question Id : 433 Question Type : MCQ Option Shuffling : No
Correct : 1.0 Wrong : 0.33

What is global warming and climate change due to?

Options :

1. ✔ Accumulation of Carbon dioxide in the atmosphere
2. ✘ Ozone hole
3. ✘ Photo chemical smog
4. ✘ UV rays of sunlight falling on earth

Question Number : 134 Question Id : 434 Question Type : MCQ Option Shuffling : No
Correct : 1.0 Wrong : 0.33

The Indian constitution was written on 26/11/1949 and came into force on

Options :

1. ✘ Same day
2. ✔ 26.01.1950
3. ✘ 15.08.1950
4. ✘ 26.01.1952

Question Number : 135 Question Id : 435 Question Type : MCQ Option Shuffling : No

Correct : 1.0 Wrong : 0.33

A few children between ages 8 and 14 were rescued from a factory where they worked under inhuman conditions. Which fundamental right of the constitution made this possible?

Options :

1. ✘ Right to Education
2. ✘ Right to Freedom of Speech
3. ✔ Right against exploitation
4. ✘ Right to Freedom of Religion

Question Number : 136 Question Id : 436 Question Type : MCQ Option Shuffling : No

Correct : 1.0 Wrong : 0.33

The relationship between quantity, revenue and price is

Options :

1. ✔ Quantity times Price = Revenue
2. ✘ Revenue times Price = Quantity
3. ✘ Quantity times Revenue = Price
4. ✘ Price times Quantity = Current price

Question Number : 137 Question Id : 437 Question Type : MCQ Option Shuffling : No

Correct : 1.0 Wrong : 0.33

Pablo Picasso's creation 'Guernica' was based on consequences of

Options :

1. ✔ Spanish civil war
2. ✘ Sudanese civil war
3. ✘ Second world war
4. ✘ American war of independence

Question Number : 138 Question Id : 438 Question Type : MCQ Option Shuffling : No

Correct : 1.0 Wrong : 0.33

Three national leaders were together called Lal Bal Pal. Which name in the options is wrong?

Options :

1. ✘ Bal Gangadhar Tilak
2. ✘ Bipin Chandra Pal
3. ✘ Lala Lajpat Rai
4. ✔ Lal Bahadur Shastri

Question Number : 139 Question Id : 439 Question Type : MCQ Option Shuffling : No

Correct : 1.0 Wrong : 0.33

Who was the last Governor General in the two century rule of the British in India?

Options :

1. ✘ Lord Clive
2. ✘ Sir Warren Hastings
3. ✔ Lord Mountbatten
4. ✘ Lord Cornwallis

Question Number : 140 Question Id : 440 Question Type : MCQ Option Shuffling : No

Correct : 1.0 Wrong : 0.33

Which of the following statements is not true?

Options :

1. ✘ Amartya Sen is the only economist from India/of Indian origin to have won the Nobel Prize for Economics
2. ✔ Amartya Sen is also credited with developing the input output method with C.V. Raman
3. ✘ Amartya Sen received the Nobel Prize in 1998 for his contribution to welfare economics
4. ✘ Amartya Sen is also known as a champion of nationalism, secularism

Question Number : 141 Question Id : 441 Question Type : MCQ Option Shuffling : No

Correct : 1.0 Wrong : 0.33

Pointing to a photograph Rohit said, "His father's brother is my brother's father."

How is Rohit related to the man in the photograph?

Options :

1. ✔ cousin

uncle

2. ✘

brother-in-law

3. ✘

brother

4. ✘

Question Number : 142 Question Id : 442 Question Type : MCQ Option Shuffling : No

Correct : 1.0 Wrong : 0.33

The first two numbers on the left of the sign '::' are related in a certain way. The same relationship holds for the second pair of numbers on the right side of the sign '::' of which one is missing. Find the missing one from the alternatives.

16 : 27 :: 36 : ?

Options :

1. ✘ 140

2. ✔ 125

3. ✘ 112

4. ✘ 84

Question Number : 143 Question Id : 443 Question Type : MCQ Option Shuffling : No

Correct : 1.0 Wrong : 0.33

The two words on the left side of the sign '::' are related in a certain way. The same relationship holds for the second pair of words on the right side of the sign '::' of which one is missing. Find the missing one from the alternatives.

Microphone : Loud :: Microscope : ?

Options :

1. ✘ Bacteria

2. ✘ Reflect

3. ✘ Examine

4. ✔ Magnify

Question Number : 144 Question Id : 444 Question Type : MCQ Option Shuffling : No

Correct : 1.0 Wrong : 0.33

Six friends A, B, C, D, E and F are sitting in a row. A is not sitting next to C or D. There are two persons between D and F. D is next to B, who is in one of the extremes. Who is sitting in the other extreme?

Options :

1. ✘ A

2. ✓ C

3. ✗ E

4. ✗ F

Question Number : 145 Question Id : 445 Question Type : MCQ Option Shuffling : No

Correct : 1.0 Wrong : 0.33

Arrange the following words in a meaningful logical sequence and choose the appropriate number sequence from the alternatives.

1. Medicine 2. Injury 3. Doctor 4. Accident 5. Cure 6. Hospital

Options :

1. ✓ 4, 2, 3, 6, 1, 5

2. ✗ 5, 6, 3, 1, 2, 4

3. ✗ 4, 2, 6, 1, 3, 5

4. ✗ 4, 2, 6, 3, 1, 5

For the above question, User had specified 'ignore' during keys upload.

Question Number : 146 Question Id : 446 Question Type : MCQ Option Shuffling : No

Correct : 1.0 Wrong : 0.33

The numbers in each group are related in a certain way. Choose the correct number from among the alternatives that will replace the question mark.

(3 [34] 5)

(4 [65] 7)

(6 [?] 9)

Options :

1. ✗ 85

2. ✗ 107

3. ✓ 117

4. ✗ 128

Question Number : 147 Question Id : 447 Question Type : MCQ Option Shuffling : No

Correct : 1.0 Wrong : 0.33

In a certain language, '296' means 'adults are educated'; '7825' means 'rich persons are nice'; and '9257' means 'educated persons are rich'. Which digit means 'educated' in that language?

Options :

1. ✓ 9

2. ✗ 6

3. ✗ 8

4. ✘ 7

Question Number : 148 Question Id : 448 Question Type : MCQ Option Shuffling : No

Correct : 1.0 Wrong : 0.33

If 'METHOD' is coded as 'LFRJLG', then 'GROUND' will be coded as:

Options :

1. ✘ FSMWLG

2. ✔ FSMWKG

3. ✘ ESMWKG

4. ✘ FSNWKG

Question Number : 149 Question Id : 449 Question Type : MCQ Option Shuffling : No

Correct : 1.0 Wrong : 0.33

Harsh's school bus picks him up from his home. Then it takes one left turn and two right turns to reach his school. If the bus is facing North-West when it reaches the school, which direction was the bus facing at Harsh's home?

Options :

1. ✔ South-West

2. ✘ South-East

3. ✘ North-East

4. ✘ South

Question Number : 150 Question Id : 450 Question Type : MCQ Option Shuffling : No

Correct : 1.0 Wrong : 0.33

The numbers in the matrix given below follow a certain trend row-wise and and/or column wise. Study the trend and choose the number which will replace the question mark?

9	11	21
24	29	?
6	7	14

Options :

1. ✘ 43

2. ✘ 53

3. ✔ 56

